

UK Office

Everest Biotech Ltd

Cherwell Innovation Centre
77 Heyford Park
Upper Heyford
Oxfordshire
OX25 5HD
UK

Enquiries:

info@everestbiotech.com

Sales:

sales@everestbiotech.com

Tech support:

support@everestbiotech.com

Tel: +44 (0)1869 238326

www.everestbiotech.com

**Research Use Only. Not for
diagnostic or therapeutic use.**

EB07882 - Goat Anti-IL17ra (mouse) Antibody

Size: 100µg specific antibody in 200µl



Target Protein

Principal Names: interleukin 17 receptor A, AW538159, Cdw217, IL17r, VDw217, interleukin 17 receptor

Official Symbol: IL17RA

Accession Number(s): NP_032385.1

Non-Human GeneID(s): 16172 (mouse), 312679 (rat)

Immunogen

Peptide with sequence C-DQEKHGDDSKIN, from the internal region of the protein sequence according to NP_032385.1.

Please note the [peptide](#) is available for sale.

Purification and Storage

Purified from goat serum by ammonium sulphate precipitation followed by antigen affinity chromatography using the immunizing peptide.

Supplied at 0.5 mg/ml in Tris saline, 0.02% sodium azide, pH7.3 with 0.5% bovine serum albumin.

Aliquot and store at -20°C. Minimize freezing and thawing.

Applications Tested

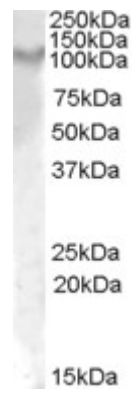
Peptide ELISA: antibody detection limit dilution 1:8000.

Western blot: Approx 110kDa band observed in Rat Kidney lysates (calculated MW of 96.1kDa according to Mouse NP_032385.1 and of 97.9kDa according to Rat NP_001101353.2). Recommended concentration: 1-3µg/ml.

Species Reactivity

Tested: Rat

Expected from sequence similarity: Mouse, Rat



EB7882 (1µg/ml) staining of Rat Kidney lysate (35µg protein in RIPA buffer). Primary incubation was 1 hour.
Detected by chemiluminescence.