

UK Office

Everest Biotech Ltd

Cherwell Innovation Centre
77 Heyford Park
Upper Heyford
Oxfordshire
OX25 5HD
UK

Enquiries:

info@everestbiotech.com

Sales:

sales@everestbiotech.com

Tech support:

support@everestbiotech.com

Tel: +44 (0)1869 238326

www.everestbiotech.com

**Research Use Only. Not for
diagnostic or therapeutic use.**

EB10998 - Goat Anti-IDH3B (aa33-46) Antibody

Size: 100µg specific antibody in 200µl



Target Protein

Principal Names: IDH3B, isocitrate dehydrogenase 3 (NAD+) beta, FLJ11043, H-IDHB, MGC903, RP46, NAD(+)-specific ICDH subunit beta, NAD+-specific ICDH, NAD+-specific isocitrate dehydrogenase b subunit, NAD+-specific isocitrate dehydrogenase beta, isocitrate dehydrogenase [NAD] subunit beta, mitochondrial, isocitrate dehydrogenase, NAD(+)-specific, mitochondrial, beta subunit, isocitric dehydrogenase subunit beta

Official Symbol: IDH3B

Accession Number(s): NP_008830.2; NP_777280.1

Human GeneID(s): [3420](#)

Non-Human GeneID(s): 170718 (mouse), 94173 (rat)

Important Comments: This antibody is expected to recognize isoform a (NP_008830.2) and isoform b (NP_777280.1).

Immunogen

Peptide with sequence C-HAASRSQAEDVRVE, from the internal region (near N Terminus) of the protein sequence according to NP_008830.2; NP_777280.1.

Please note the [peptide](#) is available for sale.

Purification and Storage

Purified from goat serum by ammonium sulphate precipitation followed by antigen affinity chromatography using the immunizing peptide.

Supplied at 0.5 mg/ml in Tris saline, 0.02% sodium azide, pH7.3 with 0.5% bovine serum albumin.

Aliquot and store at -20°C. Minimize freezing and thawing.

Applications Tested

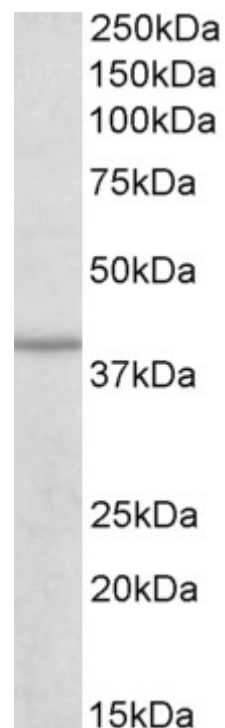
Peptide ELISA: antibody detection limit dilution 1:1000.

Western blot: Approx 39kDa band observed in Mouse, Rat and Pig Heart lysates and in Human and Mouse Skeletal Muscle lysates (calculated MW of 41.9kDa according to NP_777280.1). Recommended concentration: 0.3-1µg/ml.

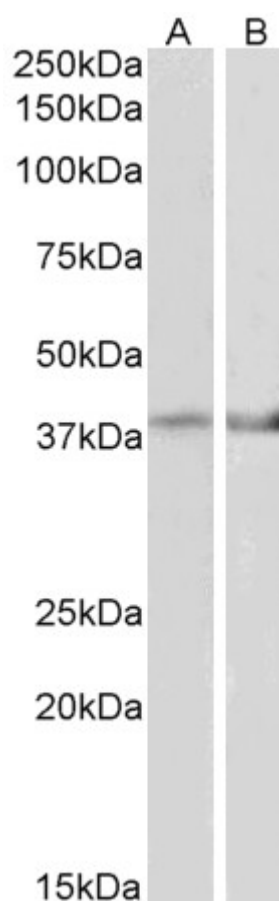
Species Reactivity

Tested: Human, Mouse, Rat, Pig

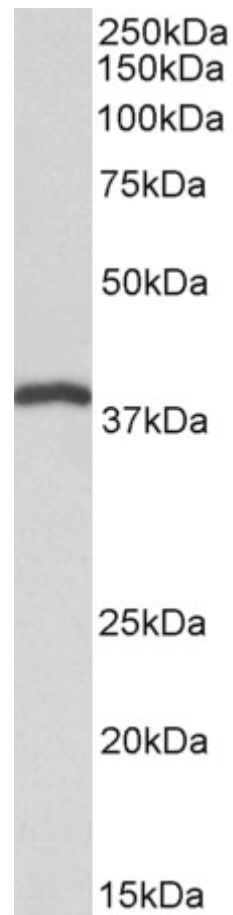
Expected from sequence similarity: Human, Mouse, Rat, Dog, Pig,



EB10998 (0.3 μ g/ml) staining of Human Skeletal muscle lysate (35 μ g protein in RIPA buffer). Primary incubation was 1 hour. Detected by chemiluminescence.



EB10998 (2 μ g/ml) staining of Mouse Heart (A) and Mouse Muscle (B) lysate (35 μ g protein in RIPA buffer). Primary incubation was 1 hour. Detected by chemiluminescence.



EB10998 (0.1 μ g/ml) staining of Pig Heart lysate (35 μ g protein in RIPA buffer). Primary incubation was 1 hour.
Detected by chemiluminescence.