

## UK Office

### Everest Biotech Ltd

Cherwell Innovation Centre  
77 Heyford Park  
Upper Heyford  
Oxfordshire  
OX25 5HD  
UK

Enquiries:

[info@everestbiotech.com](mailto:info@everestbiotech.com)

Sales:

[sales@everestbiotech.com](mailto:sales@everestbiotech.com)

Tech support:

[support@everestbiotech.com](mailto:support@everestbiotech.com)

Tel: +44 (0)1869 238326

[www.everestbiotech.com](http://www.everestbiotech.com)

**Research Use Only. Not for  
diagnostic or therapeutic use.**

## EB10531 - Goat Anti-IDH1 (aa153-164) Antibody

Size: 100µg specific antibody in 200µl



### Target Protein

**Principal Names:** IDCD, IDH, IDP, IDPC, isocitrate dehydrogenase 1 (NADP+), soluble, NADP+-specific ICDH, NADP-dependent isocitrate dehydrogenase, cytosolic, NADP-dependent isocitrate dehydrogenase, peroxisomal, OTTHUMP00, OTTHUMP00000206464, OTTHUMP00000206465, PICD, IDH1

**Official Symbol:** IDH1

**Accession Number(s):** NP\_005887.2

**Human GeneID(s):** [3417](#)

**Non-Human GeneID(s):** 15926 (mouse), 24479 (rat)

### Immunogen

Peptide with sequence C-EITYTPSDGTQK, from the internal region of the protein sequence according to NP\_005887.2.

Please note the [peptide](#) is available for sale.

### Purification and Storage

Purified from goat serum by ammonium sulphate precipitation followed by antigen affinity chromatography using the immunizing peptide.

Supplied at 0.5 mg/ml in Tris saline, 0.02% sodium azide, pH7.3 with 0.5% bovine serum albumin.

Aliquot and store at -20°C. Minimize freezing and thawing.

### Applications Tested

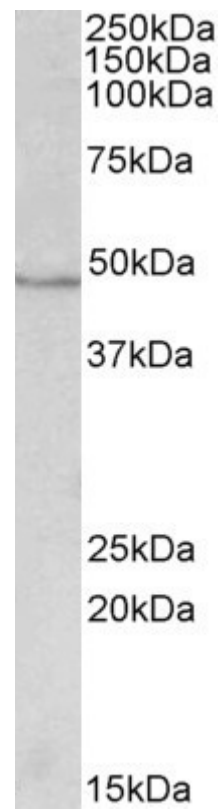
**Peptide ELISA:** antibody detection limit dilution 1:1000.

**Western blot:** Approx 48kDa band observed in lysates of cell line HepG2 and of Mouse Liver (calculated MW of 46.7kDa according to NP\_005887.2). Recommended concentration: 0.3-1µg/ml.

### Species Reactivity

**Tested:** Human, Mouse

**Expected from sequence similarity:** Human, Mouse, Rat, Dog



EB10531 (0.3µg/ml) staining of HepG2 lysate (35µg protein in RIPA buffer). Primary incubation was 1 hour.  
Detected by chemiluminescence.