

UK Office

Everest Biotech Ltd

Cherwell Innovation Centre
77 Heyford Park
Upper Heyford
Oxfordshire
OX25 5HD
UK

Enquiries:

info@everestbiotech.com

Sales:

sales@everestbiotech.com

Tech support:

support@everestbiotech.com

Tel: +44 (0)1869 238326

www.everestbiotech.com

**Research Use Only. Not for
diagnostic or therapeutic use.**

EB11900 - Goat Anti-ICAM4 (aa169-182) Antibody

Size: 100µg specific antibody in 200µl



Target Protein

Principal Names: β -character-test, ICAM4, intercellular adhesion molecule 4 (Landsteiner-Wiener blood group), CD242, LW, CD242 antigen, LW blood group protein, Landsteiner-Wiener blood group antigen a, Landsteiner-Wiener blood group glycoprotein, intercellular adhesion molecule 4, intercellular adhesion molecule 4 (LW blood group)

Official Symbol: ICAM4

Accession Number(s): NP_001535.1; NP_071772.1

Human GeneID(s): [3386](#)

Important Comments: This antibody is expected to recognize isoform 1 (NP_001535.1) and isoform 2 (NP_071772.1) only.

Immunogen

Peptide with sequence C-RHGSRVIYSESLER, from the internal region of the protein sequence according to NP_001535.1; NP_071772.1.

Please note the [peptide](#) is available for sale.

Purification and Storage

Purified from goat serum by ammonium sulphate precipitation followed by antigen affinity chromatography using the immunizing peptide.

Supplied at 0.5 mg/ml in Tris saline, 0.02% sodium azide, pH7.3 with 0.5% bovine serum albumin.

Aliquot and store at -20°C. Minimize freezing and thawing.

Applications Tested

Peptide ELISA: antibody detection limit dilution 1:64000.

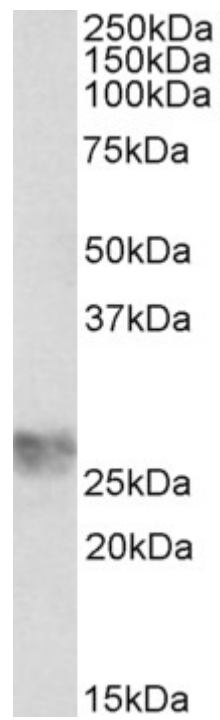
Western blot: Approx 28kDa band observed in Human Umbilical Cord and in Erythrocytes lysates (calculated MW of 29.3kDa according to NP_001535.1).

Recommended concentration: 1-3µg/ml.

Species Reactivity

Tested: Human

Expected from sequence similarity: Human



EB11900 (1 μ g/ml) staining of Human Umbilical Cord lysate (35 μ g protein in RIPA buffer). Primary incubation was 1 hour. Detected by chemiluminescence.