

UK Office

Everest Biotech Ltd

Cherwell Innovation Centre
77 Heyford Park
Upper Heyford
Oxfordshire
OX25 5HD
UK

Enquiries:

info@everestbiotech.com

Sales:

sales@everestbiotech.com

Tech support:

support@everestbiotech.com

Tel: +44 (0)1869 238326

www.everestbiotech.com

**Research Use Only. Not for
diagnostic or therapeutic use.**

EB06359 - Goat Anti-IBP / DEF6 Antibody

Size: 100µg specific antibody in 200µl



Target Protein

Principal Names: DEF6, IBP, differentially expressed in FDCP 6 homolog, RP3-329A5.5, SLAT, IRF4-binding protein, OTTHUMP00000016251, differentially expressed in FDCP 6 homolog (mouse), SWAP70L, SWAP-70-like adaptor protein of T cells

Official Symbol: DEF6

Accession Number(s): NP_071330.3

Human GeneID(s): [50619](#)

Non-Human GeneID(s): 23853 (mouse)

Immunogen

Peptide with sequence ALRKELLKSIWYA-C, from the N Terminus of the protein sequence according to NP_071330.3.

Please note the [peptide](#) is available for sale.

Purification and Storage

Purified from goat serum by ammonium sulphate precipitation followed by antigen affinity chromatography using the immunizing peptide.

Supplied at 0.5 mg/ml in Tris saline, 0.02% sodium azide, pH7.3 with 0.5% bovine serum albumin.

Aliquot and store at -20°C. Minimize freezing and thawing.

Applications Tested

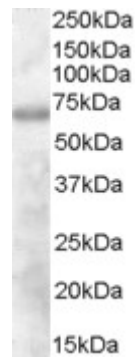
Peptide ELISA: antibody detection limit dilution 1:2000.

Western blot: Approx. 70kDa band observed in Human Thymus lysates (calculated MW of 73.9kDa according to NP_071330.3). Recommended concentration: 1-3µg/ml.

Species Reactivity

Tested: Human

Expected from sequence similarity: Human, Mouse, Rat, Dog, Pig, Cow



EB06359 (1 μ g/ml) staining of Human Thymus lysate (35 μ g protein in RIPA buffer). Primary incubation was 1 hour. Detected by chemiluminescence.