

## UK Office

### Everest Biotech Ltd

Cherwell Innovation Centre  
77 Heyford Park  
Upper Heyford  
Oxfordshire  
OX25 5HD  
UK

Enquiries:

[info@everestbiotech.com](mailto:info@everestbiotech.com)

Sales:

[sales@everestbiotech.com](mailto:sales@everestbiotech.com)

Tech support:

[support@everestbiotech.com](mailto:support@everestbiotech.com)

Tel: +44 (0)1869 238326

[www.everestbiotech.com](http://www.everestbiotech.com)

**Research Use Only. Not for  
diagnostic or therapeutic use.**

## EB09347 - Goat Anti-HTR7 / 5-HT7 Antibody

Size: 100µg specific antibody in 200µl



### Target Protein

**Principal Names:** HTR7, 5-hydroxytryptamine (serotonin) receptor 7 (adenylate cyclase-coupled), 5-HT7, 5-hydroxytryptamine receptor 7, OTTHUMP00000020077, OTTHUMP00000020078, OTTHUMP00000020079, serotonin 5-HT-7 receptor

**Official Symbol:** HTR7

**Accession Number(s):** NP\_000863.1

**Human GeneID(s):** [3363](#)

**Important Comments:** This antibody is expected to recognize isoform a (NP\_000863.1) only.

### Immunogen

Peptide with sequence QNADYCRKKGHDS, from the C Terminus of the protein sequence according to NP\_000863.1.

Please note the [peptide](#) is available for sale.

### Purification and Storage

Purified from goat serum by ammonium sulphate precipitation followed by antigen affinity chromatography using the immunizing peptide.

Supplied at 0.5 mg/ml in Tris saline, 0.02% sodium azide, pH7.3 with 0.5% bovine serum albumin.

Aliquot and store at -20°C. Minimize freezing and thawing.

### Applications Tested

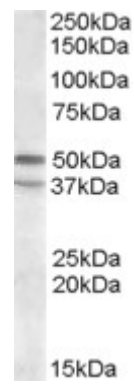
**Peptide ELISA:** antibody detection limit dilution 1:16000.

**Western blot:** Approx 50kDa band observed in lysates of cell line KELLY (calculated MW of 49.5kDa according to NP\_000863.1). Recommended concentration: 1-3µg/ml. An additional band of unknown identity was also consistently observed at 37kDa. This band was successfully blocked by incubation with the immunizing peptide. We would appreciate any feedback from people in the field - have any such results been reported with other antibodies/lysates? Have any further splice variants/modified forms been reported?

### Species Reactivity

**Tested:** Human

**Expected from sequence similarity:** Human



EB09347 (1µg/ml) staining of KELLY lysate (35µg protein in RIPA buffer). Primary incubation was 1 hour.  
Detected by chemiluminescence.