



## UK Office

### Everest Biotech Ltd

Cherwell Innovation Centre  
77 Heyford Park  
Upper Heyford  
Oxfordshire  
OX25 5HD  
UK

Enquiries:

[info@everestbiotech.com](mailto:info@everestbiotech.com)

Sales:

[sales@everestbiotech.com](mailto:sales@everestbiotech.com)

Tech support:

[support@everestbiotech.com](mailto:support@everestbiotech.com)

Tel: +44 (0)1869 238326

[www.everestbiotech.com](http://www.everestbiotech.com)

**Research Use Only. Not for  
diagnostic or therapeutic use.**

## EB08884 - Goat Anti-HOXD10 Antibody

Size: 100µg specific antibody in 200µl



### Target Protein

**Principal Names:** HOXD10, homeobox D10, HOX4, HOX4D, HOX4E, Hox-4.4, homeobox 4D, homeobox D10

**Official Symbol:** HOXD10

**Accession Number(s):** NP\_002139.2

**Human GeneID(s):** [3236](#)

**Non-Human GeneID(s):** 15430 (mouse), 303991 (rat)

### Immunogen

Peptide with sequence PNRSCRIEQPVTQQ, from the internal region of the protein sequence according to NP\_002139.2.

Please note the [peptide](#) is available for sale.

### Purification and Storage

Purified from goat serum by ammonium sulphate precipitation followed by antigen affinity chromatography using the immunizing peptide.

Supplied at 0.5 mg/ml in Tris saline, 0.02% sodium azide, pH7.3 with 0.5% bovine serum albumin.

Aliquot and store at -20°C. Minimize freezing and thawing.

### Applications Tested

**Peptide ELISA:** antibody detection limit dilution 1:32000.

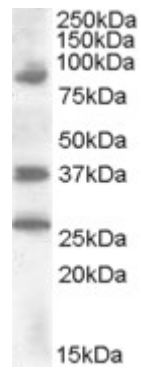
**Western blot:** Approx. 37 kDa band observed in Human Kidney lysates (calculated MW of 38.4 kDa according to NP\_002139.2). Recommended concentration: 0.2-0.6µg/ml. Additional bands of unknown identity were also consistently observed at 90+26 kDa. These bands were successfully blocked by incubation with the immunising peptide. We would appreciate any feedback from people in the field - have any such results been reported with other antibodies/lysates? Have any further splice variants/modified forms been reported?

**IHC:** In paraffin embedded Human Kidney shows nuclear staining in some epithelial cells of PCT. Recommended concentration, 3-5µg/ml.

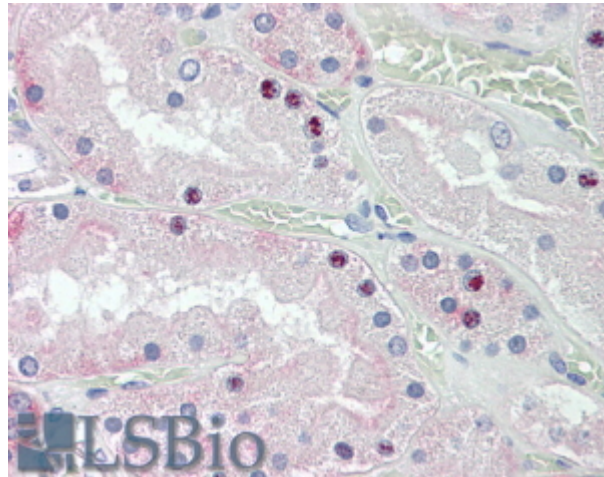
### Species Reactivity

**Tested:** Human

**Expected from sequence similarity:** Human, Mouse, Rat, Horse, Cow



EB08884 (0.2 $\mu$ g/ml) staining of Human Kidney lysate (35 $\mu$ g protein in RIPA buffer). Primary incubation was 1 hour. Detected by chemiluminescence.



EB08884 (3.8 $\mu$ g/ml) staining of paraffin embedded Human Kidney. Steamed antigen retrieval with citrate buffer pH 6, AP-staining.