



## UK Office

### Everest Biotech Ltd

Cherwell Innovation Centre  
77 Heyford Park  
Upper Heyford  
Oxfordshire  
OX25 5HD  
UK

Enquiries:

[info@everestbiotech.com](mailto:info@everestbiotech.com)

Sales:

[sales@everestbiotech.com](mailto:sales@everestbiotech.com)

Tech support:

[support@everestbiotech.com](mailto:support@everestbiotech.com)

Tel: +44 (0)1869 238326

[www.everestbiotech.com](http://www.everestbiotech.com)

**Research Use Only. Not for  
diagnostic or therapeutic use.**

## EB12204-B - Goat Anti-HOXA10, Biotinylated Antibody

Size: 100µg specific antibody in 200µl



### Target Protein

**Principal Names:** HOXA10, homeobox A10, HOX1, HOX1.8, HOX1H, PL, homeo box A10, homeobox protein 1H, homeobox protein HOXA10, homeobox protein Hox-1.8, homeobox protein Hox-1H

**Official Symbol:** HOXA10

**Accession Number(s):** NP\_061824.3

**Human GeneID(s):** [3206](#)

### Immunogen

Peptide with sequence PQATSCSFAQNIKE., from the internal region of the protein sequence according to NP\_061824.3.

Please note the [peptide](#) is available for sale.

### Purification and Storage

Purified from goat serum by ammonium sulphate precipitation followed by antigen affinity chromatography using the immunizing peptide.

Supplied at 0.5 mg/ml in Tris saline, 0.02% sodium azide, pH7.3 with 0.5% bovine serum albumin.

Aliquot and store at -20°C. Minimize freezing and thawing.

### Applications Tested

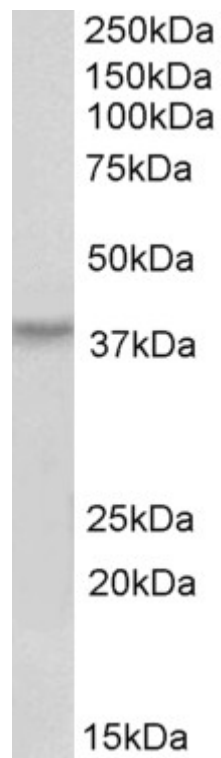
**Peptide ELISA:** antibody detection limit dilution 1:32000.

**Western blot:** Approx 38kDa band observed in Human Skeletal Muscle lysates (calculated MW of 42.4kDa according to NP\_061824.3. Recommended concentration: 0.2-0.6µg/ml.

### Species Reactivity

**Tested:** Human

**Expected from sequence similarity:** Human, Mouse, Pig, Cow



Biotinylated EB12204 (0.2µg/ml) staining of Human Skeletal Muscle lysate (35µg protein in RIPA buffer). Primary incubation was 1 hour. Detected by chemiluminescence.