

UK Office

Everest Biotech Ltd

Cherwell Innovation Centre
77 Heyford Park
Upper Heyford
Oxfordshire
OX25 5HD
UK

Enquiries:

info@everestbiotech.com

Sales:

sales@everestbiotech.com

Tech support:

support@everestbiotech.com

Tel: +44 (0)1869 238326

www.everestbiotech.com

**Research Use Only. Not for
diagnostic or therapeutic use.**

EB09292 - Goat Anti-HIPPI Antibody

Size: 100µg specific antibody in 200µl



Target Protein

Principal Names: IFT57, intraflagellar transport 57 homolog (Chlamydomonas), ESRRBL1, FLJ10147, HIPPI, MHS4R2, HIP1 protein interactor, estrogen-related receptor beta like 1, huntingtin interacting protein-1 interacting protein

Official Symbol: IFT57

Accession Number(s): NP_060480.1

Human GeneID(s): [55081](#)

Non-Human GeneID(s): 73916 (mouse), 303968 (rat)

Immunogen

Peptide with sequence C-EQPQEYDDPNATISN , from the internal region of the protein sequence according to NP_060480.1.

Please note the [peptide](#) is available for sale.

Purification and Storage

Purified from goat serum by ammonium sulphate precipitation followed by antigen affinity chromatography using the immunizing peptide.

Supplied at 0.5 mg/ml in Tris saline, 0.02% sodium azide, pH7.3 with 0.5% bovine serum albumin.

Aliquot and store at -20°C. Minimize freezing and thawing.

Applications Tested

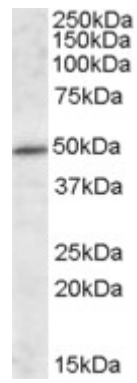
Peptide ELISA: antibody detection limit dilution 1:8000.

Western blot: Approx 49kDa band observed in Human and Mouse Brain lysates (calculated MW of 49.1kDa according to Human NP_060480.1 and of 48.8kDa according to Mouse NP_082956.2). Recommended concentration: 1-3µg/ml.

Species Reactivity

Tested: Human, Mouse

Expected from sequence similarity: Human, Mouse, Rat, Cow



EB09292 (1µg/ml) staining of Mouse Brain lysate (35µg protein in RIPA buffer). Primary incubation was 1 hour.
Detected by chemiluminescence.