

UK Office

Everest Biotech Ltd

Cherwell Innovation Centre
77 Heyford Park
Upper Heyford
Oxfordshire
OX25 5HD
UK

Enquiries:

info@everestbiotech.com

Sales:

sales@everestbiotech.com

Tech support:

support@everestbiotech.com

Tel: +44 (0)1869 238326

www.everestbiotech.com

**Research Use Only. Not for
diagnostic or therapeutic use.**

EB07528 - Goat Anti-HAP1 Antibody

Size: 100µg specific antibody in 200µl



Target Protein

Principal Names: HAP1, huntingtin-associated protein 1 (neuroan 1), HAP2, HIP5, HLP, hHLP1, huntingtin-associated protein 1, huntingtin-associated protein 2, neuroan 1

Official Symbol: HAP1

Accession Number(s): NP_003940.2; NP_817084.1

Human GeneID(s): [9001](#)

Important Comments: This antibody is expected to recognize all reported isoforms (NP_003940.1, NP_817084.1)

Immunogen

Peptide with sequence C-RYDFRYSEDREQ, from the internal region of the protein sequence according to NP_003940.2; NP_817084.1.

Please note the [peptide](#) is available for sale.

Purification and Storage

Purified from goat serum by ammonium sulphate precipitation followed by antigen affinity chromatography using the immunizing peptide.

Supplied at 0.5 mg/ml in Tris saline, 0.02% sodium azide, pH7.3 with 0.5% bovine serum albumin.

Aliquot and store at -20°C. Minimize freezing and thawing.

Applications Tested

Peptide ELISA: antibody detection limit dilution 1:32000.

Western blot: Approx 70kDa band observed in Human Brain (Frontal Cortex and Hippocampus) lysates (calculated MW of 69.6kDa according to NP_817084.1).

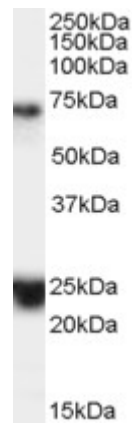
Recommended concentration: 0.1-0.3µg/ml. Primary incubation was 1 hour. An additional band of unknown identity was also consistently observed at 25kDa. This band was successfully blocked by incubation with the immunising peptide.

IHC: Paraffin embedded Human Brain (Cortex). Recommended concentration: 3.75µg/ml.

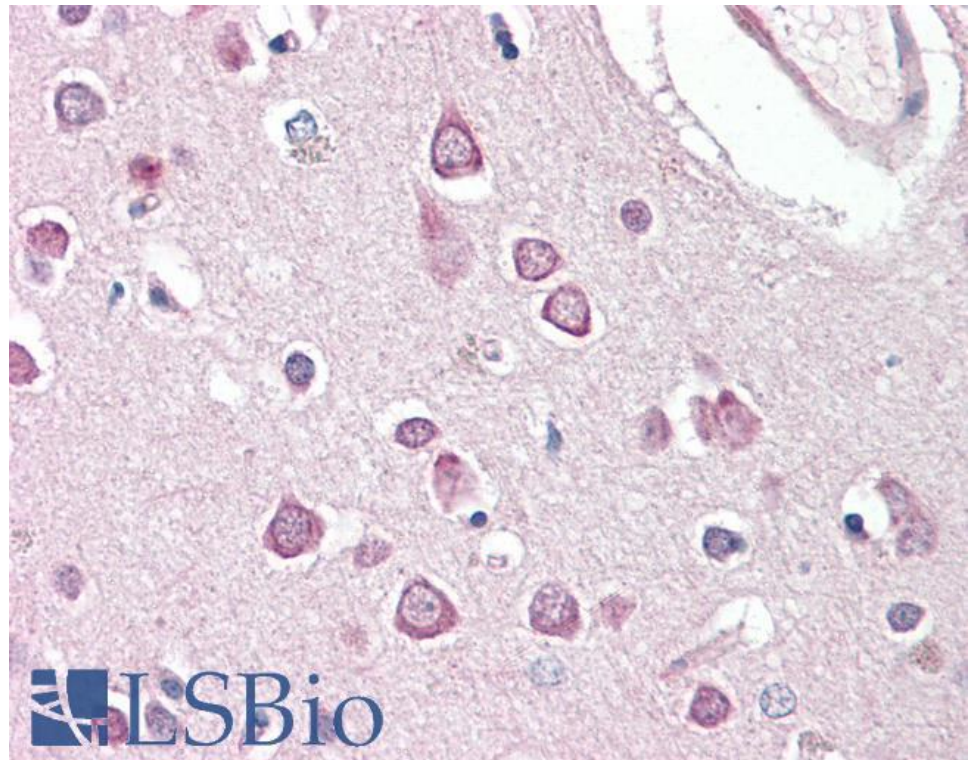
Species Reactivity

Tested: Human

Expected from sequence similarity: Human



EB07528 (0.1 μ g/ml) staining of Human Brain (Hippocampus) lysate (35 μ g protein in RIPA buffer). Detected by chemiluminescence.



EB07528 (3.75 μ g/ml) staining of paraffin embedded Human Cortex. Steamed antigen retrieval with citrate buffer pH 6, AP-staining.