

UK Office

Everest Biotech Ltd

Cherwell Innovation Centre
77 Heyford Park
Upper Heyford
Oxfordshire
OX25 5HD
UK

Enquiries:

info@everestbiotech.com

Sales:

sales@everestbiotech.com

Tech support:

support@everestbiotech.com

Tel: +44 (0)1869 238326

www.everestbiotech.com

**Research Use Only. Not for
diagnostic or therapeutic use.**

EB06802 - Goat Anti-GST3 / GSTP1 Antibody

Size: 100µg specific antibody in 200µl



Target Protein

Principal Names: GSTP1, GST3, glutathione S-transferase pi, HGNC:4638, DFN7, FAEES3, PI, deafness, X-linked 7, fatty acid ethyl ester synthase III, glutathione transferase, glutathione S-transferase pi 1

Official Symbol: GSTP1

Accession Number(s): NP_000843.1

Human GeneID(s): [2950](#)

Immunogen

Peptide with sequence C-LADQGQSWKEEV, from the internal region of the protein sequence according to NP_000843.1.

Please note the [peptide](#) is available for sale.

Purification and Storage

Purified from goat serum by ammonium sulphate precipitation followed by antigen affinity chromatography using the immunizing peptide.

Supplied at 0.5 mg/ml in Tris saline, 0.02% sodium azide, pH7.3 with 0.5% bovine serum albumin.

Aliquot and store at -20°C. Minimize freezing and thawing.

Applications Tested

Peptide ELISA: antibody detection limit dilution 1:32000.

Western blot: Approx 24kDa band observed in Human Kidney, Liver and Lung lysates (calculated MW of 23.4kDa according to NP_000843.1). In transfected HEK293 transiently expressing GSTP1 band of approx. 26 kDa is observed. This band is not observed in the non-transfected HEK293. Recommended concentration: 0.01-0.03µg/ml.

IHC: Paraffin embedded Human Prostate. Recommended concentration: 5µg/ml.

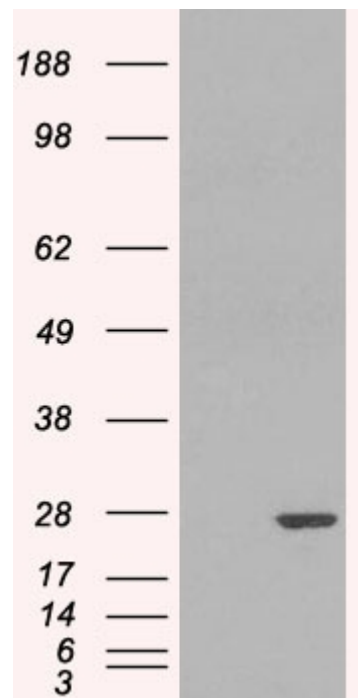
Species Reactivity

Tested: Human

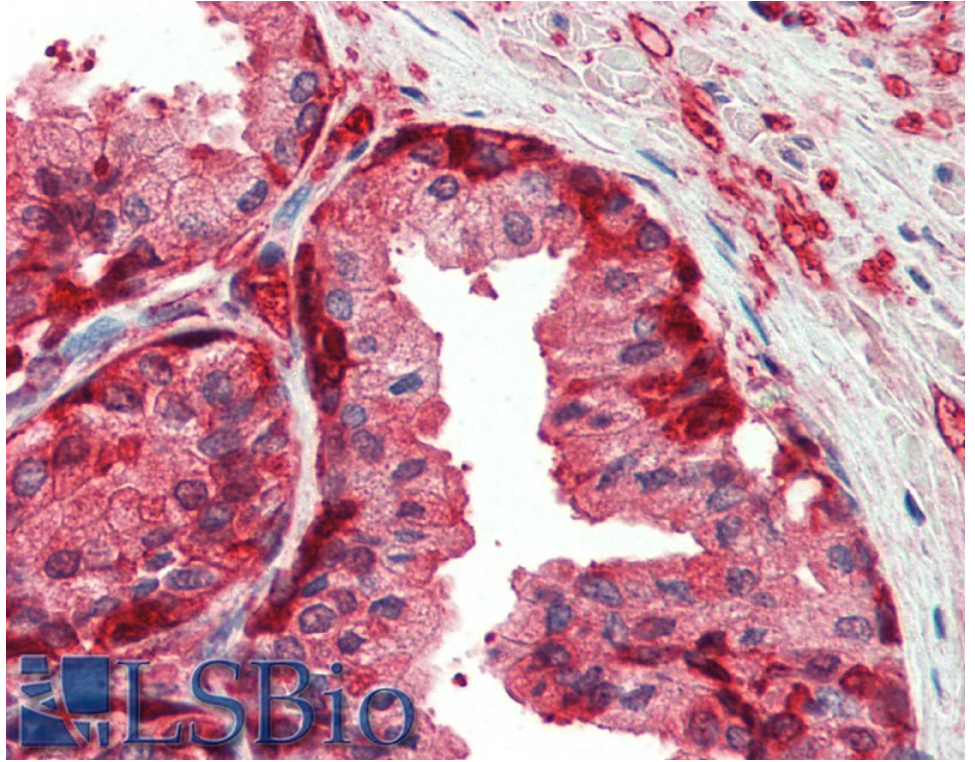
Expected from sequence similarity: Human, Mouse, Rat, Dog, Cow



EB06802 (0.01µg/ml) staining of Human Kidney lysate (35µg protein in RIPA buffer). Primary incubation was 1 hour. Detected by chemiluminescence.



HEK293 overexpressing GSTP1 (RC203086) and probed with EB06802 (mock transfection in first lane), tested by Origene.



EB06802 (5µg/ml) staining of paraffin embedded Human Prostate. Steamed antigen retrieval with citrate buffer pH 6, AP-staining.