

UK Office

Everest Biotech Ltd

Cherwell Innovation Centre
77 Heyford Park
Upper Heyford
Oxfordshire
OX25 5HD
UK

Enquiries:

info@everestbiotech.com

Sales:

sales@everestbiotech.com

Tech support:

support@everestbiotech.com

Tel: +44 (0)1869 238326

www.everestbiotech.com

**Research Use Only. Not for
diagnostic or therapeutic use.**

EB10211 - Goat Anti-GRIN3B Antibody

Size: 100µg specific antibody in 200µl



Target Protein

Principal Names: glutamate receptor, ionotropic, N-methyl-D-aspartate 3B, NMDA receptor subunit 3B, NMDA type glutamate receptor subunit NR3B, NR3B, GRIN3B

Official Symbol: GRIN3B

Accession Number(s): NP_619635.1

Human GeneID(s): [116444](#)

Immunogen

Peptide with sequence C-EAPPHSGRPGSQ, from the C Terminus of the protein sequence according to NP_619635.1.

Please note the [peptide](#) is available for sale.

Purification and Storage

Purified from goat serum by ammonium sulphate precipitation followed by antigen affinity chromatography using the immunizing peptide.

Supplied at 0.5 mg/ml in Tris saline, 0.02% sodium azide, pH7.3 with 0.5% bovine serum albumin.

Aliquot and store at -20°C. Minimize freezing and thawing.

Applications Tested

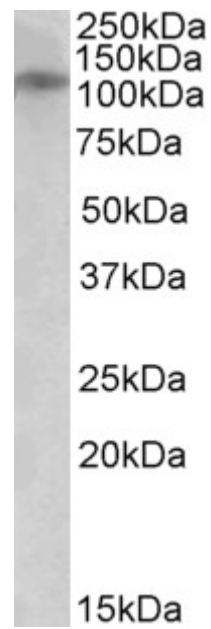
Peptide ELISA: antibody detection limit dilution 1:8000.

Western blot: Approx 110kDa band observed in Human Brain (Cerebellum and Cerebral Cortex) lysates (calculated MW of 113kDa according to NP_619635.1). Recommended concentration: 0.5-1.5µg/ml.

Species Reactivity

Tested: Human

Expected from sequence similarity: Human



EB10211 (0.5 μ g/ml) staining of Human Cerebellum lysate (35 μ g protein in RIPA buffer). Primary incubation was 1 hour. Detected by chemiluminescence.