

UK Office

Everest Biotech Ltd

Cherwell Innovation Centre
77 Heyford Park
Upper Heyford
Oxfordshire
OX25 5HD
UK

Enquiries:

info@everestbiotech.com

Sales:

sales@everestbiotech.com

Tech support:

support@everestbiotech.com

Tel: +44 (0)1869 238326

www.everestbiotech.com

**Research Use Only. Not for
diagnostic or therapeutic use.**

EB07319 - Goat Anti-GPX7 Antibody

Size: 100µg specific antibody in 200µl



Target Protein

Principal Names: GPX7, glutathione peroxidase 7 [Homo sapiens], HGNC:4559, CL683, FLJ14777, GPX6, NPGPx, non-selenocysteine containing phospholipid hydroperoxide glutathione peroxidase

Official Symbol: GPX7

Accession Number(s): NP_056511.2

Human GeneID(s): [2882](#)

Non-Human GeneID(s): 67305 (mouse), 298376 (rat)

Immunogen

Peptide with sequence CNQFGQQEPDSNK, from the internal region of the protein sequence according to NP_056511.2.

Please note the [peptide](#) is available for sale.

Purification and Storage

Purified from goat serum by ammonium sulphate precipitation followed by antigen affinity chromatography using the immunizing peptide.

Supplied at 0.5 mg/ml in Tris saline, 0.02% sodium azide, pH7.3 with 0.5% bovine serum albumin.

Aliquot and store at -20°C. Minimize freezing and thawing.

Applications Tested

Peptide ELISA: antibody detection limit dilution 1:32000.

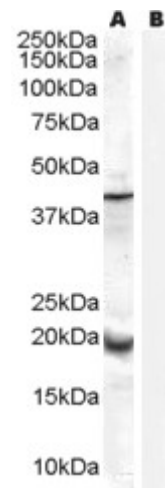
Western blot: Approx 20kDa band observed in Human Prostate lysates (calculated MW of 21.0kDa according to NP_056511.2). Recommended concentration: 0.3-1µg/ml. An additional band of unknown identity was also consistently observed at 40kDa. This band was successfully blocked by incubation with the immunising peptide. We would appreciate any feedback from people in the field - have any results been reported with other antibodies/lysates? Have any further splice variants/modified forms been reported?

Enzyme immunoassay: Sandwich-type ELISA with increasing amount of recombinant GPX7 captured by a rabbit antibody. Recommended reporter concentration: 5-10ug/ml

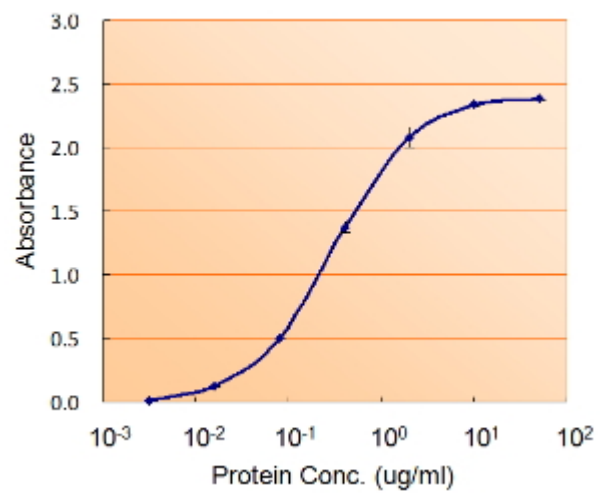
Species Reactivity

Tested: Human

Expected from sequence similarity: Human



EB07319 (0.3 μ g/ml) staining of Human Prostate lysate (35 μ g protein in RIPA buffer) with (B) and without (A) blocking with the immunising peptide. Primary incubation was 1 hour. Detected by chemiluminescence.



EB7319 (5ug/ml) as the reporter with EB002012 as the capture rabbit antibody (5ug/ml).