

## UK Office

### Everest Biotech Ltd

Cherwell Innovation Centre  
77 Heyford Park  
Upper Heyford  
Oxfordshire  
OX25 5HD  
UK

Enquiries:

[info@everestbiotech.com](mailto:info@everestbiotech.com)

Sales:

[sales@everestbiotech.com](mailto:sales@everestbiotech.com)

Tech support:

[support@everestbiotech.com](mailto:support@everestbiotech.com)

Tel: +44 (0)1869 238326

[www.everestbiotech.com](http://www.everestbiotech.com)

**Research Use Only. Not for  
diagnostic or therapeutic use.**

## EB07685 - Goat Anti-GPX3 Antibody

Size: 100µg specific antibody in 200µl



### Target Protein

**Principal Names:** GPX3, glutathione peroxidase 3 (plasma), GPx-P, GSHPx-3, GSHPx-P, extracellular glutathione peroxidase, plasma glutathione peroxidase 3

**Official Symbol:** GPX3

**Accession Number(s):** NP\_002075.2

**Human GeneID(s):** [2878](#)

**Non-Human GeneID(s):** 14778 (mouse), 64317 (rat)

**Important Comments:** This antibody may cross-react with epididymis-specific GPX5 and olfactory epithelium-specific GPX6

### Immunogen

Peptide with sequence C-NQFGKQEPGENSE, from the internal region of the protein sequence according to NP\_002075.2.

Please note the [peptide](#) is available for sale.

### Purification and Storage

Purified from goat serum by ammonium sulphate precipitation followed by antigen affinity chromatography using the immunizing peptide.

Supplied at 0.5 mg/ml in Tris saline, 0.02% sodium azide, pH7.3 with 0.5% bovine serum albumin.

Aliquot and store at -20°C. Minimize freezing and thawing.

### Applications Tested

**Peptide ELISA:** antibody detection limit dilution 1:1000.

**Western blot:** Approx 26kDa band observed in Mouse Kidney and Liver lysates (calculated MW of 27.7kDa according to Mouse NP\_001077398.1 [isoform1], 25.4kDa according to Mouse NP\_032187.2 [isoform 2] and 25.5kDa according to Human NP\_002075.2). Recommended concentration: 1-3µg/ml. Primary incubation was 1 hour.

**IHC:** Paraffin embedded Human Placenta and Colon. Recommended concentration: 5µg/ml. Frozen sections of Porcine Kidney shows vesicular staining of the cytoplasm in PCT epithelial cells. Recommended concentration: 20µg/ml.

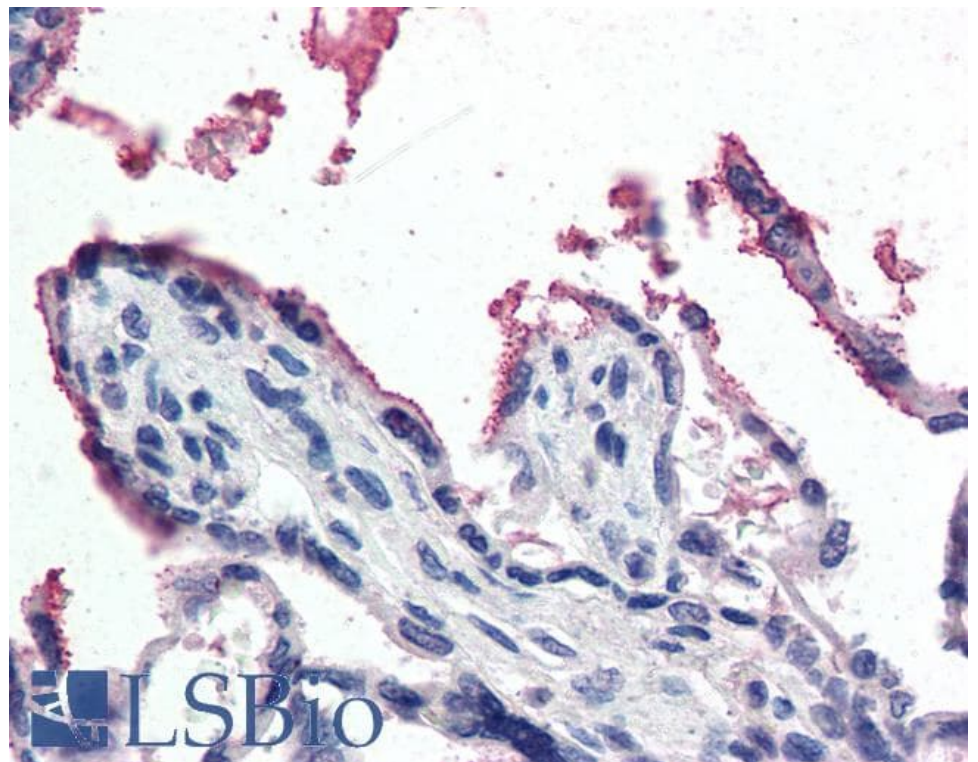
### Species Reactivity

**Tested:** Human, Mouse, Pig

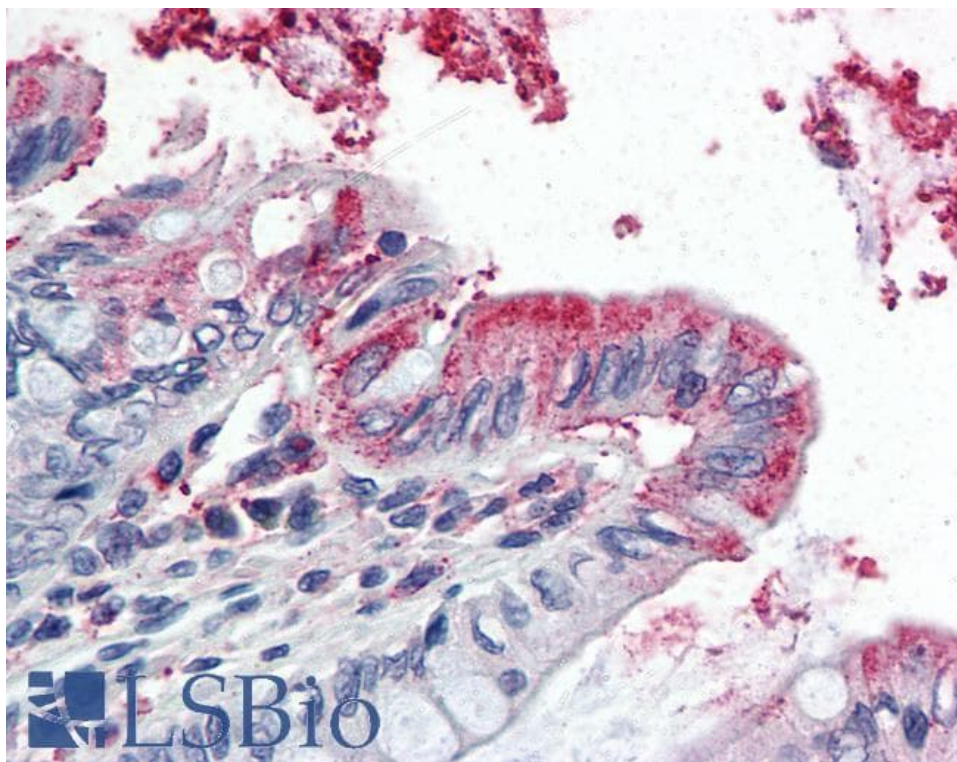
**Expected from sequence similarity:** Human, Mouse, Rat, Dog, Pig

250kDa  
150kDa  
100kDa  
75kDa  
50kDa  
37kDa  
25kDa  
20kDa  
15kDa

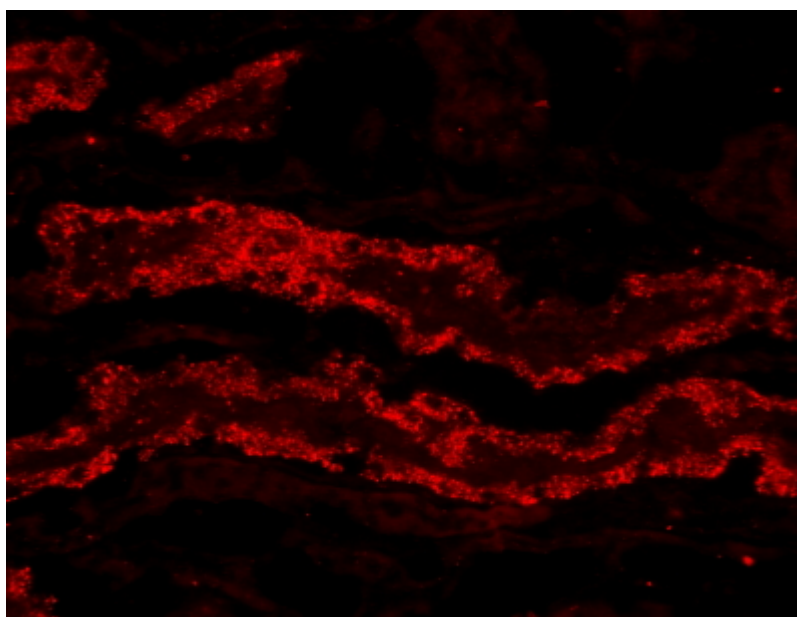
EB07685 (1µg/ml) staining of Mouse Heart lysate (35µg protein in RIPA buffer). Detected by chemiluminescence.



EB07685 (5µg/ml) staining of paraffin embedded Human Placenta. Steamed antigen retrieval with citrate buffer pH 6, AP-staining.



EB07685 (5µg/ml) staining of paraffin embedded Human Colon. Steamed antigen retrieval with citrate buffer pH 6, AP-staining.



EB07685 (20µg/ml) staining of PFA-perfused cryosection of Porcine Kidney. Microwave antigen retrieval with citrate buffer pH 3, CY3-staining. Data obtained from Dr. Hrvoje Brzica, University of Zagreb, Croatia.