

UK Office

Everest Biotech Ltd

Cherwell Innovation Centre
77 Heyford Park
Upper Heyford
Oxfordshire
OX25 5HD
UK

Enquiries:

info@everestbiotech.com

Sales:

sales@everestbiotech.com

Tech support:

support@everestbiotech.com

Tel: +44 (0)1869 238326

www.everestbiotech.com

**Research Use Only. Not for
diagnostic or therapeutic use.**

EB07596 - Goat Anti-GPSM2 Antibody

Size: 100µg specific antibody in 200µl



Target Protein

Principal Names: GPSM2, G-protein signalling modulator 2 (AGS3-like, C. elegans), HGNC:29501, LGN, Pins, LGN protein

Official Symbol: GPSM2

Accession Number(s): NP_037428.2

Human GeneID(s): [29899](#)

Immunogen

Peptide with sequence C-NRLKGKKYKTNSTK, from the internal region of the protein sequence according to NP_037428.2.

Please note the [peptide](#) is available for sale.

Purification and Storage

Purified from goat serum by ammonium sulphate precipitation followed by antigen affinity chromatography using the immunizing peptide.

Supplied at 0.5 mg/ml in Tris saline, 0.02% sodium azide, pH7.3 with 0.5% bovine serum albumin.

Aliquot and store at -20°C. Minimize freezing and thawing.

Applications Tested

Peptide ELISA: antibody detection limit dilution 1:64000.

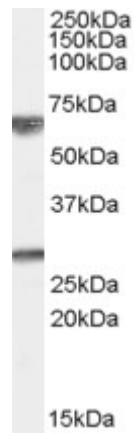
Western blot: Approx 70kDa band observed in Human Brain (Cerebellum) and Human Liver lysates (calculated MW of 75.8kDa according to NP_037428.2). Recommended concentration: 0.01-0.03µg/ml. An additional band of unknown identity was also consistently observed at 26-28kDa. This band was successfully blocked by incubation with the immunising peptide.

IHC: Paraffin embedded Human Testis. Recommended concentration: 5µg/ml.

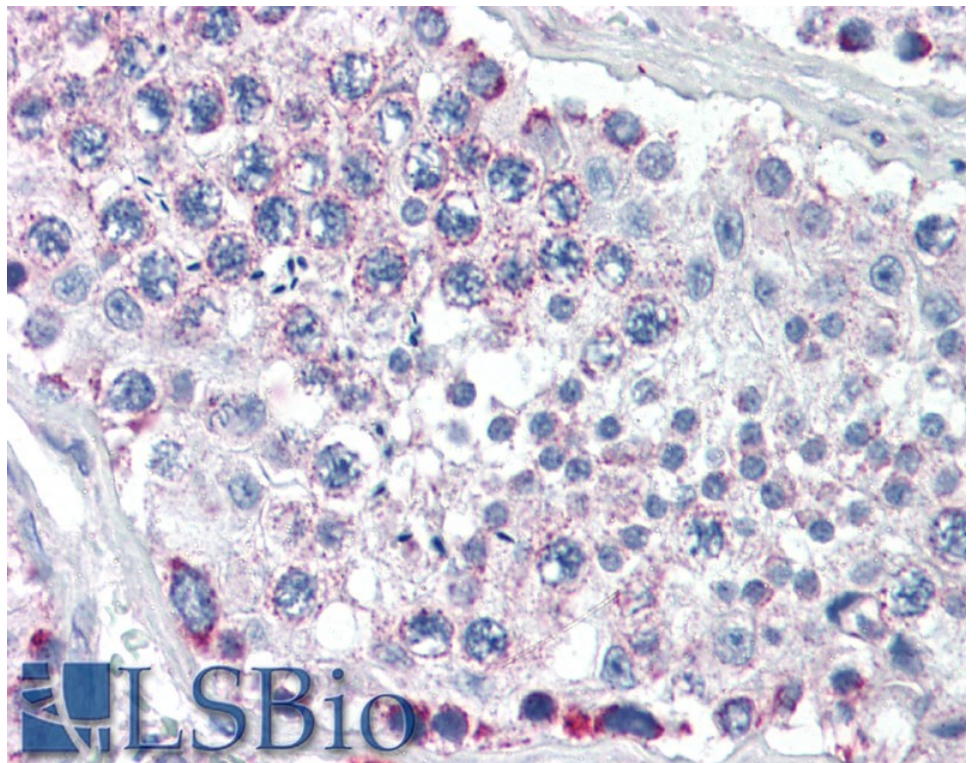
Species Reactivity

Tested: Human

Expected from sequence similarity: Human, Dog



EB07596 (0.01 μ g/ml) staining of Human Brain (Cerebellum) lysate (35 μ g protein in RIPA buffer). Primary incubation was 1 hour. Detected by chemiluminescence.



EB07596 (5 μ g/ml) staining of paraffin embedded Human Testis. Steamed antigen retrieval with citrate buffer pH 6, AP-staining.