

UK Office

Everest Biotech Ltd

Cherwell Innovation Centre
77 Heyford Park
Upper Heyford
Oxfordshire
OX25 5HD
UK

Enquiries:

info@everestbiotech.com

Sales:

sales@everestbiotech.com

Tech support:

support@everestbiotech.com

Tel: +44 (0)1869 238326

www.everestbiotech.com

**Research Use Only. Not for
diagnostic or therapeutic use.**

EB08400 - Goat Anti-GOT2 Antibody

Size: 100µg specific antibody in 200µl



Target Protein

Principal Names: GOT2, glutamic-oxaloacetic transaminase 2, mitochondrial aspartate aminotransferase 2, FLJ40994, aspartate aminotransferase 2

Official Symbol: GOT2

Accession Number(s): NP_002071.2

Human GeneID(s): [2806](#)

Immunogen

Peptide with sequence QGYRYYPKTCGFD, from the internal region of the protein sequence according to NP_002071.2.

Please note the [peptide](#) is available for sale.

Purification and Storage

Purified from goat serum by ammonium sulphate precipitation followed by antigen affinity chromatography using the immunizing peptide.

Supplied at 0.5 mg/ml in Tris saline, 0.02% sodium azide, pH7.3 with 0.5% bovine serum albumin.

Aliquot and store at -20°C. Minimize freezing and thawing.

Applications Tested

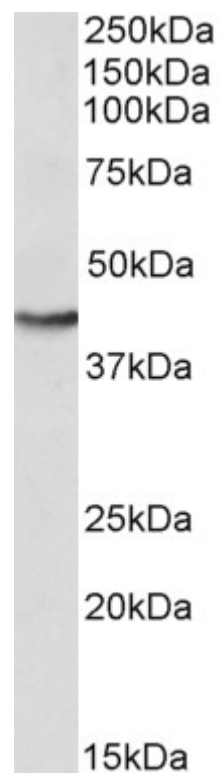
Peptide ELISA: antibody detection limit dilution 1:8000.

Western blot: Approx 45kDa band observed in lysates of cell line HepG2, and of Mouse Brain and Heart (calculated MW of 47.5kDa according to human NP_002071.2 and 47.4kDa according to mouse NP_034455.1). Recommended concentration: 0.3-1µg/ml.

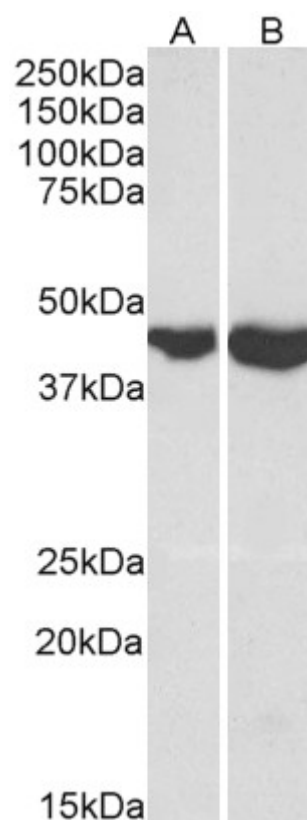
Species Reactivity

Tested: Human, Mouse

Expected from sequence similarity: Human, Mouse, Rat, Dog, Pig, Cow



EB08400 (0.3 μ g/ml) staining of HepG2 lysate (35 μ g protein in RIPA buffer). Primary incubation was 1 hour. Detected by chemiluminescence.



EB08400 (0.1 μ g/ml) staining of Mouse Brain (A) and Heart (B) lysates (35 μ g protein in RIPA buffer). Primary incubation was 1 hour. Detected by chemiluminescence.