



## UK Office

### Everest Biotech Ltd

Cherwell Innovation Centre  
77 Heyford Park  
Upper Heyford  
Oxfordshire  
OX25 5HD  
UK

Enquiries:

[info@everestbiotech.com](mailto:info@everestbiotech.com)

Sales:

[sales@everestbiotech.com](mailto:sales@everestbiotech.com)

Tech support:

[support@everestbiotech.com](mailto:support@everestbiotech.com)

Tel: +44 (0)1869 238326

[www.everestbiotech.com](http://www.everestbiotech.com)

**Research Use Only. Not for  
diagnostic or therapeutic use.**

## EB08187 - Goat Anti-GOT2 (aa 360 to 373) Antibody

Size: 100µg specific antibody in 200µl



### Target Protein

**Principal Names:** GOT2, glutamic-oxaloacetic transaminase 2, mitochondrial (aspartate aminotransferase 2), FLJ40994, aspartate aminotransferase 2, KAT4, KATIV, mitAAT, kynurenine aminotransferase IV

**Official Symbol:** GOT2

**Accession Number(s):** NP\_002071.2

**Human GeneID(s):** [2806](#)

**Non-Human GeneID(s):** 14719 (mouse), 25721 (rat)

### Immunogen

Peptide with sequence C-SNLKKEGSTHNWQH, from the internal region of the protein sequence according to NP\_002071.2.

Please note the [peptide](#) is available for sale.

### Purification and Storage

Purified from goat serum by ammonium sulphate precipitation followed by antigen affinity chromatography using the immunizing peptide.

Supplied at 0.5 mg/ml in Tris saline, 0.02% sodium azide, pH7.3 with 0.5% bovine serum albumin.

Aliquot and store at -20°C. Minimize freezing and thawing.

### Applications Tested

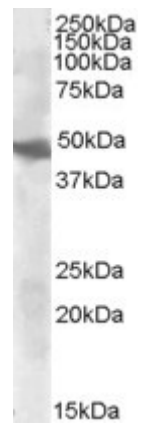
**Peptide ELISA:** antibody detection limit dilution 1:4000.

**Western blot:** Approx 48kDa band observed in Human Liver lysates (calculated MW of 47.5kDa according to NP\_002071.2). Recommended concentration: 0.3-1µg/ml.

### Species Reactivity

**Tested:** Human

**Expected from sequence similarity:** Human, Mouse, Rat



EB08187 (0.3µg/ml) staining of Human Liver cell lysate (35µg protein in RIPA buffer). Primary incubation was 1 hour. Detected by chemiluminescence.