

## UK Office

### Everest Biotech Ltd

Cherwell Innovation Centre  
77 Heyford Park  
Upper Heyford  
Oxfordshire  
OX25 5HD  
UK

Enquiries:

[info@everestbiotech.com](mailto:info@everestbiotech.com)

Sales:

[sales@everestbiotech.com](mailto:sales@everestbiotech.com)

Tech support:

[support@everestbiotech.com](mailto:support@everestbiotech.com)

Tel: +44 (0)1869 238326

[www.everestbiotech.com](http://www.everestbiotech.com)

**Research Use Only. Not for  
diagnostic or therapeutic use.**

## EB05667 - Goat Anti-GOLPH2 Antibody

Size: 100µg specific antibody in 200µl



### Target Protein

**Principal Names:** GOLM1, GOLPH2, golgi phosphoprotein 2, GP73, golgi membrane protein GP73, golgi membrane protein 1, RP11-379P1.3, C9orf155, FLJ22634, FLJ23608, PSEC0257, bA379P1.3, golgi protein, 73-kD

**Official Symbol:** GOLM1

**Accession Number(s):** NP\_057632.2; NP\_808800.1

**Human GeneID(s):** [51280](#)

**Important Comments:** Both variants (NP\_057632.2; NP\_808800.1) encode the same isoform

### Immunogen

Peptide with sequence C-NLLDQREKRNHTL, from the C Terminus of the protein sequence according to NP\_057632.2; NP\_808800.1.

Please note the [peptide](#) is available for sale.

### Purification and Storage

Purified from goat serum by ammonium sulphate precipitation followed by antigen affinity chromatography using the immunizing peptide.

Supplied at 0.5 mg/ml in Tris saline, 0.02% sodium azide, pH7.3 with 0.5% bovine serum albumin.

Aliquot and store at -20°C. Minimize freezing and thawing.

### Applications Tested

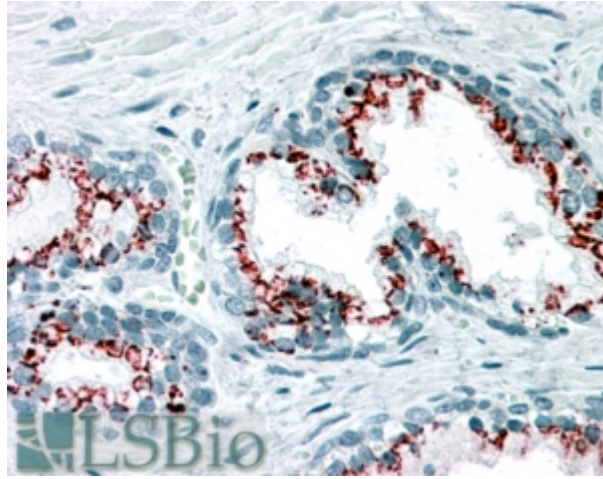
**Peptide ELISA:** antibody detection limit dilution 1:16000.

**IHC:** In paraffin embedded Human Prostate shows luminal staining of secretory cells in the glands. Recommended concentration: 3-6µg/ml. Paraffin embedded Human Uterus and Small Intestine. Recommended concentration: 3.75µg/ml.

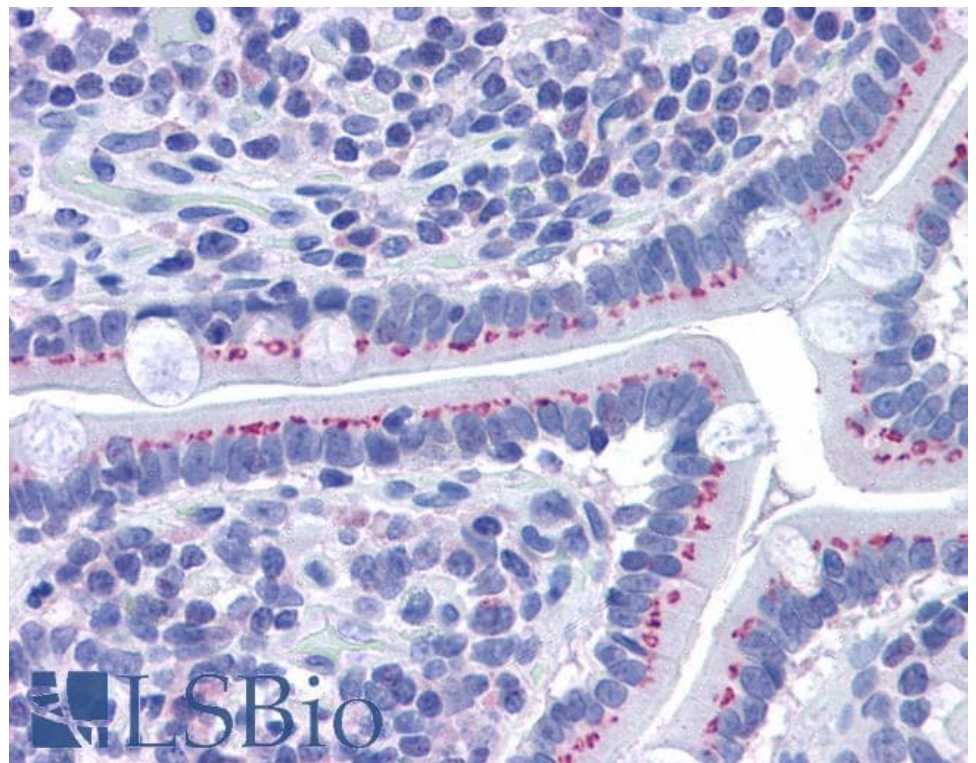
### Species Reactivity

**Tested:** Human

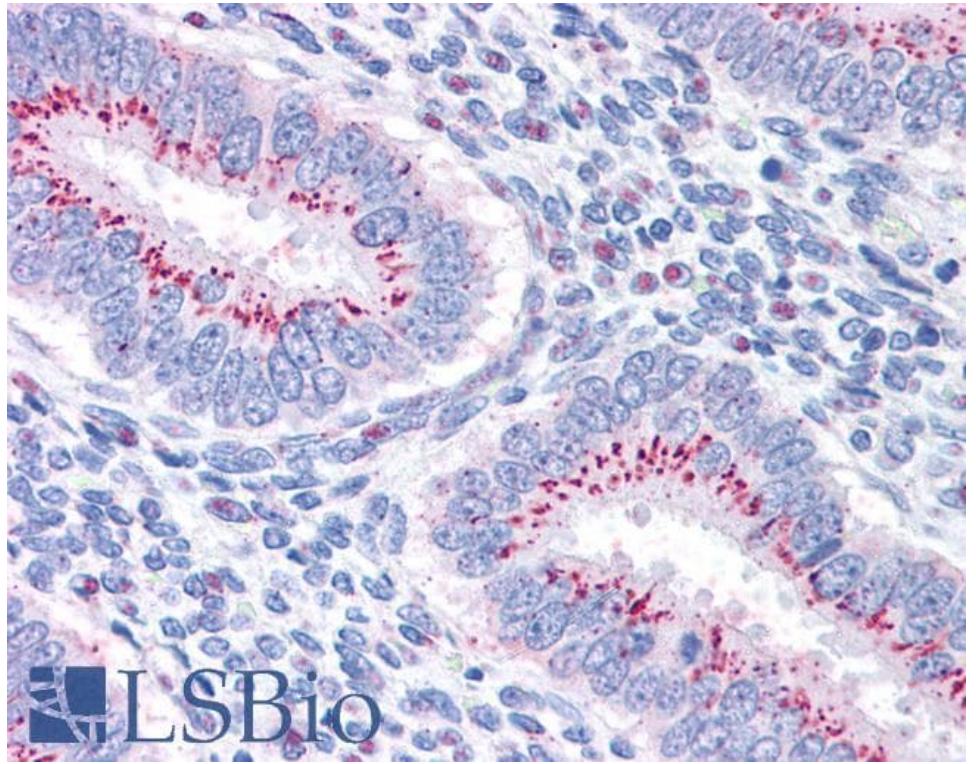
**Expected from sequence similarity:** Human



EB05667 (3.75µg/ml) staining of paraffin embedded Human Prostate. Steamed antigen retrieval with citrate buffer pH 6, AP-staining.



EB05667 (3.75µg/ml) staining of paraffin embedded Human Small Intestine. Steamed antigen retrieval with citrate buffer pH 6, AP-staining.



EB05667 (3.75µg/ml) staining of paraffin embedded Human Uterus. Steamed antigen retrieval with citrate buffer pH 6, AP-staining.