

UK Office

Everest Biotech Ltd

Cherwell Innovation Centre
77 Heyford Park
Upper Heyford
Oxfordshire
OX25 5HD
UK

Enquiries:

info@everestbiotech.com

Sales:

sales@everestbiotech.com

Tech support:

support@everestbiotech.com

Tel: +44 (0)1869 238326

www.everestbiotech.com

**Research Use Only. Not for
diagnostic or therapeutic use.**

EB06824 - Goat Anti-Glutathione peroxidase 2 (Int) Antibody

Size: 100µg specific antibody in 200µl



Target Protein

Principal Names: glutathione peroxidase 2 (gastrointestinal), HGNC:4554, GPX2, GI-GPx, GSHPX-GI, gastrointestinal glutathione peroxidase 2, GPRP, GSHPx-2, glutathione peroxidase 2, glutathione peroxidase-related protein 2

Official Symbol: GPX2

Accession Number(s): NP_002074.2

Human GeneID(s): [2877](#)

Immunogen

Peptide with sequence C-SLDGEKVDFN, from the internal region of the protein sequence according to NP_002074.2.

Please note the [peptide](#) is available for sale.

Purification and Storage

Purified from goat serum by ammonium sulphate precipitation followed by antigen affinity chromatography using the immunizing peptide.

Supplied at 0.5 mg/ml in Tris saline, 0.02% sodium azide, pH7.3 with 0.5% bovine serum albumin.

Aliquot and store at -20°C. Minimize freezing and thawing.

Applications Tested

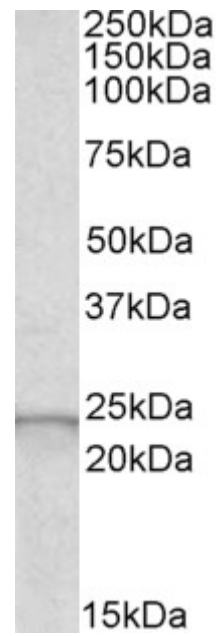
Peptide ELISA: antibody detection limit dilution 1:32000.

Western blot: Approx 24kDa band observed in Human Liver lysates (calculated MW of 21.9kDa according to NP_002074.2). Recommended concentration: 0.5-2µg/ml.

Species Reactivity

Tested: Human

Expected from sequence similarity: Human, Mouse, Rat, Dog, Pig, Cow



EB06824 staining (0.5µg/ml) of Human Liver lysate (RIPA buffer, 30µg total protein per lane). Primary incubated for 1 hour. Detected by chemiluminescence.