

## UK Office

### Everest Biotech Ltd

Cherwell Innovation Centre  
77 Heyford Park  
Upper Heyford  
Oxfordshire  
OX25 5HD  
UK

Enquiries:

[info@everestbiotech.com](mailto:info@everestbiotech.com)

Sales:

[sales@everestbiotech.com](mailto:sales@everestbiotech.com)

Tech support:

[support@everestbiotech.com](mailto:support@everestbiotech.com)

Tel: +44 (0)1869 238326

[www.everestbiotech.com](http://www.everestbiotech.com)

**Research Use Only. Not for  
diagnostic or therapeutic use.**

## EB11675 - Goat Anti-GLP-1-R (mouse) Antibody

Size: 100µg specific antibody in 200µl



### Target Protein

**Principal Names:** GLP-1 receptor, Glp1r, GLP-1R, GLP-1-R, GLP1Rc, glucagon-like peptide 1 receptor

**Official Symbol:** Glp1r

**Accession Number(s):** NP\_067307.2

**Non-Human GeneID(s):** 14652 (mouse)

**Important Comments:** The immunizing peptide represents part of an extracellular region.

### Immunogen

Peptide with sequence C-SKRGERNFPPEEQ, from the internal region of the protein sequence according to NP\_067307.2.

Please note the [peptide](#) is available for sale.

### Purification and Storage

Purified from goat serum by ammonium sulphate precipitation followed by antigen affinity chromatography using the immunizing peptide.

Supplied at 0.5 mg/ml in Tris saline, 0.02% sodium azide, pH7.3 with 0.5% bovine serum albumin.

Aliquot and store at -20°C. Minimize freezing and thawing.

### Applications Tested

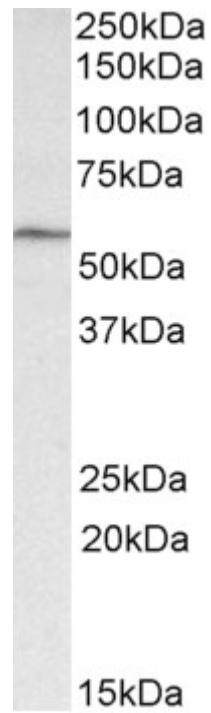
**Peptide ELISA:** antibody detection limit dilution 1:128000.

**Western blot:** Approx 55kDa band observed in Mouse Heart lysates (calculated MW of 53.0kDa according to NP\_067307.2). Recommended concentration: 1-3µg/ml.

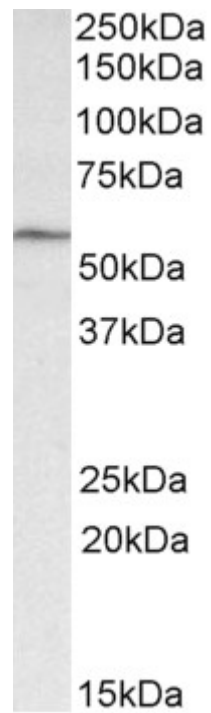
### Species Reactivity

**Tested:** Mouse

**Expected from sequence similarity:** Mouse



EB11675 (1 $\mu$ g/ml) staining of Mouse Heart lysate (35 $\mu$ g protein in RIPA buffer). Primary incubation was 1 hour.  
Detected by chemiluminescence.



EB11675 (1 $\mu$ g/ml) staining of Mouse Heart lysate (35 $\mu$ g protein in RIPA buffer). Primary incubation was 1 hour.  
Detected by chemiluminescence.