

UK Office

Everest Biotech Ltd

Cherwell Innovation Centre
77 Heyford Park
Upper Heyford
Oxfordshire
OX25 5HD
UK

Enquiries:

info@everestbiotech.com

Sales:

sales@everestbiotech.com

Tech support:

support@everestbiotech.com

Tel: +44 (0)1869 238326

www.everestbiotech.com

**Research Use Only. Not for
diagnostic or therapeutic use.**

EB07136 - Goat Anti-GLI2 Antibody

Size: 100µg specific antibody in 200µl



Target Protein

Principal Names: GLI2, GLI-Kruppel family member GLI2, THP2, oncogene GLI2, tax helper protein 2, tax-responsive element-2 holding protein, tax-responsive element-25-bp sequence binding protein, zinc finger protein GLI2

Official Symbol: GLI2

Accession Number(s): NP_005261.2

Human GeneID(s): [2736](#)

Important Comments: This antibody is expected to recognise all four reported isoforms (NP_084655.1, NP_084656.1, NP_084657.1 and NP_005261.1)

Immunogen

Peptide with sequence DLKEDLDRDDCKQE, from the internal region of the protein sequence according to NP_005261.2.

Please note the [peptide](#) is available for sale.

Purification and Storage

Purified from goat serum by ammonium sulphate precipitation followed by antigen affinity chromatography using the immunizing peptide.

Supplied at 0.5 mg/ml in Tris saline, 0.02% sodium azide, pH7.3 with 0.5% bovine serum albumin.

Aliquot and store at -20°C. Minimize freezing and thawing.

Applications Tested

Peptide ELISA: antibody detection limit dilution 1:2000.

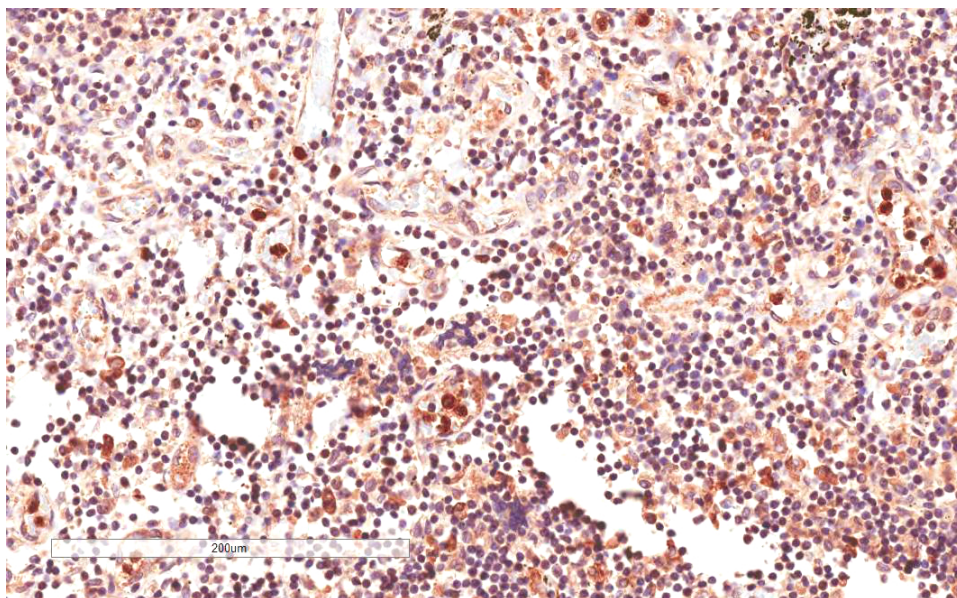
Western blot: Preliminary experiments gave an approx 55kDa band in Human Bone Marrow and Ovary lysates after 1µg/ml antibody staining. Please note that currently we cannot find an explanation in the literature for the band we observe given the calculated size of 168kDa according to NP_005261.2. The 55kDa band was successfully blocked by incubation with the immunizing peptide.

IHC: In paraffin embedded Human Lymph Node shows nuclear staining in macrophages. Recommended concentration: 4-6µg/ml.

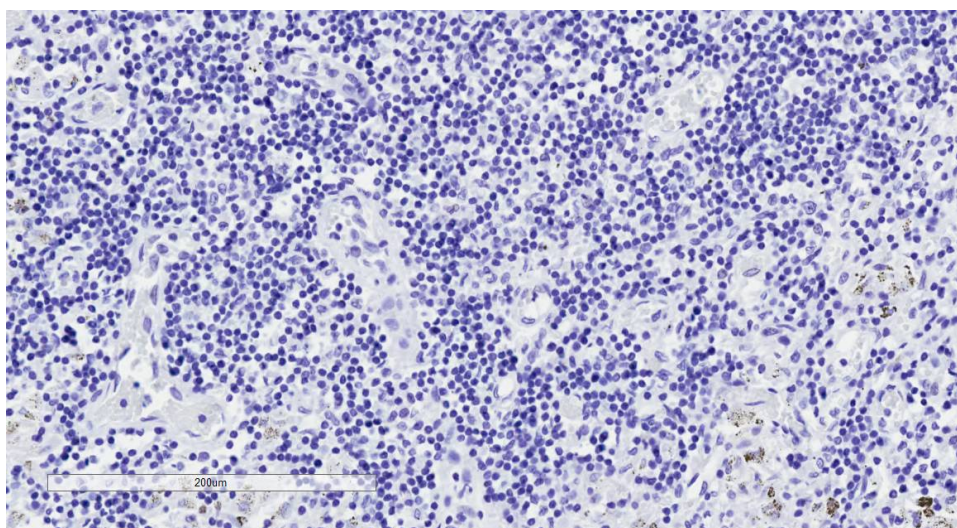
Species Reactivity

Tested: Human

Expected from sequence similarity: Human, Mouse



EB07136 (4µg/ml) staining of paraffin embedded Human Lymph Node. Microwaved antigen retrieval with citrate buffer pH 6, HRP-staining.



EB07136 Negative Control showing staining of paraffin embedded Human Lymph Node, with no primary antibody.