

## UK Office

### Everest Biotech Ltd

Cherwell Innovation Centre  
77 Heyford Park  
Upper Heyford  
Oxfordshire  
OX25 5HD  
UK

Enquiries:

[info@everestbiotech.com](mailto:info@everestbiotech.com)

Sales:

[sales@everestbiotech.com](mailto:sales@everestbiotech.com)

Tech support:

[support@everestbiotech.com](mailto:support@everestbiotech.com)

Tel: +44 (0)1869 238326

[www.everestbiotech.com](http://www.everestbiotech.com)

**Research Use Only. Not for  
diagnostic or therapeutic use.**

## EB11992 - Goat Anti-GGT1 Antibody

Size: 100µg specific antibody in 200µl



### Target Protein

**Principal Names:** GGT1, gamma-glutamyltransferase 1, CD224, D22S672, D22S732, GGT, GGT 1, GTG, gamma-glutamyl transpeptidase, gamma-glutamyltranspeptidase 1, glutamyl transpeptidase, glutathione hydrolase 1

**Official Symbol:** GGT1

**Accession Number(s):** NP\_005256.2

**Human GeneID(s):** [2678](#)

**Important Comments:** Reported variants represent identical protein: NP\_038347.2, NP\_001027536.1, NP\_001027537.1, NP\_005256.2.

### Immunogen

Peptide with sequence C-PSASKEPDNHVYTR, from the internal region (near N terminus) of the protein sequence according to NP\_005256.2.

Please note the [peptide](#) is available for sale.

### Purification and Storage

Purified from goat serum by ammonium sulphate precipitation followed by antigen affinity chromatography using the immunizing peptide.

Supplied at 0.5 mg/ml in Tris saline, 0.02% sodium azide, pH7.3 with 0.5% bovine serum albumin.

Aliquot and store at -20°C. Minimize freezing and thawing.

### Applications Tested

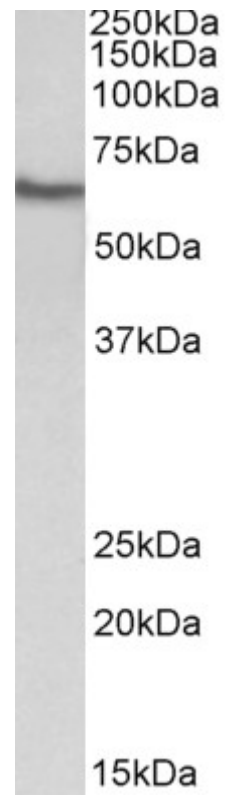
**Peptide ELISA:** antibody detection limit dilution 1:128000.

**Western blot:** Approx 60kDa band observed in Human Kidney lysates (calculated MW of 61.4kDa according to NP\_005256.2). Recommended concentration: 0.3-1µg/ml.

### Species Reactivity

**Tested:** Human

**Expected from sequence similarity:** Human



EB11992 (0.3 $\mu$ g/ml) staining of Human Kidney lysate (35 $\mu$ g protein in RIPA buffer). Primary incubation was 1 hour. Detected by chemiluminescence.