

## UK Office

### Everest Biotech Ltd

Cherwell Innovation Centre  
77 Heyford Park  
Upper Heyford  
Oxfordshire  
OX25 5HD  
UK

Enquiries:

[info@everestbiotech.com](mailto:info@everestbiotech.com)

Sales:

[sales@everestbiotech.com](mailto:sales@everestbiotech.com)

Tech support:

[support@everestbiotech.com](mailto:support@everestbiotech.com)

Tel: +44 (0)1869 238326

[www.everestbiotech.com](http://www.everestbiotech.com)

**Research Use Only. Not for  
diagnostic or therapeutic use.**

## EB07478-T - Goat Anti-GFAP Antibody - Trial

Size: 20µg specific antibody in 40µl



### Target Protein

**Principal Names:** GFAP, glial fibrillary acidic protein, FLJ45472, intermediate filament protein

**Official Symbol:** GFAP

**Accession Number(s):** NP\_002046.1

**Human GeneID(s):** [2670](#)

**Non-Human GeneID(s):** 14580 (mouse), 24387 (rat)

**Important Comments:** GFAP is thought to help to maintain astrocyte mechanical strength, as well as the shape of cells but its exact function remains poorly understood, despite the number of studies using it as a cell marker.

### Immunogen

Peptide with sequence C-DGEVIKESKQEHKD, from the C Terminus of the protein sequence according to NP\_002046.1.

Please note the [peptide](#) is available for sale.

### Purification and Storage

Purified from goat serum by ammonium sulphate precipitation followed by antigen affinity chromatography using the immunizing peptide.

Supplied at 0.5 mg/ml in Tris saline, 0.02% sodium azide, pH7.3 with 0.5% bovine serum albumin.

Aliquot and store at -20°C. Minimize freezing and thawing.

### Applications Tested

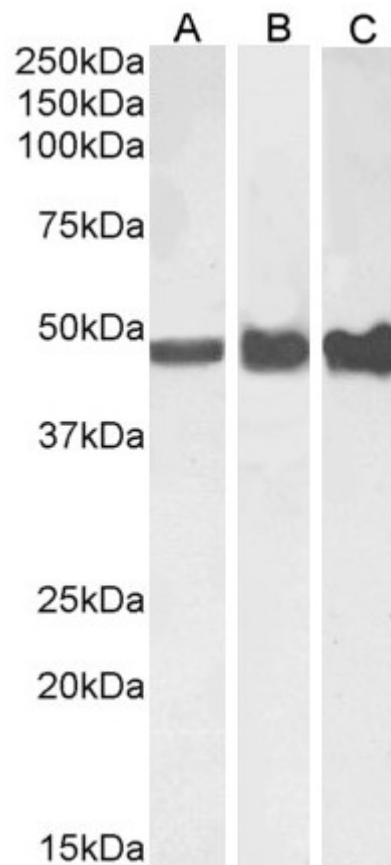
**Peptide ELISA:** antibody detection limit dilution 1:128000.

**Western blot:** Approx 48-50kDa band observed in Human Brain (Cerebellum) and Mouse and Rat Brain lysates (calculated MW of 49.9kDa according to Human NP\_002046.1, Mouse NP\_034407.2 and Rat NP\_058705.2).. Recommended concentration: 0.003-0.03µg/ml. Primary incubation 1 hour.at room temperature.

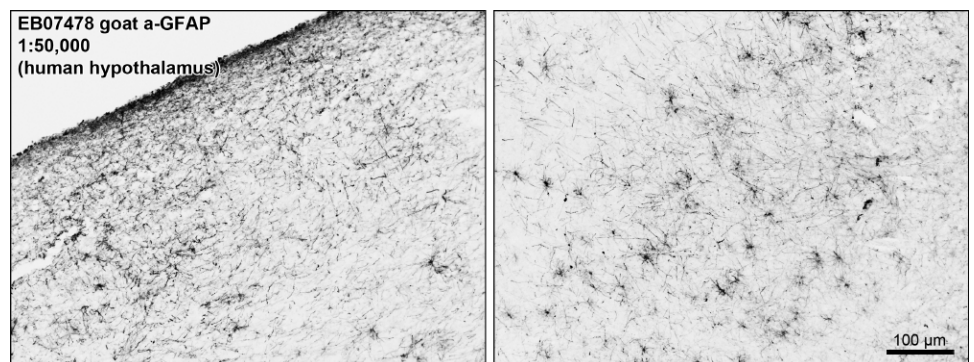
### Species Reactivity

**Tested:** Human, Mouse, Rat

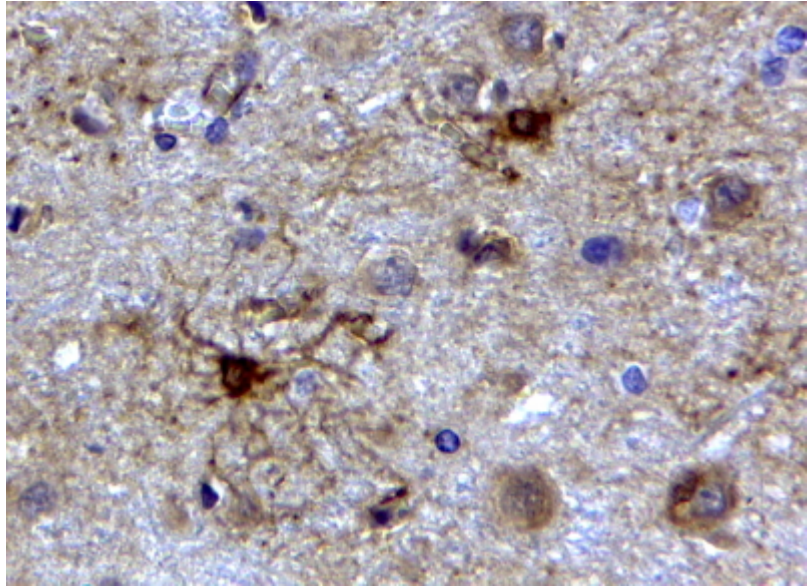
**Expected from sequence similarity:** Human, Mouse, Rat, Dog



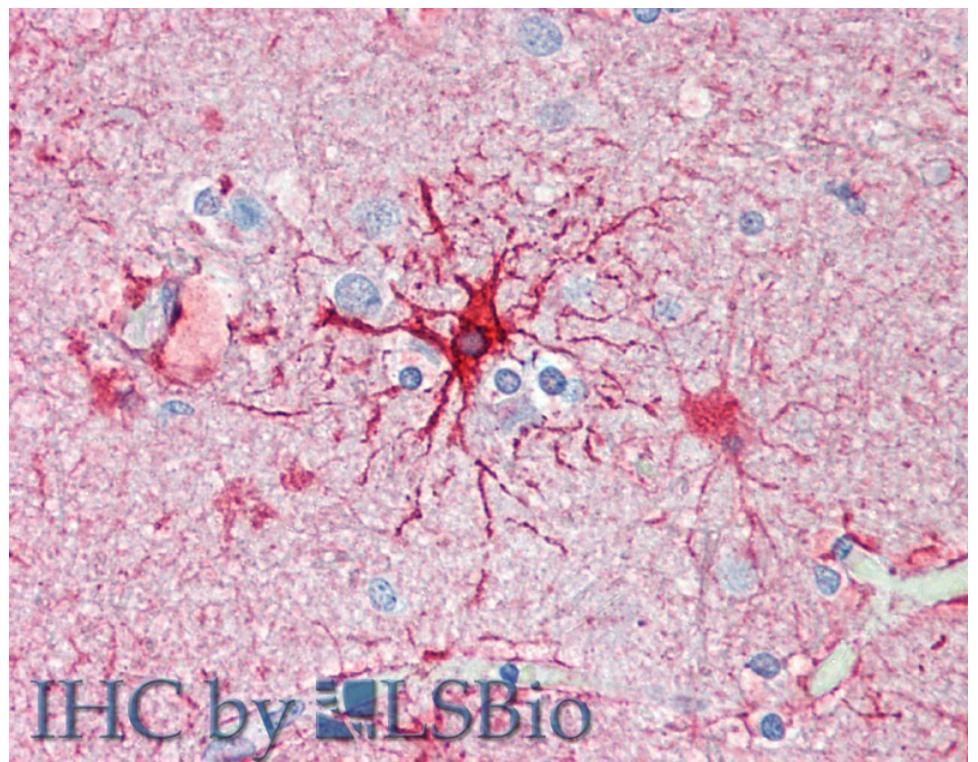
EB07478 (0.01µg/ml) staining of Human Cerebellum (A), Mouse (B) and Rat (C) Brain lysate (35µg protein in RIPA buffer). Detected by chemiluminescence.



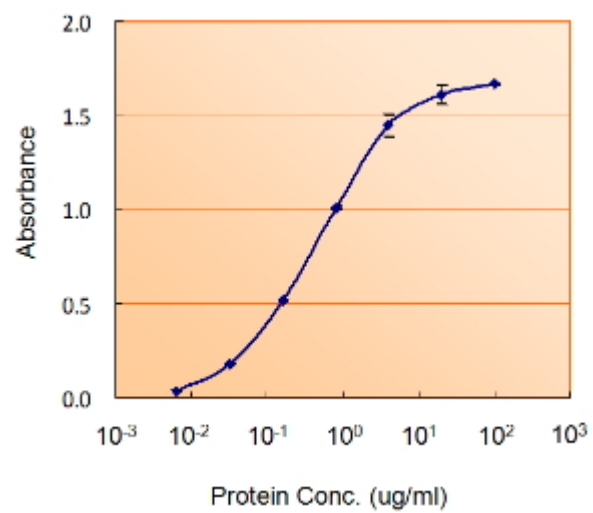
EB07478 (0.01µg/ml) staining of PFA-perfused cryosection of Human Hypothalamus. Antigen retrieval with citrate buffer pH 6 at 80C for 30min, HRP-staining with Ni-DAB after Biotin-SP-antigoat amplification. Data obtained by Prof. Erik Hrabovszky, Inst, Exp, Med., Budapest, Hungary. **This data is from a previous batch, not on sale.**



EB07478 (2µg/ml) staining of paraffin embedded Human Cerebellum. Steamed antigen retrieval with citrate buffer pH 6, HRP-staining. **This data is from a previous batch, not on sale.**



EB07478 (5µg/ml) staining of paraffin embedded Human Cortex. Steamed antigen retrieval with citrate buffer pH 6, AP-staining. **This data is from a previous batch, not on sale.**



EB07478 (5ug/ml) as the reporter with EB002015 as the capture rabbit antibody (5ug/ml). **This data is from a previous batch, not on sale.**