

UK Office

Everest Biotech Ltd

Cherwell Innovation Centre
77 Heyford Park
Upper Heyford
Oxfordshire
OX25 5HD
UK

Enquiries:

info@everestbiotech.com

Sales:

sales@everestbiotech.com

Tech support:

support@everestbiotech.com

Tel: +44 (0)1869 238326

www.everestbiotech.com

**Research Use Only. Not for
diagnostic or therapeutic use.**

EB06909 - Goat Anti-GDF15 Antibody

Size: 100µg specific antibody in 200µl



Target Protein

Principal Names: GDF15, PDF, MIC1, PLAB, MIC-1, NAG-1, PTGFB, GDF-15, growth differentiation factor 15, PTGF-beta, prostate differentiation factor, NSAID (nonsteroidal anti-inflammatory drug)-activated protein 1

Official Symbol: GDF15

Accession Number(s): NP_004855.2

Human GeneID(s): [9518](#)

Immunogen

Peptide with sequence C-QKTDGTGVS LQTYDD, from the C Terminus of the protein sequence according to NP_004855.2.

Please note the [peptide](#) is available for sale.

Purification and Storage

Purified from goat serum by ammonium sulphate precipitation followed by antigen affinity chromatography using the immunizing peptide.

Supplied at 0.5 mg/ml in Tris saline, 0.02% sodium azide, pH7.3 with 0.5% bovine serum albumin.

Aliquot and store at -20°C. Minimize freezing and thawing.

Applications Tested

Peptide ELISA: antibody detection limit dilution 1:2000.

Western blot: Approx 30-35 kDa band observed in Human Testis lysates (calculated MW of 34.1kDa according to NP_004855.1). Recommended concentration: 0.1-0.3µg/ml.

Primary incubation 1 hour at room temperature. **Negative Control:** Human Skin lysate. In transfected HEK293 transiently expressing GDF15 a band of approx. 35 kDa is observed. This band is not observed in the non-transfected HEK293.

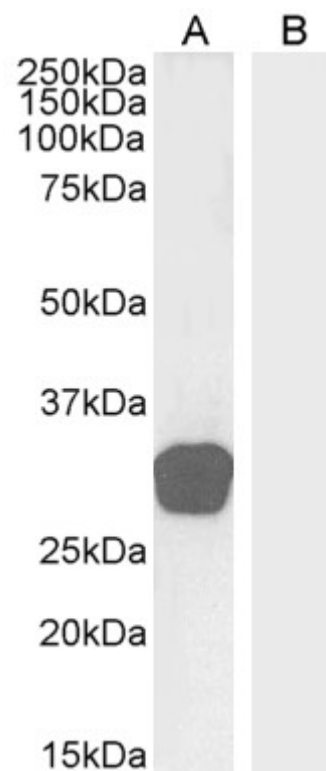
IHC: Paraffin embedded Human Prostate and Placenta. Recommended concentration: 5µg/ml.

Flow Cytometry: Flow cytometric analysis of HeLa cells. Recommended concentration: 10ug/ml.

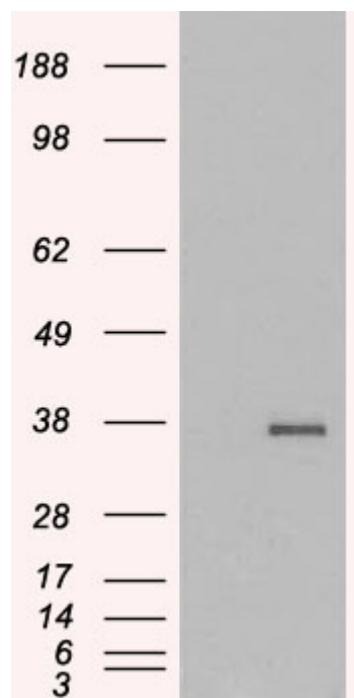
Species Reactivity

Tested: Human

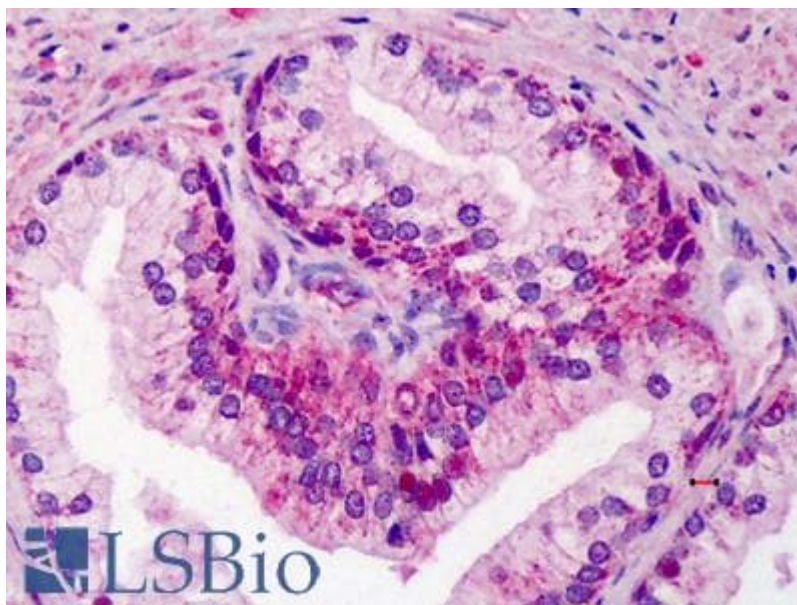
Expected from sequence similarity: Human, Mouse, Rat



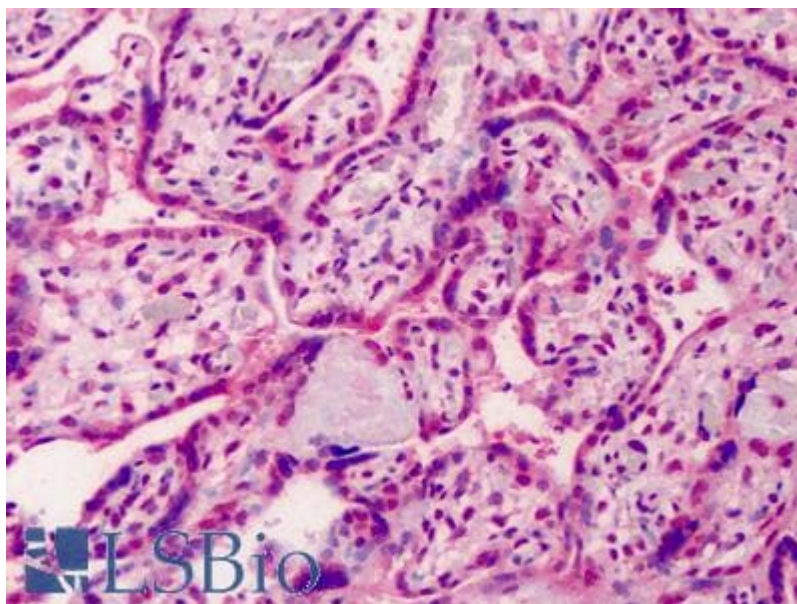
EB06909 (0.3 μ g/ml) staining of Human Testes (A) and negative control Skin (B) lysate (35 μ g protein in RIPA buffer). Detected by chemiluminescence.



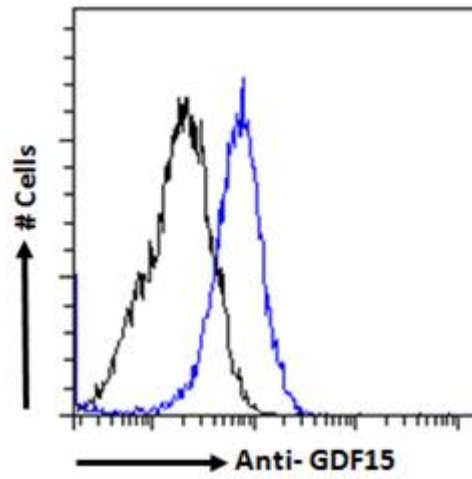
HEK293 overexpressing GDF15 (RC201295) and probed with EB06909 (mock transfection in first lane), tested by Origene.



EB06909 (5µg/ml) staining of paraffin embedded Human Prostate. Steamed antigen retrieval with citrate buffer pH 6, AP-staining.



EB06909 (5µg/ml) staining of paraffin embedded Human Placenta. Steamed antigen retrieval with citrate buffer pH 6, AP-staining.



EB06909 Flow cytometric analysis of paraformaldehyde fixed HeLa cells (blue line), permeabilized with 0.5% Triton. Primary incubation 1hr (10ug/ml) followed by Alexa Fluor 488 secondary antibody (1ug/ml). IgG control: Unimmunized goat IgG (black line) followed by Alexa Fluor 488 secondary antibody.