

UK Office

Everest Biotech Ltd

Cherwell Innovation Centre
77 Heyford Park
Upper Heyford
Oxfordshire
OX25 5HD
UK

Enquiries:

info@everestbiotech.com

Sales:

sales@everestbiotech.com

Tech support:

support@everestbiotech.com

Tel: +44 (0)1869 238326

www.everestbiotech.com

**Research Use Only. Not for
diagnostic or therapeutic use.**

EB08354 - Goat Anti-GCH1 Antibody

Size: 100µg specific antibody in 200µl



Target Protein

Principal Names: GCH1, GTP cyclohydrolase 1 (dopa-responsive dystonia), DYT5, GCH, GTP-CH-1, GTPCH1, GTP cyclohydrolase 1, guanosine 5'-triphosphate cyclohydrolase I

Official Symbol: GCH1

Accession Number(s): NP_000152.1 ; NP_001019195.1 ; NP_001019241.1 ; NP_001019242.1

Human GeneID(s): [2643](#)

Non-Human GeneID(s): 14528 (mouse), 29244 (rat)

Important Comments: This antibody is expected to recognize all four isoforms (NP_000152.1 ; NP_001019195.1 ; NP_001019241.1 ; NP_001019242.1)

Immunogen

Peptide with sequence C-GKVHIGYLPNKQ, from the internal region of the protein sequence according to NP_000152.1 ; NP_001019195.1 ; NP_001019241.1 ; NP_001019242.1 .

Please note the [peptide](#) is available for sale.

Purification and Storage

Purified from goat serum by ammonium sulphate precipitation followed by antigen affinity chromatography using the immunizing peptide.

Supplied at 0.5 mg/ml in Tris saline, 0.02% sodium azide, pH7.3 with 0.5% bovine serum albumin.

Aliquot and store at -20°C. Minimize freezing and thawing.

Applications Tested

Peptide ELISA: antibody detection limit dilution 1:16000.

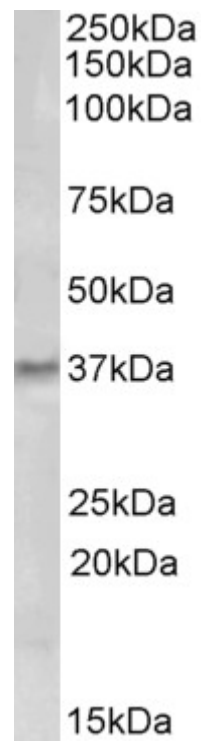
Western blot: Approx. 37kDa band observed in Human Tonsil lysates. Customer's experiments gave identical results in lysates of cell line HUVEC with antibodies raised against different parts of the same protein. (calculated MW of 27.9kDa according to NP_000152.1). Recommended concentration: 0.5-1.5µg/ml. Primary incubation was 1 hour.

IHC: Paraffin embedded Human Brain (Cerebellum) and Small Intestine. Recommended concentration: 5µg/ml.

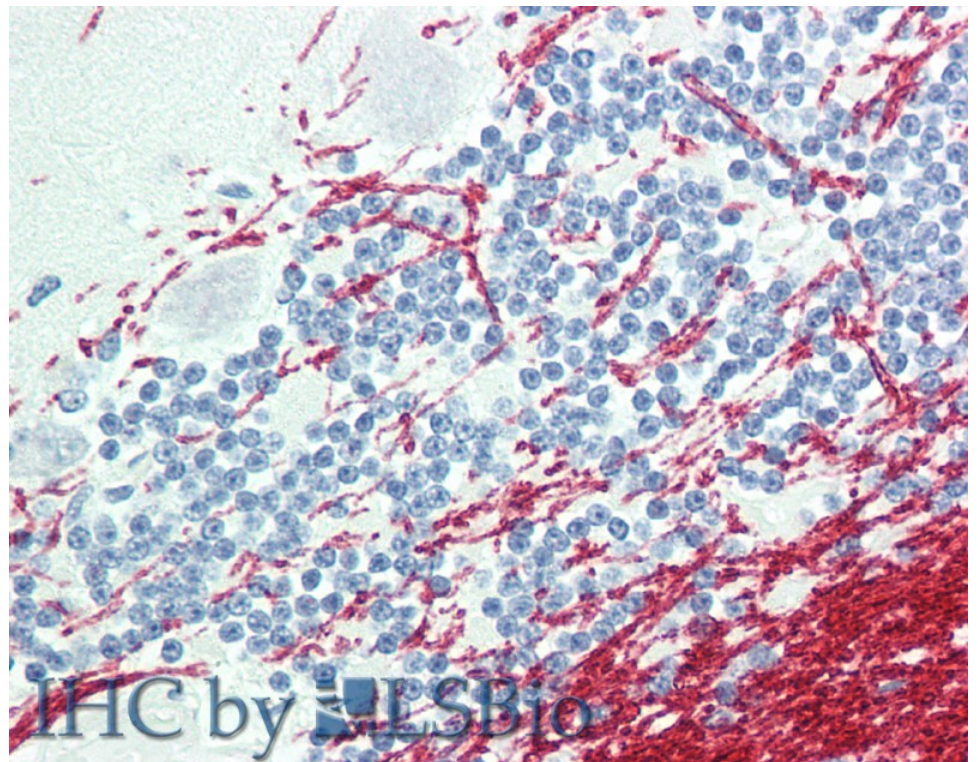
Species Reactivity

Tested: Human

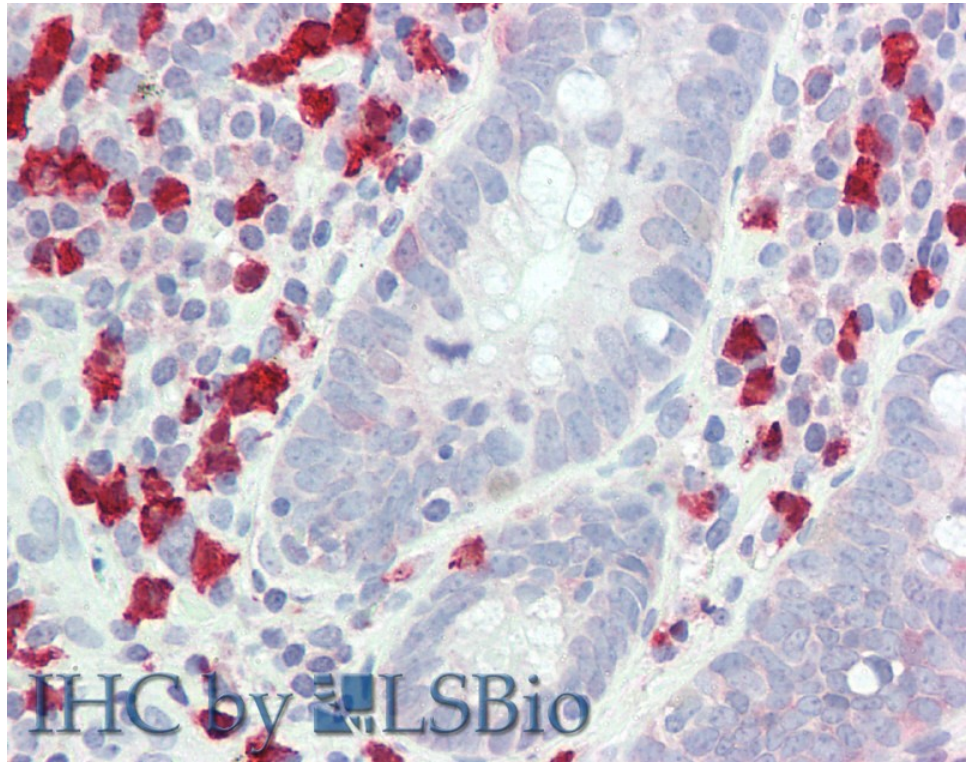
Expected from sequence similarity: Human, Mouse, Rat



EB08354 (0.5µg/ml) staining of Human Tonsil lysate (35µg protein in RIPA buffer). Detected by chemiluminescence.



EB08354 (5µg/ml) staining of paraffin embedded Human Cerebellum. Steamed antigen retrieval with citrate buffer pH 6, AP-staining.



EB08354 (5µg/ml) staining of paraffin embedded Human Small Intestine. Steamed antigen retrieval with citrate buffer pH 6, AP-staining.