

UK Office

Everest Biotech Ltd

Cherwell Innovation Centre
77 Heyford Park
Upper Heyford
Oxfordshire
OX25 5HD
UK

Enquiries:

info@everestbiotech.com

Sales:

sales@everestbiotech.com

Tech support:

support@everestbiotech.com

Tel: +44 (0)1869 238326

www.everestbiotech.com

**Research Use Only. Not for
diagnostic or therapeutic use.**

EB07224 - Goat Anti-GCDFP15 / PIP Antibody

Size: 100µg specific antibody in 200µl



Target Protein

Principal Names: PIP, GCDFP15, prolactin-induced protein, HGNC:8993, GCDFP-15, GP17, GPIP4, prolactin-inducible protein, gross cystic disease fluid protein 15

Official Symbol: PIP

Accession Number(s): NP_002643.1

Human GeneID(s): [5304](#)

Immunogen

Peptide with sequence C-GANKAQDNTRK, from the internal region of the protein sequence according to NP_002643.1.

Please note the [peptide](#) is available for sale.

Purification and Storage

Purified from goat serum by ammonium sulphate precipitation followed by antigen affinity chromatography using the immunizing peptide.

Supplied at 0.5 mg/ml in Tris saline, 0.02% sodium azide, pH7.3 with 0.5% bovine serum albumin.

Aliquot and store at -20°C. Minimize freezing and thawing.

Applications Tested

Peptide ELISA: antibody detection limit dilution 1:128000.

Western blot: Approx 14kDa band observed in lysates of cell line A431 (calculated MW of 16.6kDa according to NP_002643.1). Recommended concentration: 0.3-1µg/ml.

IHC: In paraffin embedded Human Breast shows staining of luminal epithelial cells of the lactiferous duct. Recommended concentration: 2-3µg/ml.

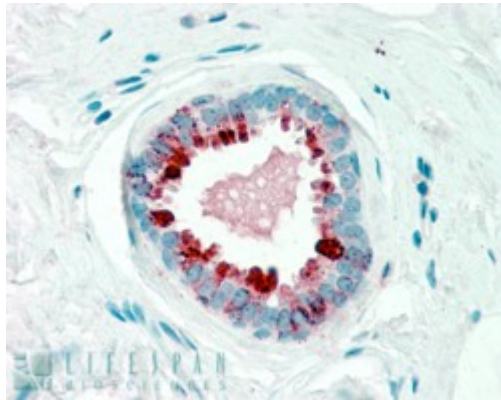
Species Reactivity

Tested: Human

Expected from sequence similarity: Human



EB07224 (0.3 μ g/ml) staining of A431 cell lysate (35 μ g protein in RIPA buffer). Primary incubation was 1 hour.
Detected by chemiluminescence.



EB07224 (2.5 μ g/ml) staining of paraffin embedded Human Breast. Steamed antigen retrieval with citrate buffer
pH 6, AP-staining.