

## UK Office

### Everest Biotech Ltd

Cherwell Innovation Centre  
77 Heyford Park  
Upper Heyford  
Oxfordshire  
OX25 5HD  
UK

Enquiries:

[info@everestbiotech.com](mailto:info@everestbiotech.com)

Sales:

[sales@everestbiotech.com](mailto:sales@everestbiotech.com)

Tech support:

[support@everestbiotech.com](mailto:support@everestbiotech.com)

Tel: +44 (0)1869 238326

[www.everestbiotech.com](http://www.everestbiotech.com)

**Research Use Only. Not for  
diagnostic or therapeutic use.**

## EB06874 - Goat Anti-GATA1 Antibody

Size: 100µg specific antibody in 200µl



### Target Protein

**Principal Names:** GATA1, GATA binding protein 1 (globin transcription factor 1), HGNC:4170, ERYF1, GF1, NFE1, GATA binding protein 1, GATA-binding protein 1 (globin transcription factor 1), erythroid transcription factor 1, globin transcription factor 1, transcription factor GATA1, GF-1, XLTT, NF-E1 DNA-binding protein, erythroid transcription factor 1

**Official Symbol:** GATA1

**Accession Number(s):** NP\_002040.1

**Human GeneID(s):** [2623](#)

### Immunogen

Peptide with sequence C-DAEAYRHSPVFQ, from the internal region of the protein sequence according to NP\_002040.1.

Please note the [peptide](#) is available for sale.

### Purification and Storage

Purified from goat serum by ammonium sulphate precipitation followed by antigen affinity chromatography using the immunizing peptide.

Supplied at 0.5 mg/ml in Tris saline, 0.02% sodium azide, pH7.3 with 0.5% bovine serum albumin.

Aliquot and store at -20°C. Minimize freezing and thawing.

### Applications Tested

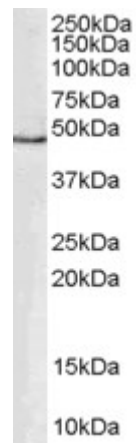
**Peptide ELISA:** antibody detection limit dilution 1:16000.

**Western blot:** Approx 48kDa band observed in lysates of human liver, placenta and peripheral blood mononucleocytes (calculated MW of 42.8kDa according to NP\_002040.1. Recommended concentration: 0.3-1.0µg/ml.

### Species Reactivity

**Tested:** Human

**Expected from sequence similarity:** Human, Mouse, Rat, Dog, Cow



EB06874 (0.3 $\mu$ g/ml) staining of human PBMC lysate (35 $\mu$ g protein in RIPA buffer). Primary incubation was 1 hour. Detected by chemiluminescence.