

## UK Office

### Everest Biotech Ltd

Cherwell Innovation Centre  
77 Heyford Park  
Upper Heyford  
Oxfordshire  
OX25 5HD  
UK

Enquiries:

[info@everestbiotech.com](mailto:info@everestbiotech.com)

Sales:

[sales@everestbiotech.com](mailto:sales@everestbiotech.com)

Tech support:

[support@everestbiotech.com](mailto:support@everestbiotech.com)

Tel: +44 (0)1869 238326

[www.everestbiotech.com](http://www.everestbiotech.com)

**Research Use Only. Not for  
diagnostic or therapeutic use.**

## EB07069-B - Goat Anti-GAPDH (Internal), Biotinylated Antibody

Size: 100µg specific antibody in 200µl



### Target Protein

**Principal Names:** GAPDH, glyceraldehyde-3-phosphate dehydrogenase, G3PD, GAPD, HEL-S-162eP, aging-associated gene 9 protein, epididymis secretory sperm binding protein Li 162eP, peptidyl-cysteine S-nitrosylase GAPDH, glyceraldehyde 3-phosphate dehydrogenase, HGNC:4141, MGC88685

**Official Symbol:** GAPDH

**Accession Number(s):** NP\_002037.2; NP\_001243728.1

**Human GeneID(s):** [2597](#)

**Non-Human GeneID(s):** 14433 (mouse), 24383 (rat)

**Important Comments:** This antibody is expected to recognize both reported isoforms (NP\_002037.2; NP\_001243728.1). Reported variants represent identical protein: NP\_001276674.1, NP\_002037.2, NP\_001276675.1. GAPDH is constitutively expressed in almost all tissues at high levels. It is therefore a useful marker when a loading/positive control is required in western blotting.

### Immunogen

Peptide with sequence C-GVNHEKYDNSLK., from the internal region of the protein sequence according to NP\_002037.2; NP\_001243728.1.

Please note the [peptide](#) is available for sale.

### Purification and Storage

Purified from goat serum by ammonium sulphate precipitation followed by antigen affinity chromatography using the immunizing peptide.

Supplied at 0.5 mg/ml in Tris saline, 0.02% sodium azide, pH7.3 with 0.5% bovine serum albumin.

Aliquot and store at -20°C. Minimize freezing and thawing.

### Applications Tested

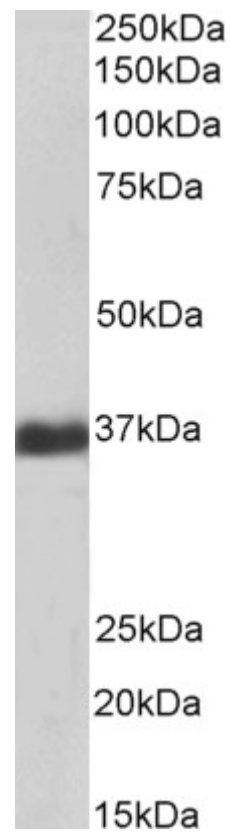
**Peptide ELISA:** antibody detection limit dilution 1:16000.

**Western blot:** Approx 36kDa band observed in Human Liver lysates (calculated MW of 36.1kDa according to NP\_002037.2). See non-biotinylated parental product's datasheet for further QC data. Recommended concentration: 1-3µg/ml.

### Species Reactivity

**Tested:** Human, Mouse, Rat

**Expected from sequence similarity:** Human



Biotinylated EB07069 (1µg/ml) staining of Human Liver lysate (35µg protein in RIPA buffer), exactly mirroring its parental non-biotinylated product. Primary incubation was 1 hour. Detected by chemiluminescence, using streptavidin-HRP and using NAP blocker as a substitute for skimmed milk.