

## UK Office

### Everest Biotech Ltd

Cherwell Innovation Centre  
77 Heyford Park  
Upper Heyford  
Oxfordshire  
OX25 5HD  
UK

Enquiries:

[info@everestbiotech.com](mailto:info@everestbiotech.com)

Sales:

[sales@everestbiotech.com](mailto:sales@everestbiotech.com)

Tech support:

[support@everestbiotech.com](mailto:support@everestbiotech.com)

Tel: +44 (0)1869 238326

[www.everestbiotech.com](http://www.everestbiotech.com)

**Research Use Only. Not for  
diagnostic or therapeutic use.**

## EB09101 - Goat Anti-GABRA4 Antibody

Size: 100µg specific antibody in 200µl



### Target Protein

**Principal Names:** GABRA4, gamma-aminobutyric acid (GABA) A receptor, alpha 4, gamma-aminobutyric acid A receptor, alpha 4

**Official Symbol:** GABRA4

**Accession Number(s):** NP\_000800.2

**Human GeneID(s):** [2557](#)

### Immunogen

Peptide with sequence C-EKAKRKTSKPPQE, from the internal region of the protein sequence according to NP\_000800.2.

Please note the [peptide](#) is available for sale.

### Purification and Storage

Purified from goat serum by ammonium sulphate precipitation followed by antigen affinity chromatography using the immunizing peptide.

Supplied at 0.5 mg/ml in Tris saline, 0.02% sodium azide, pH7.3 with 0.5% bovine serum albumin.

Aliquot and store at -20°C. Minimize freezing and thawing.

### Applications Tested

**Peptide ELISA:** antibody detection limit dilution 1:16000.

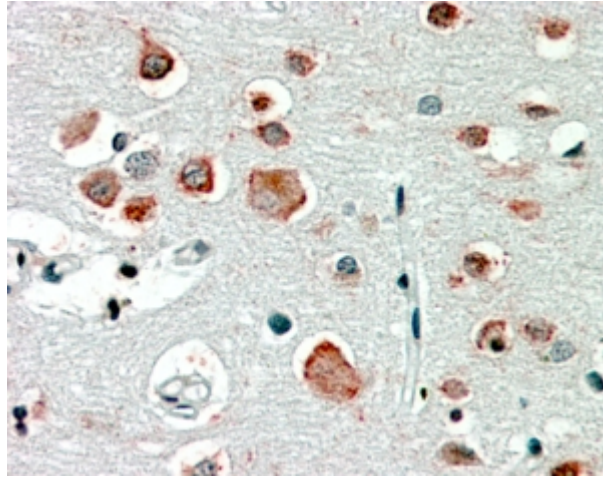
**Western blot:** Approx. 70kDa band observed in Human Brain (Cerebellum and Frontal Cortex) lysates (calculated MW of 61.6kDa according to NP\_000800.2). Recommended concentration: 0.1-0.3µg/ml.

**IHC:** In paraffin embedded Human Cortex shows patchy staining near or at the neuronal cell membrane.. Recommended concentration, 2-4µg/ml.

### Species Reactivity

**Tested:** Human

**Expected from sequence similarity:** Human, Cow



EB09101 (2.5µg/ml) staining of paraffin embedded Human Cortex. Steamed antigen retrieval with citrate buffer pH 6, AP-staining.



EB09101 (0.1µg/ml) staining of Human Frontal Cortex lysate (35µg protein in RIPA buffer). Primary incubation was 1 hour. Detected by chemiluminescence.