

## UK Office

### Everest Biotech Ltd

Cherwell Innovation Centre  
77 Heyford Park  
Upper Heyford  
Oxfordshire  
OX25 5HD  
UK

Enquiries:

[info@everestbiotech.com](mailto:info@everestbiotech.com)

Sales:

[sales@everestbiotech.com](mailto:sales@everestbiotech.com)

Tech support:

[support@everestbiotech.com](mailto:support@everestbiotech.com)

Tel: +44 (0)1869 238326

[www.everestbiotech.com](http://www.everestbiotech.com)

**Research Use Only. Not for  
diagnostic or therapeutic use.**

## EB07823 - Goat Anti-G6PD (aa 305 - 318) Antibody

Size: 100µg specific antibody in 200µl



### Target Protein

**Principal Names:** G6PD, glucose-6-phosphate dehydrogenase, G6PD1, glucose-6-phosphate 1-dehydrogenase, glucose-6-phosphate dehydrogenase, G6PD

**Official Symbol:** G6PD

**Accession Number(s):** NP\_000393.4 ; NP\_001035810.1

**Human GeneID(s):** [2539](#)

**Non-Human GeneID(s):** 14381 (mouse), 24377 (rat)

**Important Comments:** This antibody is expected to recognise both reported isoforms (NP\_000393.4 and NP\_001035810.1).

### Immunogen

Peptide with sequence C-KPASTNSDDVRDEK, from the internal region of the protein sequence according to NP\_000393.4 ; NP\_001035810.1.

Please note the [peptide](#) is available for sale.

### Purification and Storage

Purified from goat serum by ammonium sulphate precipitation followed by antigen affinity chromatography using the immunizing peptide.

Supplied at 0.5 mg/ml in Tris saline, 0.02% sodium azide, pH7.3 with 0.5% bovine serum albumin.

Aliquot and store at -20°C. Minimize freezing and thawing.

### Applications Tested

**Peptide ELISA:** antibody detection limit dilution 1:8000.

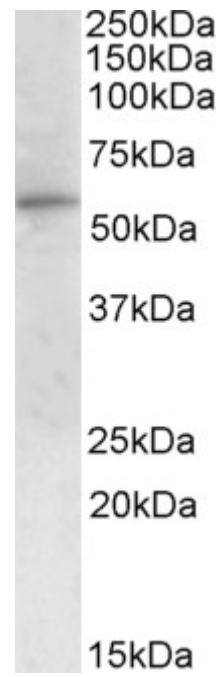
**Western blot:** Approx 55kDa band observed in Human Peripheral Blood Mononucleocyte lysates (calculated MW of 59.3kDa according to NP\_001035810.1). Recommended concentration: 1-3µg/ml.

### Species Reactivity

**Tested:** Human

**Expected from sequence similarity:** Human, Mouse, Rat, Dog





EB07823 (1µg/ml) staining of Peripheral Blood Mononucleocytes lysate (35µg protein in RIPA buffer). Primary incubation was 1 hour. Detected by chemiluminescence.