

## UK Office

### Everest Biotech Ltd

Cherwell Innovation Centre  
77 Heyford Park  
Upper Heyford  
Oxfordshire  
OX25 5HD  
UK

Enquiries:

[info@everestbiotech.com](mailto:info@everestbiotech.com)

Sales:

[sales@everestbiotech.com](mailto:sales@everestbiotech.com)

Tech support:

[support@everestbiotech.com](mailto:support@everestbiotech.com)

Tel: +44 (0)1869 238326

[www.everestbiotech.com](http://www.everestbiotech.com)

**Research Use Only. Not for  
diagnostic or therapeutic use.**

## EB10981 - Goat Anti-FUT2 Antibody

Size: 100µg specific antibody in 200µl



### Target Protein

**Principal Names:** FUT2, fucosyltransferase 2 (secretor status included), B12QTL1, SE, SEC2, Se2, sej, GDP-L-fucose:beta-D-galactoside 2-alpha-L-fucosyltransferase 2, alpha (1,2) fucosyltransferase, alpha(1,2)FT2, galactoside 2-alpha-L-fucosyltransferase 2

**Official Symbol:** FUT2

**Accession Number(s):** NP\_000502.4

**Human GeneID(s):** [2524](#)

**Important Comments:** Reported variants represent identical protein: NP\_001091107.1, NP\_000502.4

### Immunogen

Peptide with sequence C-HVQQRRLAKIQAMWE, from the internal region (near N Terminus) of the protein sequence according to NP\_000502.4.

Please note the [peptide](#) is available for sale.

### Purification and Storage

Purified from goat serum by ammonium sulphate precipitation followed by antigen affinity chromatography using the immunizing peptide.

Supplied at 0.5 mg/ml in Tris saline, 0.02% sodium azide, pH7.3 with 0.5% bovine serum albumin.

Aliquot and store at -20°C. Minimize freezing and thawing.

### Applications Tested

**Peptide ELISA:** antibody detection limit dilution 1:64000.

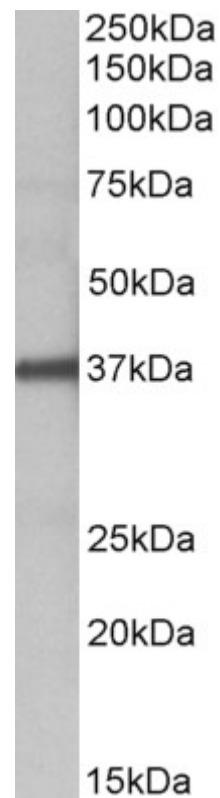
**Western blot:** Approx 37kDa band observed in Human Liver lysates (calculated MW of 39.0kDa according to NP\_000502.4. Recommended concentration: 1-3µg/ml. Primary incubation was 1 hour.

**IHC:** Paraffin embedded Human Placenta. Recommended concentration: 5µg/ml.

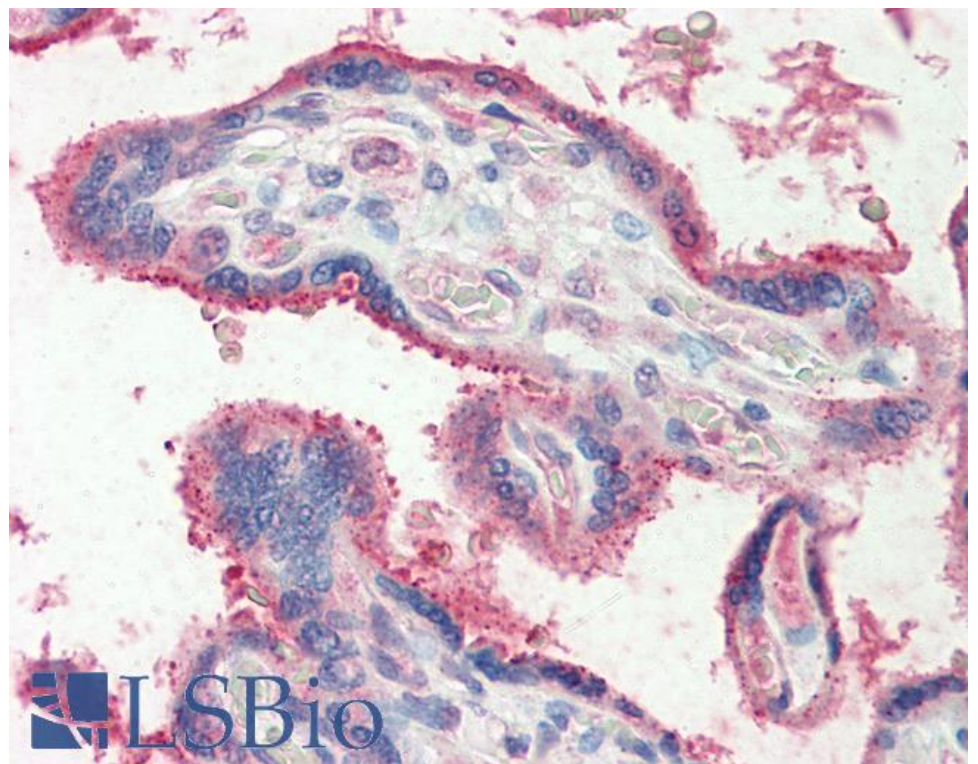
### Species Reactivity

**Tested:** Human

**Expected from sequence similarity:** Human



EB10981 (1 $\mu$ g/ml) staining of Human Liver lysate (35 $\mu$ g protein in RIPA buffer). Detected by chemiluminescence.



EB10981 (5 $\mu$ g/ml) staining of paraffin embedded Human Placenta. Steamed antigen retrieval with citrate buffer pH 6, AP-staining.