

UK Office

Everest Biotech Ltd

Cherwell Innovation Centre
77 Heyford Park
Upper Heyford
Oxfordshire
OX25 5HD
UK

Enquiries:

info@everestbiotech.com

Sales:

sales@everestbiotech.com

Tech support:

support@everestbiotech.com

Tel: +44 (0)1869 238326

www.everestbiotech.com

**Research Use Only. Not for
diagnostic or therapeutic use.**

EB08896 - Goat Anti-FURIN / PCSK3 Antibody

Size: 100µg specific antibody in 200µl



Target Protein

Principal Names: FURIN, furin (paired basic amino acid cleaving enzyme), FUR, PACE, PCSK3, SPC1, FES upstream region, dibasic processing enzyme, furin, furin, membrane associated receptor protein, paired basic amino acid cleaving enzyme (furin, membrane associated receptor protein), proprotein convertase subtilisin/kexin type 3

Official Symbol: FURIN

Accession Number(s): NP_002560.1

Human GeneID(s): [5045](#)

Immunogen

Peptide with sequence C-RTKRDVYQEPTDP, from the internal region of the protein sequence according to NP_002560.1.

Please note the [peptide](#) is available for sale.

Purification and Storage

Purified from goat serum by ammonium sulphate precipitation followed by antigen affinity chromatography using the immunizing peptide.

Supplied at 0.5 mg/ml in Tris saline, 0.02% sodium azide, pH7.3 with 0.5% bovine serum albumin.

Aliquot and store at -20°C. Minimize freezing and thawing.

Applications Tested

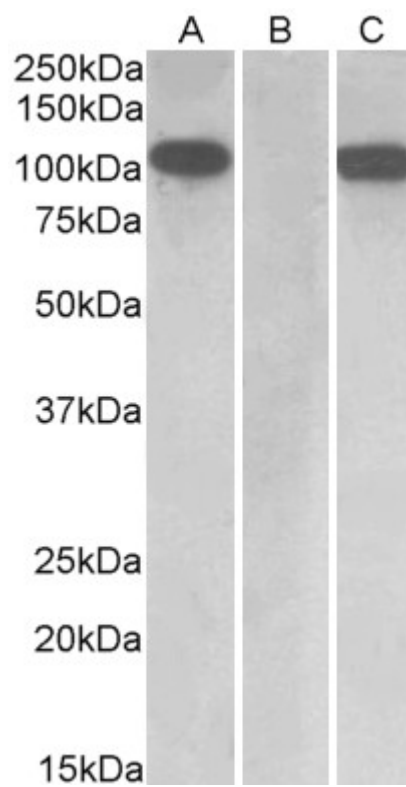
Peptide ELISA: antibody detection limit dilution 1:8000.

Western blot: In transfected HEK293 transiently expressing Human Furin (myc and DYKDDDDK tagged), a band of approx. 110kDa is observed. No bands are observed in mock-transfected HEK293 and the same band is observed using anti-myc antibody. Recommended concentration, 0.5-1µg/ml.

Species Reactivity

Tested: Human

Expected from sequence similarity: Human, Mouse, Rat



HEK293 lysate (10ug protein in RIPA buffer) overexpressing Human Furin with C-terminal MYC tag probed with EB08896 (1ug/ml) in Lane A and probed with anti-MYC Tag (1/1000) in lane C. Mock-transfected HEK293 probed with EB08896 (1ug/ml) in Lane B. Primary incubations were for 1 hour. Detected by chemiluminescence.