

UK Office

Everest Biotech Ltd

Cherwell Innovation Centre
77 Heyford Park
Upper Heyford
Oxfordshire
OX25 5HD
UK

Enquiries:

info@everestbiotech.com

Sales:

sales@everestbiotech.com

Tech support:

support@everestbiotech.com

Tel: +44 (0)1869 238326

www.everestbiotech.com

**Research Use Only. Not for
diagnostic or therapeutic use.**

EB11525 - Goat Anti-Furin (aa553-565) Antibody

Size: 100µg specific antibody in 200µl



Target Protein

Principal Names: dibasic processing enzyme, dibasic-processing enzyme, FES upstream region, FUR, FURIN, furin (paired basic amino acid cleaving enzyme), furin, membrane associated receptor protein, OTTHUMP00000194747, PACE, paired basic amino acid residue-cleaving enzyme, PCSK3, proprotein convertase subtilisin/kexin type 3, SPC1

Official Symbol: FURIN

Accession Number(s): NP_002560.1

Human GeneID(s): [5045](#)

Non-Human GeneID(s): 18550 (mouse), 54281 (rat)

Immunogen

Peptide with sequence C-NTSEANNYGTLTK, from the internal region of the protein sequence according to NP_002560.1.

Please note the [peptide](#) is available for sale.

Purification and Storage

Purified from goat serum by ammonium sulphate precipitation followed by antigen affinity chromatography using the immunizing peptide.

Supplied at 0.5 mg/ml in Tris saline, 0.02% sodium azide, pH7.3 with 0.5% bovine serum albumin.

Aliquot and store at -20°C. Minimize freezing and thawing.

Applications Tested

Peptide ELISA: antibody detection limit dilution 1:8000.

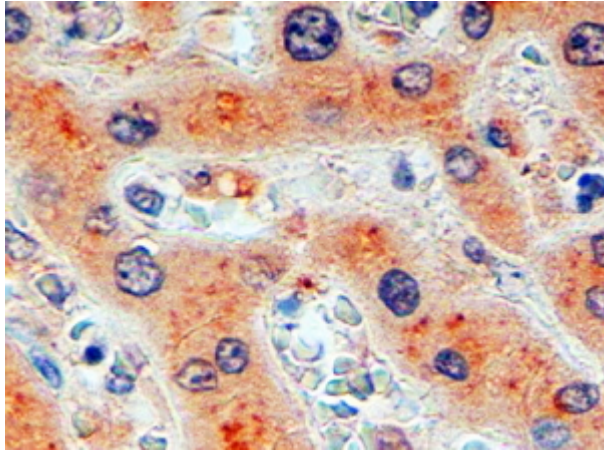
Western blot: This antibody is proven unfit for Western blot.

IHC: In paraffin embedded Human Liver shows Golgi-like staining in the hepatocytes. Recommended concentration, 2-4µg/ml.

Species Reactivity

Tested: Human

Expected from sequence similarity: Human, Mouse, Rat, Dog, Pig, Cow



EB11525 (2µg/ml) staining of paraffin embedded Human Liver. Steamed antigen retrieval with citrate buffer pH 6, HRP-staining.