

## UK Office

### Everest Biotech Ltd

Cherwell Innovation Centre  
77 Heyford Park  
Upper Heyford  
Oxfordshire  
OX25 5HD  
UK

Enquiries:

[info@everestbiotech.com](mailto:info@everestbiotech.com)

Sales:

[sales@everestbiotech.com](mailto:sales@everestbiotech.com)

Tech support:

[support@everestbiotech.com](mailto:support@everestbiotech.com)

Tel: +44 (0)1869 238326

[www.everestbiotech.com](http://www.everestbiotech.com)

**Research Use Only. Not for  
diagnostic or therapeutic use.**

## EB07874 - Goat Anti-Fumarase / FH Antibody

Size: 100µg specific antibody in 200µl



### Target Protein

**Principal Names:** fumarate hydratase, HLRCC, LRCC, MCL, MCUL1, fumarase, FH, FMRD

**Official Symbol:** FH

**Accession Number(s):** NP\_000134.2

**Human GeneID(s):** [2271](#)

**Non-Human GeneID(s):** 14194 (mouse), 24368 (rat)

### Immunogen

Peptide with sequence C-HPNDHVNKSQSSND, from the internal region of the protein sequence according to NP\_000134.2.

Please note the [peptide](#) is available for sale.

### Purification and Storage

Purified from goat serum by ammonium sulphate precipitation followed by antigen affinity chromatography using the immunizing peptide.

Supplied at 0.5 mg/ml in Tris saline, 0.02% sodium azide, pH7.3 with 0.5% bovine serum albumin.

Aliquot and store at -20°C. Minimize freezing and thawing.

### Applications Tested

**Peptide ELISA:** antibody detection limit dilution 1:64000.

**Western blot:** Approx 48kDa band observed in Human Kidney, Liver and Lung lysates (calculated MW of 54.6kDa according to NP\_000134.2). The observed molecular weight corresponds to earlier findings with antibodies from different sources. In transfected HEK293 transiently expressing Fumarase a band of approx. 55kDa is observed. This band is not observed in the non-transfected HEK293. Recommended concentration: 0.01-0.03µg/ml.

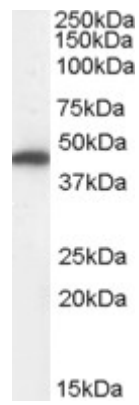
**IHC:** Paraffin embedded Human Skeletal Muscle and Heart. Recommended concentration: 3.75µg/ml.

**Enzyme immunoassay:** Sandwich-type ELISA with increasing amount of recombinant Fumarase captured by a rabbit antibody. Recommended reporter concentration: 1-2ug/ml

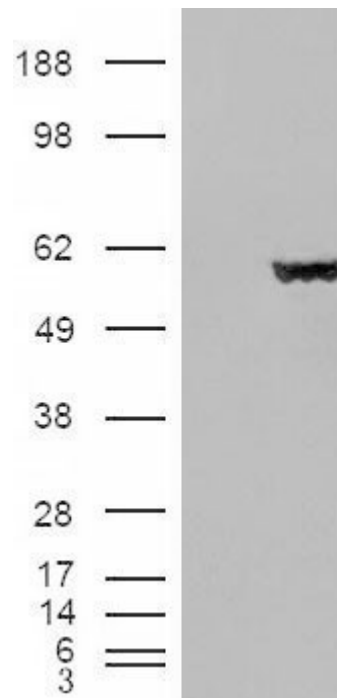
### Species Reactivity

**Tested:** Human

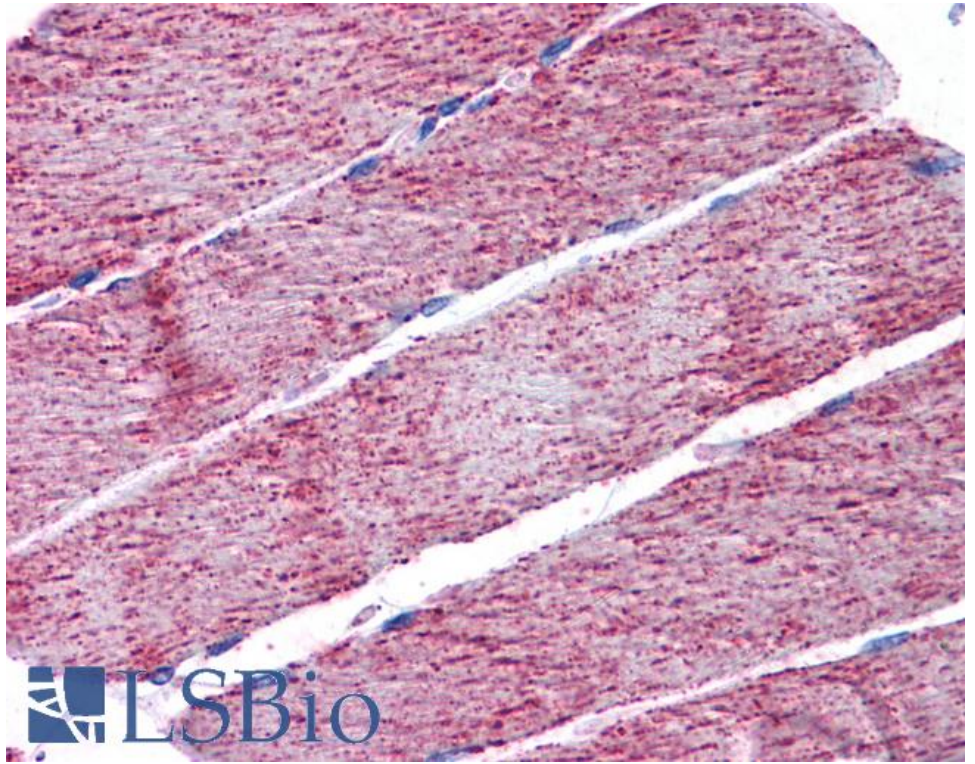
**Expected from sequence similarity:** Human, Mouse, Rat, Dog



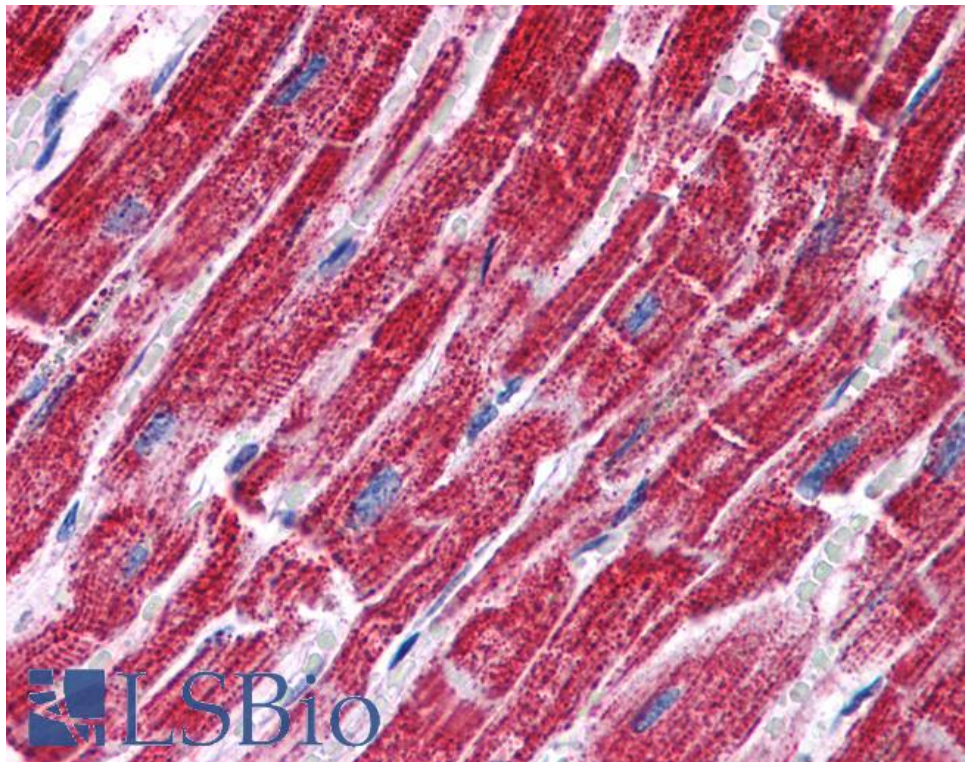
EB07874 (0.01µg/ml) staining of Human Kidney lysate (35µg protein in RIPA buffer). Primary incubation was 1 hour. Detected by chemiluminescence.



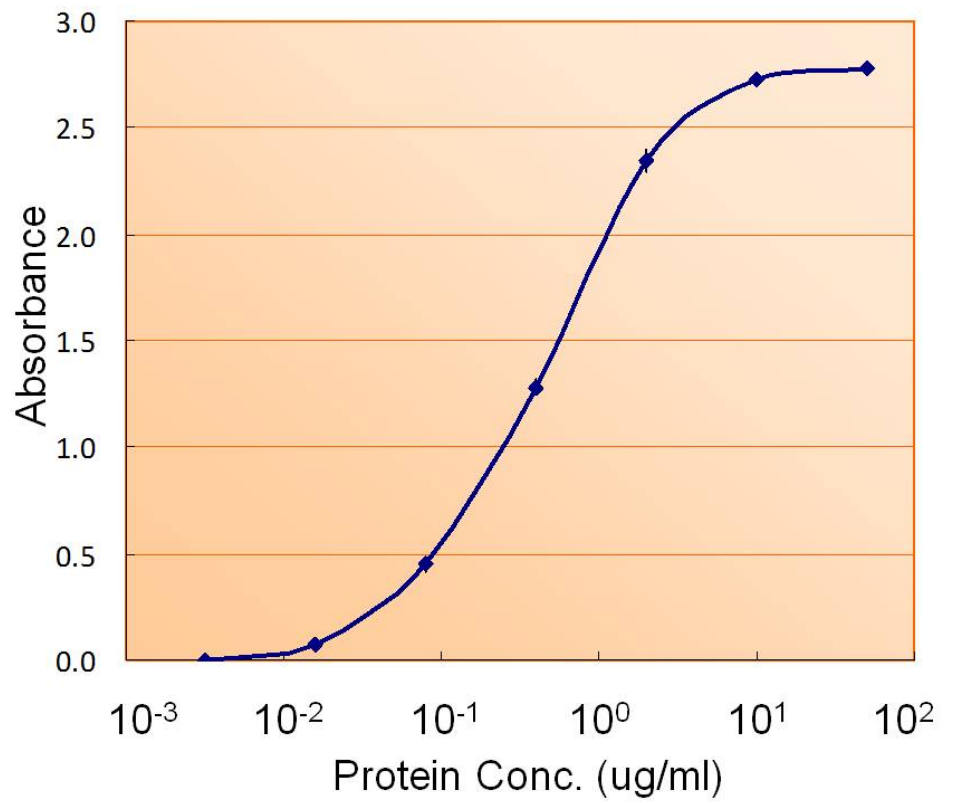
HEK293 overexpressing Fumarase (RC200614) and probed with EB07874 (mock transfection in first lane), tested by Origene.



EB07874 (3.75µg/ml) staining of paraffin embedded Human Skeletal Muscle. Steamed antigen retrieval with citrate buffer pH 6, AP-staining.



EB07874 (3.75µg/ml) staining of paraffin embedded Human Heart. Steamed antigen retrieval with citrate buffer pH 6, AP-staining.



EB7874 (1.5ug/ml) as the reporter with EB002023 as the capture rabbit antibody (2ug/ml).