

UK Office

Everest Biotech Ltd

Cherwell Innovation Centre
77 Heyford Park
Upper Heyford
Oxfordshire
OX25 5HD
UK

Enquiries:

info@everestbiotech.com

Sales:

sales@everestbiotech.com

Tech support:

support@everestbiotech.com

Tel: +44 (0)1869 238326

www.everestbiotech.com

**Research Use Only. Not for
diagnostic or therapeutic use.**

EB07279 - Goat Anti-FRA1 / FOSL1 Antibody

Size: 100µg specific antibody in 200µl



Target Protein

Principal Names: FOSL1, FRA1, FOS-like antigen 1, HGNC:13718, fra-1, FOS-like antigen-1

Official Symbol: FOSL1

Accession Number(s): NP_005429.1

Human GeneID(s): [8061](#)

Non-Human GeneID(s): 14283 (mouse), 25445 (rat)

Important Comments: No cross-reactivity is expected with V-FOS.

Immunogen

Peptide with sequence C-QREIEELQKQKER, from the internal region of the protein sequence according to NP_005429.1.

Please note the [peptide](#) is available for sale.

Purification and Storage

Purified from goat serum by ammonium sulphate precipitation followed by antigen affinity chromatography using the immunizing peptide.

Supplied at 0.5 mg/ml in Tris saline, 0.02% sodium azide, pH7.3 with 0.5% bovine serum albumin.

Aliquot and store at -20°C. Minimize freezing and thawing.

Applications Tested

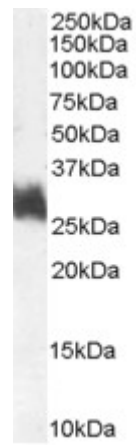
Peptide ELISA: antibody detection limit dilution 1:1000.

Western blot: Approx 26-28kDa band observed in Human Bone Marrow, Breast and Placenta lysates (calculated MW of 29.4kDa according to NP_005429.1). Recommended concentration: 0.1-0.3µg/ml.

Species Reactivity

Tested: Human

Expected from sequence similarity: Human, Mouse, Rat, Dog, Pig, Cow



EB07279 (1µg/ml) staining of Human Bone Marrow lysate (35µg protein in RIPA buffer). Primary incubation was 1 hour. Detected by chemiluminescence.