

## UK Office

### Everest Biotech Ltd

Cherwell Innovation Centre  
77 Heyford Park  
Upper Heyford  
Oxfordshire  
OX25 5HD  
UK

Enquiries:

[info@everestbiotech.com](mailto:info@everestbiotech.com)

Sales:

[sales@everestbiotech.com](mailto:sales@everestbiotech.com)

Tech support:

[support@everestbiotech.com](mailto:support@everestbiotech.com)

Tel: +44 (0)1869 238326

[www.everestbiotech.com](http://www.everestbiotech.com)

**Research Use Only. Not for  
diagnostic or therapeutic use.**

## EB05226 - Goat Anti-FOXP2 (C terminus) Antibody

Size: 100µg specific antibody in 200µl



### Target Protein

**Principal Names:** FOXP2, forkhead box P2, SPCH1, CAGH44, TNRC10, CAG repeat protein 44, speech and language disorder 1, trinucleotide repeat containing 10, forkhead/winged-helix transcription factor, DKFZp686H1726, OTTHUMP00000196932

**Official Symbol:** FOXP2

**Accession Number(s):** NP\_055306.1; NP\_683696.2; NP\_683697.1

**Human GeneID(s):** [93986](#)

**Important Comments:** This antibody is expected to recognise all three reported isoforms (NP\_055306.1; NP\_683696.2; NP\_683697.1).

### Immunogen

Peptide with sequence C-REIEEEPLSEDL, from the C Terminus of the protein sequence according to NP\_055306.1; NP\_683696.2; NP\_683697.1.

Please note the [peptide](#) is available for sale.

### Purification and Storage

Purified from goat serum by ammonium sulphate precipitation followed by antigen affinity chromatography using the immunizing peptide.

Supplied at 0.5 mg/ml in Tris saline, 0.02% sodium azide, pH7.3 with 0.5% bovine serum albumin.

Aliquot and store at -20°C. Minimize freezing and thawing.

### Applications Tested

**Peptide ELISA:** antibody detection limit dilution 1:128000.

**Western blot:** Approx 80kDa band observed in Human Brain (Cerebellum) lysate (calculated MW of 79.9kDa according to NP\_055306.1). Recommended concentration: 0.5-1.5µg/ml. Primary incubation was 1 hour. Preliminary testing was unsuccessful on Mouse and Rat for this particular batch.

### Species Reactivity

**Tested:** Human

**Expected from sequence similarity:** Human, Mouse, Rat, Dog, Pig, Cow

### Specific References

**This antibody (previous batch) has been successfully used in IHC on Human and Mouse:**

Haldipur P, Dang D, Aldinger KA, Janson OK, Guimiot F, Adle-Biasette H, Dobyns WB, Siebert JR, Russo R, Millen KJ.

Phenotypic outcomes in Mouse and Human Foxc1 dependent Dandy-Walker cerebellar malformation suggest shared mechanisms.

Elife. 2017 Jan 16;6. pii: e20898. doi: 10.7554/eLife.20898.

PMID: 28092268

**This antibody (previous batch) has been successfully used in IHC on Mouse:**

Fujita H, Sugihara I.

FoxP2 expression in the cerebellum and inferior olive: Development of the transverse stripe-shaped expression pattern in the mouse cerebellar cortex.

J Comp Neurol. 2012 Feb 15;520(3):656-77. doi: 10.1002/cne.22760.

PMID: 21935935

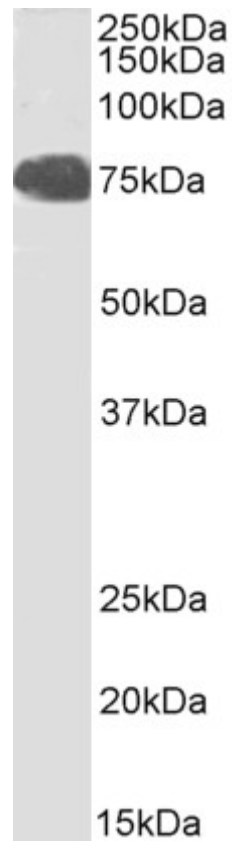
**This antibody (previous batch) has been successfully used in IHC on Mouse:**

Fujita H, Morita N, Furuichi T, Sugihara I.

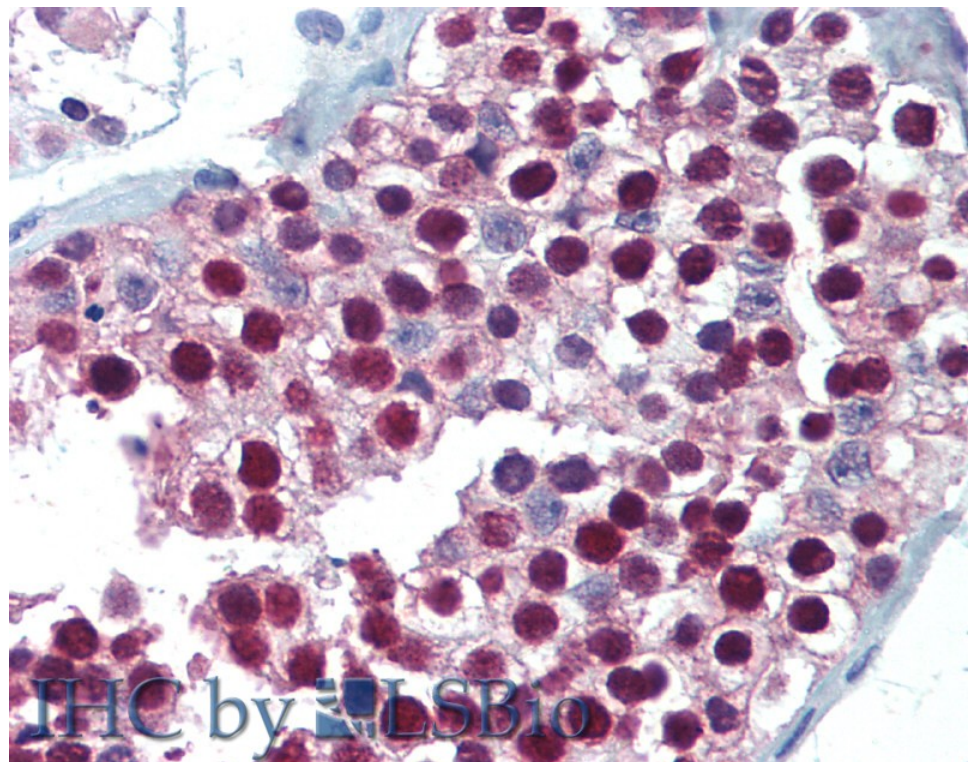
Clustered fine compartmentalization of the mouse embryonic cerebellar cortex and its rearrangement into the postnatal striped configuration.

J Neurosci. 2012 Nov 7;32(45):15688-703.

PMID: 23136409



EB05226 (1µg/ml) staining of Human Cerebellum lysate (35µg protein in RIPA buffer). Detected by chemiluminescence.



EB05226 (5µg/ml) staining of paraffin embedded Human Testis. Steamed antigen retrieval with citrate buffer pH 6, AP-staining. **This data is from a previous batch, not on sale.**