

## UK Office

### Everest Biotech Ltd

Cherwell Innovation Centre  
77 Heyford Park  
Upper Heyford  
Oxfordshire  
OX25 5HD  
UK

Enquiries:

[info@everestbiotech.com](mailto:info@everestbiotech.com)

Sales:

[sales@everestbiotech.com](mailto:sales@everestbiotech.com)

Tech support:

[support@everestbiotech.com](mailto:support@everestbiotech.com)

Tel: +44 (0)1869 238326

[www.everestbiotech.com](http://www.everestbiotech.com)

**Research Use Only. Not for  
diagnostic or therapeutic use.**

## EB06022 - Goat Anti-FOXL2 / BPES Antibody

Size: 100µg specific antibody in 200µl



### Target Protein

**Principal Names:** FOXL2, BPES, forkhead box L2, PFRK, BPES1, PINTO, forkhead transcription factor FOXL2, blepharophimosis, epicanthus inversus and ptosis, Blepharophimosis, epicanthus inversus, and ptosis 1, POF3

**Official Symbol:** FOXL2

**Accession Number(s):** NP\_075555.1

**Human GeneID(s):** [668](#)

**Non-Human GeneID(s):** 26927 (mouse)

### Immunogen

Peptide with sequence C-DSKTGALHSRLDL, from the C Terminus of the protein sequence according to NP\_075555.1.

Please note the [peptide](#) is available for sale.

### Purification and Storage

Purified from goat serum by ammonium sulphate precipitation followed by antigen affinity chromatography using the immunizing peptide.

Supplied at 0.5 mg/ml in Tris saline, 0.02% sodium azide, pH7.3 with 0.5% bovine serum albumin.

Aliquot and store at -20°C. Minimize freezing and thawing.

### Applications Tested

**Peptide ELISA:** antibody detection limit dilution 1:32000.

**Western blot:** Approx 50kDa band observed in Human and Mouse Ovary lysates (calculated MW of 38.8kDa according to Human NP\_075555.1 and 38.9kDa according to Mouse NP\_036150.1). The observed molecular weight corresponds to earlier findings with different antibodies from other commercial sources. Recommended concentration 0.3-1µg/ml. Primary incubation was 1 hour. Preliminary testing was unsuccessful on Rat Ovary for this particular batch.

**IHC:** In paraffin embedded Human Ovary shows nuclear staining in select cells. Recommended concentration: 2-4µg/ml. Paraffin embedded Human Adrenal Gland. Recommended concentration: 5µg/ml.

### Species Reactivity

**Tested:** Human, Mouse

**Expected from sequence similarity:** Human, Mouse, Rat, Cow

### Specific Reference

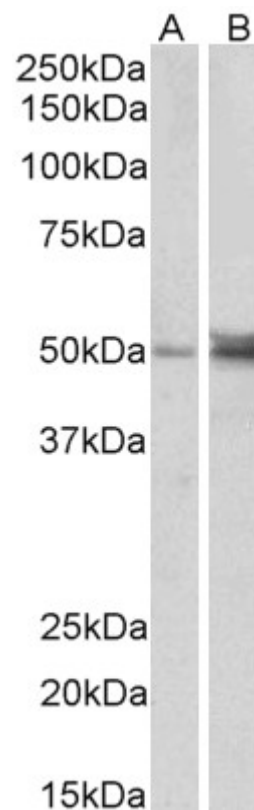
**This antibody has been successfully used in IHC and IF on Mouse:**

Padua MB, Fox SC, Jiang T, Morse DA, Tevosian SG.

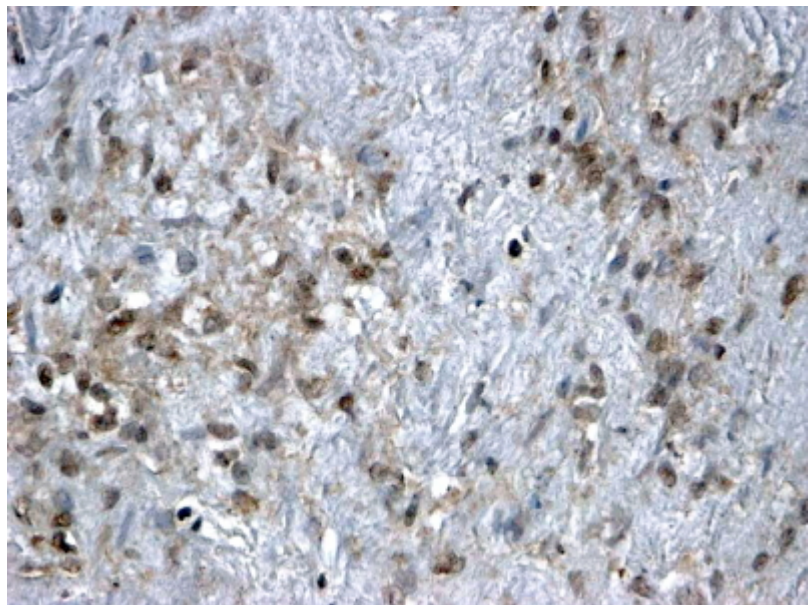
Simultaneous Gene Deletion of Gata4 and Gata6 Leads to Early Disruption of Follicular Development and Germ Cell Loss in the Murine Ovary.

Biol Reprod. 2014 Jun 4.

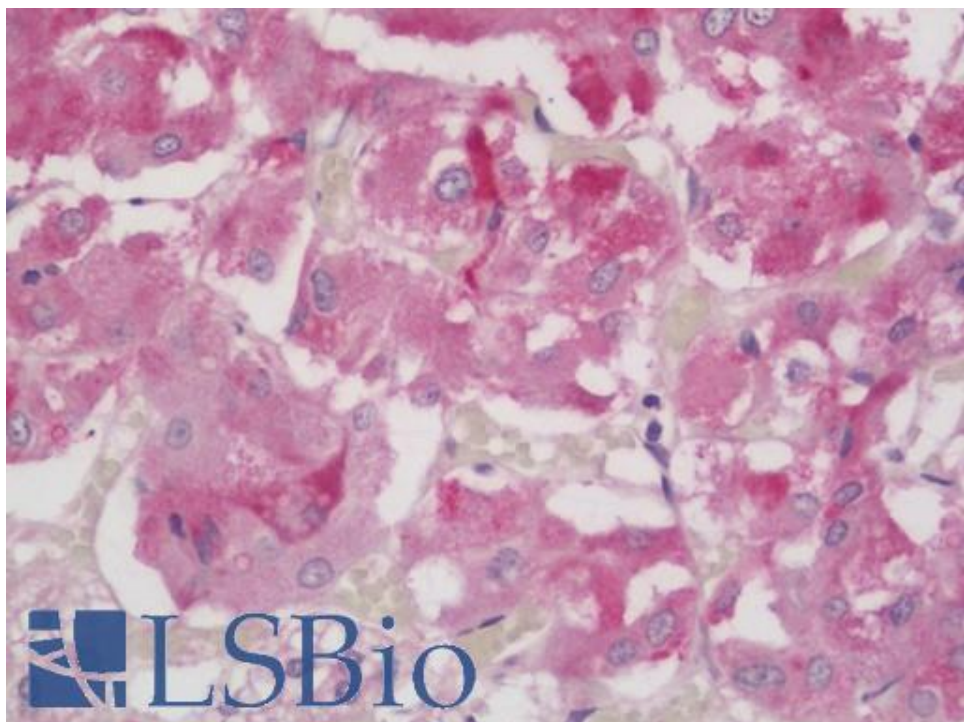
PMID: 24899573



EB06022 (1 $\mu$ g/ml) staining of Human (A) and Mouse (B) Ovary lysate (35 $\mu$ g protein in RIPA buffer). Detected by chemiluminescence.



EB06022 (2 $\mu$ g/ml) staining of paraffin embedded Human Ovary. Steamed antigen retrieval with citrate buffer pH 6, HRP-staining.



EB06022 (5µg/ml) staining of paraffin embedded Human Adrenal Gland. Steamed antigen retrieval with citrate buffer pH 6, AP-staining.