

## UK Office

### Everest Biotech Ltd

Cherwell Innovation Centre  
77 Heyford Park  
Upper Heyford  
Oxfordshire  
OX25 5HD  
UK

Enquiries:

[info@everestbiotech.com](mailto:info@everestbiotech.com)

Sales:

[sales@everestbiotech.com](mailto:sales@everestbiotech.com)

Tech support:

[support@everestbiotech.com](mailto:support@everestbiotech.com)

Tel: +44 (0)1869 238326

[www.everestbiotech.com](http://www.everestbiotech.com)

**Research Use Only. Not for  
diagnostic or therapeutic use.**

## EB06019 - Goat Anti-FOXI1 / FKHL10 Antibody

Size: 100µg specific antibody in 200µl



### Target Protein

**Principal Names:** FOXI1, forkhead box I1, HFH3, FKHL10, FREAC6, HNF-3/fork-head homolog-3, forkhead-related activator 6, forkhead (Drosophila)-like 10, Forkhead, drosophila, homolog-like 10, hepatocyte nuclear factor 3 forkhead homolog 3, FKHL10, MGC34197, forkhead-like 10

**Official Symbol:** FOXI1

**Accession Number(s):** NP\_036320.2; NP\_658982.1

**Human GeneID(s):** [2299](#)

**Important Comments:** This antibody is expected to recognise both reported human isoforms (NP\_036320.2; NP\_658982.1).

### Immunogen

Peptide with sequence C-TSGVLYPREGTEV, from the C Terminus of the protein sequence according to NP\_036320.2; NP\_658982.1.

Please note the [peptide](#) is available for sale.

### Purification and Storage

Purified from goat serum by ammonium sulphate precipitation followed by antigen affinity chromatography using the immunizing peptide.

Supplied at 0.5 mg/ml in Tris saline, 0.02% sodium azide, pH7.3 with 0.5% bovine serum albumin.

Aliquot and store at -20°C. Minimize freezing and thawing.

### Applications Tested

**Peptide ELISA:** antibody detection limit dilution 1:32000.

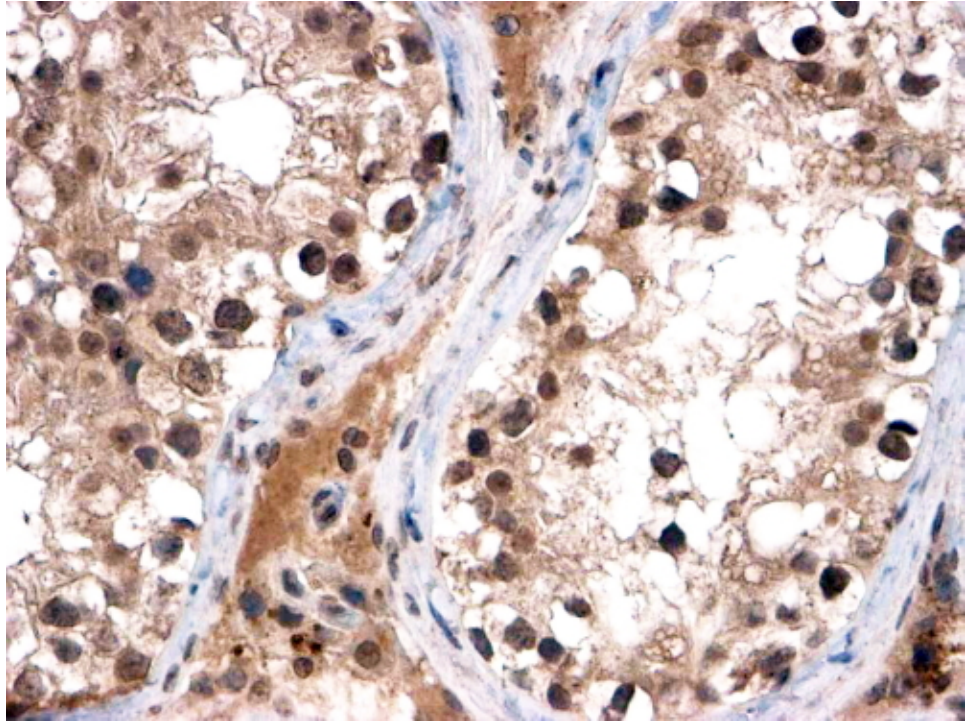
**Western blot:** Preliminary experiments gave bands at approx 50 kDa and 25 kDa in Human Kidney lysate after 1 µg/ml antibody staining. Please note that currently we cannot find an explanation in the literature for the bands we observe given the predicted sizes of 41.0kDa according to NP\_036320.2 (isoform a) and 30.8kDa according to NP\_658982.1 (isoform b). The bands were successfully blocked by incubation with the immunizing peptide.

**IHC:** In paraffin embedded Human Testis shows primarily nuclear staining in the primary spermatocytes. Recommended concentration: 2-4 µg/ml. This product has been successfully used in Mouse Epididymus by a customer.

### Species Reactivity

**Tested:** Human, Mouse

**Expected from sequence similarity:** Human



EB06019 (2µg/ml) staining of paraffin embedded Human Testis. Steamed antigen retrieval with citrate buffer pH 6, HRP-staining.