



UK Office

Everest Biotech Ltd

Cherwell Innovation Centre
77 Heyford Park
Upper Heyford
Oxfordshire
OX25 5HD
UK

Enquiries:

info@everestbiotech.com

Sales:

sales@everestbiotech.com

Tech support:

support@everestbiotech.com

Tel: +44 (0)1869 238326

www.everestbiotech.com

**Research Use Only. Not for
diagnostic or therapeutic use.**

EB06008 - Goat Anti-FOXD1 / FREAC4 / FKHL8 Antibody

Size: 100µg specific antibody in 200µl



Target Protein

Principal Names: FOXD1, forkhead box D1, FKHL8, FREAC4, forkhead (Drosophila)-like 8, forkhead-related activator 4, Forkhead, drosophila, homolog-like 8, forkhead-like 8

Official Symbol: FOXD1

Accession Number(s): NP_004463.1

Human GeneID(s): [2297](#)

Non-Human GeneID(s): 15229 (mouse)

Immunogen

Peptide with sequence SSVENFTARISNC, from the C Terminus of the protein sequence according to NP_004463.1.

Please note the [peptide](#) is available for sale.

Purification and Storage

Purified from goat serum by ammonium sulphate precipitation followed by antigen affinity chromatography using the immunizing peptide.

Supplied at 0.5 mg/ml in Tris saline, 0.02% sodium azide, pH7.3 with 0.5% bovine serum albumin.

Aliquot and store at -20°C. Minimize freezing and thawing.

Applications Tested

Peptide ELISA: antibody detection limit dilution 1:16000.

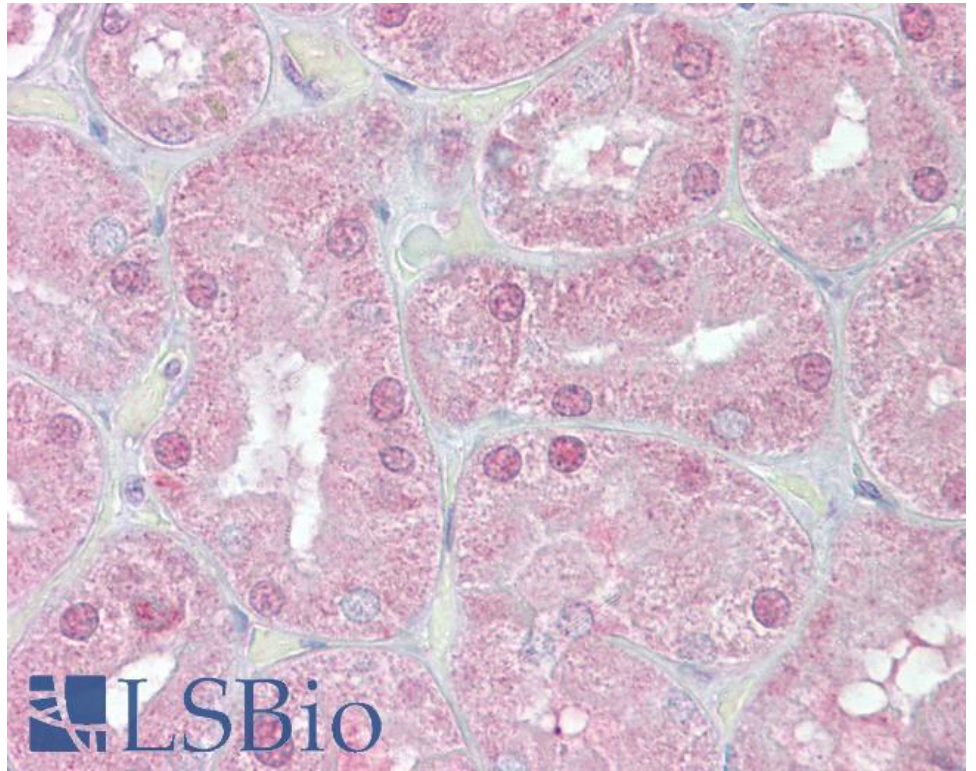
Western blot: No signal obtained yet but low background observed in Human Kidney extracts at up to 1µg/ml.

IHC: Paraffin embedded Human Kidney. Recommended concentration: 2.5µg/ml.

Species Reactivity

Tested: Human

Expected from sequence similarity: Human, Mouse, Rat



EB06008 (2.5µg/ml) staining of paraffin embedded Human Kidney. Steamed antigen retrieval with citrate buffer pH 6, AP-staining.