

UK Office

Everest Biotech Ltd

Cherwell Innovation Centre
77 Heyford Park
Upper Heyford
Oxfordshire
OX25 5HD
UK

Enquiries:

info@everestbiotech.com

Sales:

sales@everestbiotech.com

Tech support:

support@everestbiotech.com

Tel: +44 (0)1869 238326

www.everestbiotech.com

**Research Use Only. Not for
diagnostic or therapeutic use.**

EB06006-T - Goat Anti-FOXC1 (C Term) Antibody - Trial

Size: 20µg specific antibody in 40µl



Target Protein

Principal Names: FOXC1, forkhead box C1, ARA, IGDA, IHG1, FKHL7, IRID1, FREAC3, iridogoniodysgenesis type 1, forkhead (Drosophila)-like 7, forkhead-related activator 3, Forkhead, drosophila, homolog-like 7, FREAC-3, RIEG3, forkhead/winged helix-like transcription factor 7, myeloid factor-delta

Official Symbol: FOXC1

Accession Number(s): NP_001444.2

Human GeneID(s): [2296](#)

Non-Human GeneID(s): 17300 (mouse)

Immunogen

Peptide with sequence RTSGAFVYDCSKF, from the C Terminus of the protein sequence according to NP_001444.2.

Please note the [peptide](#) is available for sale.

Purification and Storage

Purified from goat serum by ammonium sulphate precipitation followed by antigen affinity chromatography using the immunizing peptide.

Supplied at 0.5 mg/ml in Tris saline, 0.02% sodium azide, pH7.3 with 0.5% bovine serum albumin.

Aliquot and store at -20°C. Minimize freezing and thawing.

Applications Tested

Peptide ELISA: antibody detection limit dilution 1:32000.

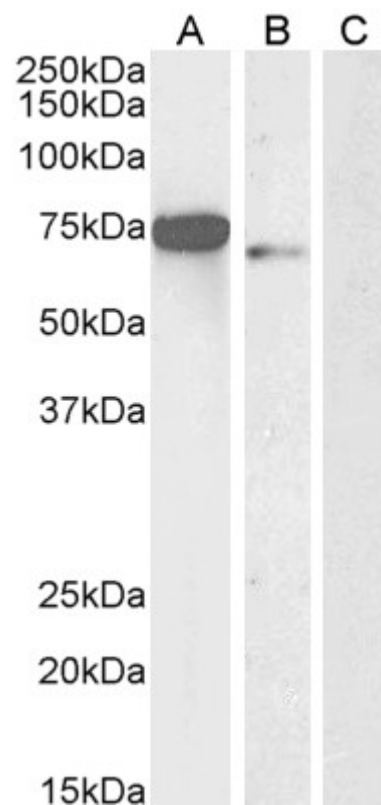
Western blot: Approx 70-75kDa band observed in lysates of cell lines HEK293 and nuclear MCF7 (calculated MW of 56.8kDa according to NP_001444.2). The observed molecular weight corresponds to earlier findings with different antibodies from other commercial sources. Recommended concentration: 0.3-1ug/ul. Primary incubation 1 hour at room temperature. **Negative Control:** Daudi cell lysate.

Flow Cytometry: Flow cytometric analysis of HEK293 cells. Recommended concentration: 10ug/ml. **Chromatin immunoprecipitation:** Customer successfully used this antibody in ChIP from human cell line. **This data is from a previous batch, not on sale.**

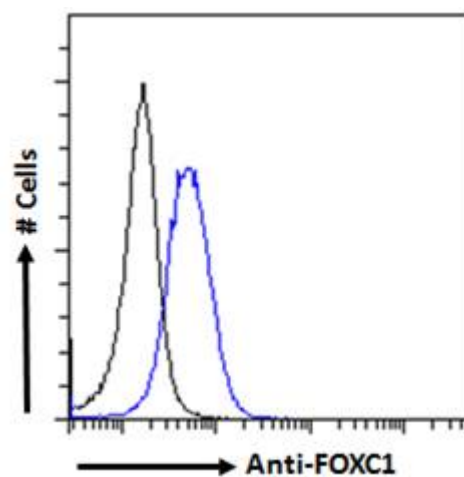
Species Reactivity

Tested: Human

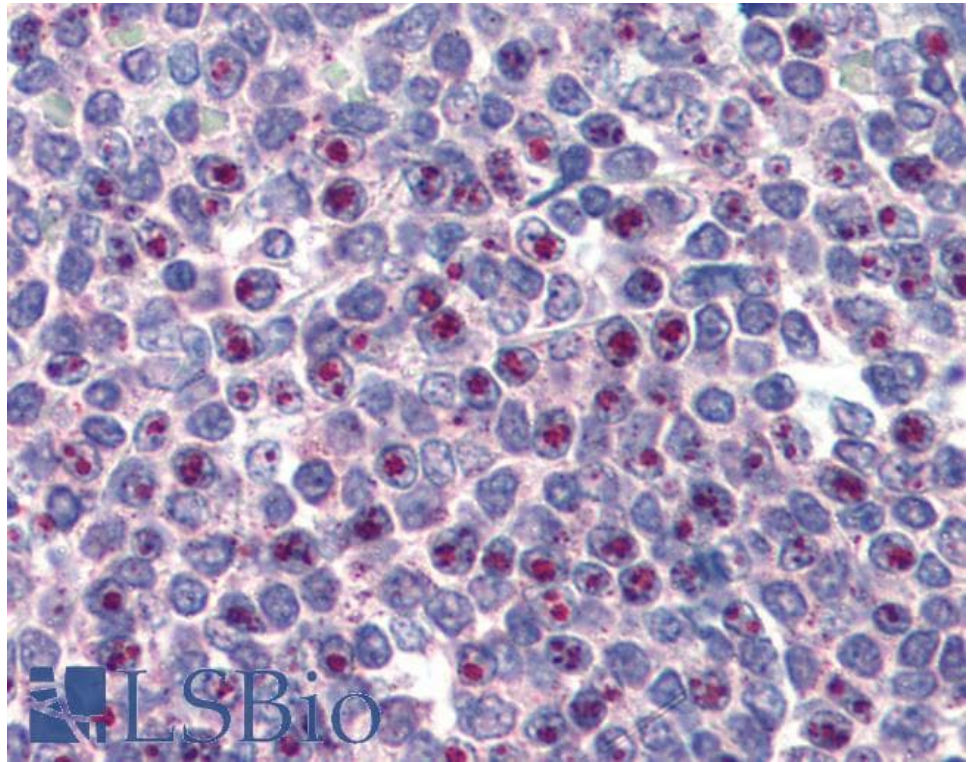
Expected from sequence similarity: Human, Mouse, Rat



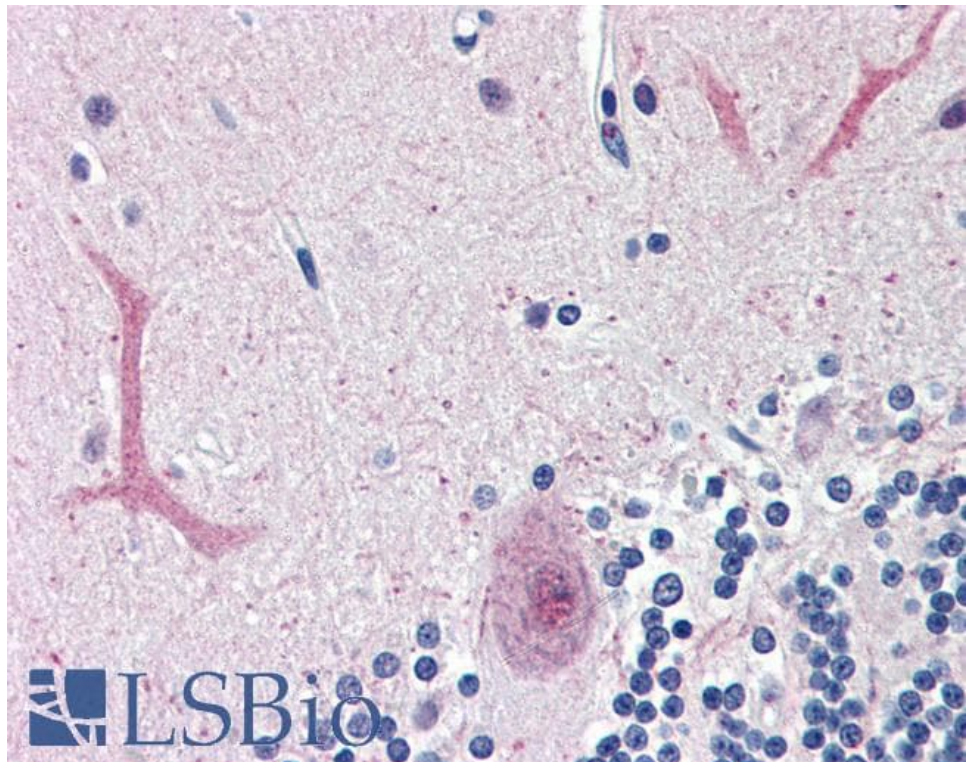
EB06006 (0.3 μ g/ml) staining of HEK293 (A) Nuclear MCF7 (B) and Negative control Daudi (C) cell lysate (35 μ g protein in RIPA buffer). Detected by chemiluminescence.



EB06006 Flow cytometric analysis of paraformaldehyde fixed HEK293 cells (blue line), permeabilized with 0.5% Triton. Primary incubation 1hr (10 μ g/ml) followed by Alexa Fluor 488 secondary antibody (2 μ g/ml). IgG control: Unimmunized goat IgG (black line) followed by Alexa Fluor 488 secondary antibody.



EB06006 (3.75µg/ml) staining of paraffin embedded Human Spleen. Steamed antigen retrieval with citrate buffer pH 6, AP-staining. **This data is from a previous batch, not on sale.**



EB06006 (3.75µg/ml) staining of paraffin embedded Human Cerebellum. Steamed antigen retrieval with citrate buffer pH 6, AP-staining. **This data is from a previous batch, not on sale.**