



## UK Office

### Everest Biotech Ltd

Cherwell Innovation Centre  
77 Heyford Park  
Upper Heyford  
Oxfordshire  
OX25 5HD  
UK

Enquiries:

[info@everestbiotech.com](mailto:info@everestbiotech.com)

Sales:

[sales@everestbiotech.com](mailto:sales@everestbiotech.com)

Tech support:

[support@everestbiotech.com](mailto:support@everestbiotech.com)

Tel: +44 (0)1869 238326

[www.everestbiotech.com](http://www.everestbiotech.com)

**Research Use Only. Not for  
diagnostic or therapeutic use.**

## EB05999-T - Goat Anti-FOXA1 / HNF3A Antibody - Trial

Size: 20µg specific antibody in 40µl



### Target Protein

**Principal Names:** FOXA1, HNF3A, forkhead box A1, TCF3A, MGC33105, hepatocyte nuclear factor 3, alpha

**Official Symbol:** FOXA1

**Accession Number(s):** NP\_004487.2

**Human GeneID(s):** [3169](#)

**Non-Human GeneID(s):** 15375 (mouse), 25098 (rat)

### Immunogen

Peptide with sequence C-GVYSRPVLNTS, from the C Terminus of the protein sequence according to NP\_004487.2.

Please note the [peptide](#) is available for sale.

### Purification and Storage

Purified from goat serum by ammonium sulphate precipitation followed by antigen affinity chromatography using the immunizing peptide.

Supplied at 0.5 mg/ml in Tris saline, 0.02% sodium azide, pH7.3 with 0.5% bovine serum albumin.

Aliquot and store at -20°C. Minimize freezing and thawing.

### Applications Tested

**Peptide ELISA:** antibody detection limit dilution 1:64000.

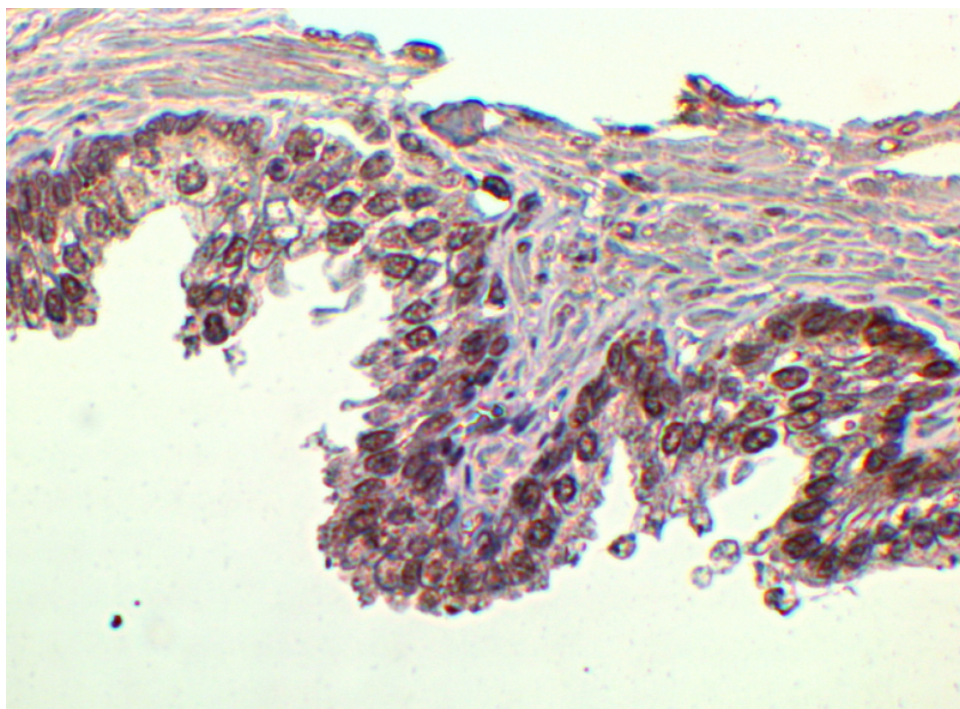
**IHC:** In paraffin embedded Human Prostate shows preferential nuclear staining in the epithelial cells. Recommended concentration: 2-4µg/ml. Paraffin embedded Human Breast. Recommended concentration: 5µg/ml.

**Chromatin immunoprecipitation:** This antibody has been successfully used for mouse embryonic stem cells and it has been confirmed in ChIP by customers. **This data is from a previous batch, not on sale.**

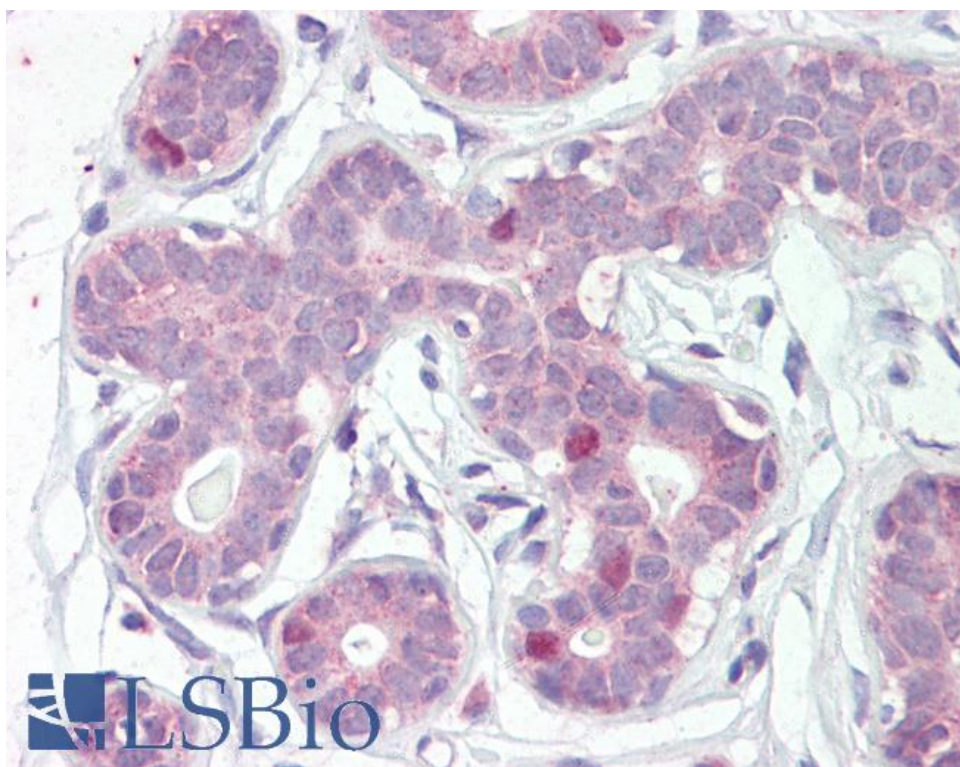
### Species Reactivity

**Tested:** Human

**Expected from sequence similarity:** Human, Mouse, Rat, Pig, Cow



EB05999 (2µg/ml) staining of paraffin embedded Human Prostate. Steamed antigen retrieval with citrate buffer pH 6, HRP-staining.



EB05999 (5µg/ml) staining of paraffin embedded Human Breast. Steamed antigen retrieval with citrate buffer pH 6, AP-staining.