

UK Office

Everest Biotech Ltd

Cherwell Innovation Centre
77 Heyford Park
Upper Heyford
Oxfordshire
OX25 5HD
UK

Enquiries:

info@everestbiotech.com

Sales:

sales@everestbiotech.com

Tech support:

support@everestbiotech.com

Tel: +44 (0)1869 238326

www.everestbiotech.com

**Research Use Only. Not for
diagnostic or therapeutic use.**

EB09652 - Goat Anti-FGL1 / Hepassocin Antibody

Size: 100µg specific antibody in 200µl



Target Protein

Principal Names: FGL1, fibrinogen-like 1, HFREP1, HP-041, LFIRE1, MGC12455, OTTHUMP00000122468, hepassocin, hepatocellular carcinoma-related sequence, hepatocyte-derived fibrinogen-related protein 1

Official Symbol: FGL1

Accession Number(s): NP_004458.3

Human GeneID(s): [2267](#)

Non-Human GeneID(s): 234199 (mouse), 246186 (rat)

Important Comments: Reported variants represent identical protein: NP_963846.1, NP_963847.1, NP_671736.2, NP_004458.3

Immunogen

Peptide with sequence C-ETRVKQQQVKIKQ, from the internal region of the protein sequence according to NP_004458.3.

Please note the [peptide](#) is available for sale.

Purification and Storage

Purified from goat serum by ammonium sulphate precipitation followed by antigen affinity chromatography using the immunizing peptide.

Supplied at 0.5 mg/ml in Tris saline, 0.02% sodium azide, pH7.3 with 0.5% bovine serum albumin.

Aliquot and store at -20°C. Minimize freezing and thawing.

Applications Tested

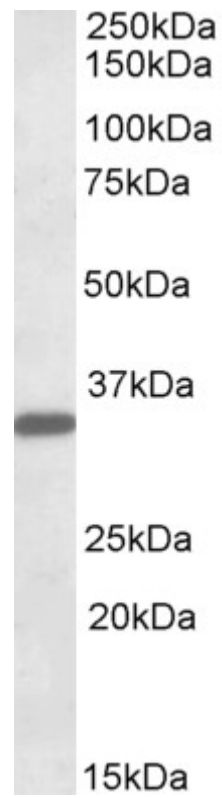
Peptide ELISA: antibody detection limit dilution 1:16000.

Western blot: Approx 35kDa band observed in Human Liver lysates (calculated MW of 36.4kDa according to NP_004458.3). Recommended concentration: 0.1-0.3µg/ml.

Species Reactivity

Tested: Human

Expected from sequence similarity: Human, Mouse, Rat, Dog, Cow



EB09652 (0.1µg/ml) staining of Human Liver lysate (35µg protein in RIPA buffer). Primary incubation was 1 hour.
Detected by chemiluminescence.