

## UK Office

### Everest Biotech Ltd

Cherwell Innovation Centre  
77 Heyford Park  
Upper Heyford  
Oxfordshire  
OX25 5HD  
UK

Enquiries:

[info@everestbiotech.com](mailto:info@everestbiotech.com)

Sales:

[sales@everestbiotech.com](mailto:sales@everestbiotech.com)

Tech support:

[support@everestbiotech.com](mailto:support@everestbiotech.com)

Tel: +44 (0)1869 238326

[www.everestbiotech.com](http://www.everestbiotech.com)

**Research Use Only. Not for  
diagnostic or therapeutic use.**

## EB05044 - Goat Anti-FEM1C Antibody

Size: 100µg specific antibody in 200µl



### Target Protein

**Principal Names:** FEM1C, FEM1A, KIAA1785, fem-1 homolog c (C.elegans), feminization 1 homolog a

**Official Symbol:** FEM1C

**Accession Number(s):** NP\_064562.1

**Human GeneID(s):** [56929](#)

**Non-Human GeneID(s):** 240263 (mouse)

### Immunogen

Peptide with sequence C-HIPEKLETFLVSLHR, from the C Terminus of the protein sequence according to NP\_064562.1.

Please note the [peptide](#) is available for sale.

### Purification and Storage

Purified from goat serum by ammonium sulphate precipitation followed by antigen affinity chromatography using the immunizing peptide.

Supplied at 0.5 mg/ml in Tris saline, 0.02% sodium azide, pH7.3 with 0.5% bovine serum albumin.

Aliquot and store at -20°C. Minimize freezing and thawing.

### Applications Tested

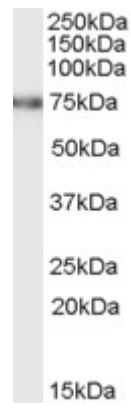
**Peptide ELISA:** antibody detection limit dilution 1:8000.

**Western blot:** Approx 75kDa band observed in heart and kidney lysates from mouse and rat (calculated MW of 68.6kDa according to mouse NP\_775599.1). Recommended concentration: 0.3-1µg/ml.

### Species Reactivity

**Tested:** Mouse, Rat

**Expected from sequence similarity:** Human, Mouse, Rat, Dog, Cow



EB05044 (0.5µg/ml) staining of rat kidney lysate (RIPA buffer, 35µg total protein per lane). Primary incubated for 1 hour. Detected by western blot using chemiluminescence.