

UK Office

Everest Biotech Ltd

Cherwell Innovation Centre
77 Heyford Park
Upper Heyford
Oxfordshire
OX25 5HD
UK

Enquiries:

info@everestbiotech.com

Sales:

sales@everestbiotech.com

Tech support:

support@everestbiotech.com

Tel: +44 (0)1869 238326

www.everestbiotech.com

**Research Use Only. Not for
diagnostic or therapeutic use.**

EB06050 - Goat Anti-FBXL12 Antibody

Size: 100µg specific antibody in 200µl



Target Protein

Principal Names: FBXL12, likely ortholog of mouse f-box and leucine-rich repeat protein 12, FLJ20188, hypothetical protein FLJ20188, F-box and leucine-rich repeat protein 12, Fbl12

Official Symbol: FBXL12

Accession Number(s): NP_060173.1

Human GeneID(s): [54850](#)

Non-Human GeneID(s): 30843 (mouse)

Immunogen

Peptide with sequence RACPKEsMDWWm, from the C Terminus of the protein sequence according to NP_060173.1.

Please note the [peptide](#) is available for sale.

Purification and Storage

Purified from goat serum by ammonium sulphate precipitation followed by antigen affinity chromatography using the immunizing peptide.

Supplied at 0.5 mg/ml in Tris saline, 0.02% sodium azide, pH7.3 with 0.5% bovine serum albumin.

Aliquot and store at -20°C. Minimize freezing and thawing.

Applications Tested

Peptide ELISA: antibody detection limit dilution 1:32000.

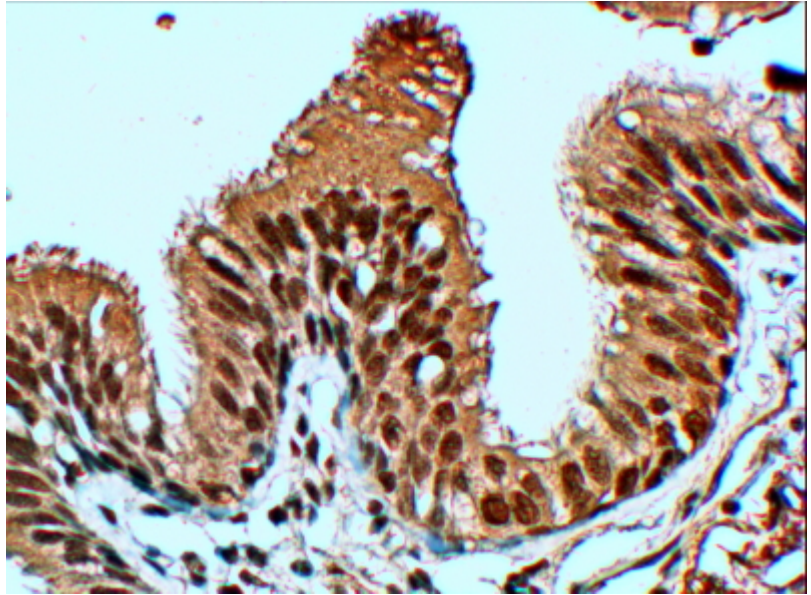
Western blot: Preliminary experiments gave no signal but low background in Human Brain lysates at up to 1µg/ml. We would appreciate any feedback from people in the field - have any results been reported with other antibodies/lysates?

IHC: In paraffin embedded Human Lung shows staining of ciliated epithelial cells in the bronchioles. Recommended concentration, 4-6µg/ml.

Species Reactivity

Tested: Human

Expected from sequence similarity: Human, Mouse, Rat, Dog



EB06050 (4µg/ml) staining of paraffin embedded Human Lung. Steamed antigen retrieval with citrate buffer pH 6, HRP-staining.