

## UK Office

### Everest Biotech Ltd

Cherwell Innovation Centre  
77 Heyford Park  
Upper Heyford  
Oxfordshire  
OX25 5HD  
UK

Enquiries:

[info@everestbiotech.com](mailto:info@everestbiotech.com)

Sales:

[sales@everestbiotech.com](mailto:sales@everestbiotech.com)

Tech support:

[support@everestbiotech.com](mailto:support@everestbiotech.com)

Tel: +44 (0)1869 238326

[www.everestbiotech.com](http://www.everestbiotech.com)

**Research Use Only. Not for  
diagnostic or therapeutic use.**

## EB07613 - Goat Anti-FAIM1 Antibody

Size: 100µg specific antibody in 200µl



### Target Protein

**Principal Names:** FAIM1, FAIM, Fas apoptotic inhibitory molecule

**Official Symbol:** FAIM

**Accession Number(s):** NP\_001028202.1; NP\_001028203.1; NP\_001028204.1;  
NP\_060617.1

**Human GeneID(s):** [55179](#)

**Non-Human GeneID(s):** 23873 (mouse), 140930 (rat)

**Important Comments:** This antibody is expected to recognise all reported isoforms  
(NP\_001028202.1; NP\_001028203.1; NP\_001028204.1; NP\_060617.1).

### Immunogen

Peptide with sequence C-KKYMEDRSKTTN, from the internal region of the protein  
sequence according to NP\_001028202.1; NP\_001028203.1; NP\_001028204.1;  
NP\_060617.1.

Please note the [peptide](#) is available for sale.

### Purification and Storage

Purified from goat serum by ammonium sulphate precipitation followed by antigen affinity  
chromatography using the immunizing peptide.

Supplied at 0.5 mg/ml in Tris saline, 0.02% sodium azide, pH7.3 with 0.5% bovine serum  
albumin.

Aliquot and store at -20°C. Minimize freezing and thawing.

### Applications Tested

**Peptide ELISA:** antibody detection limit dilution 1:32000.

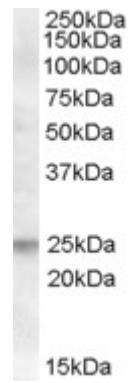
**Western blot:** Approx 25kDa band observed in Human Lymph Node lysates (calculated  
MW of 24.0kDa according to NP\_001028202.1). Recommended concentration:  
0.5-1µg/ml.

**IHC:** In paraffin embedded Human Placenta shows cytoplasm staining of trophoblasts.  
Recommended concentration, 2-3µg/ml.

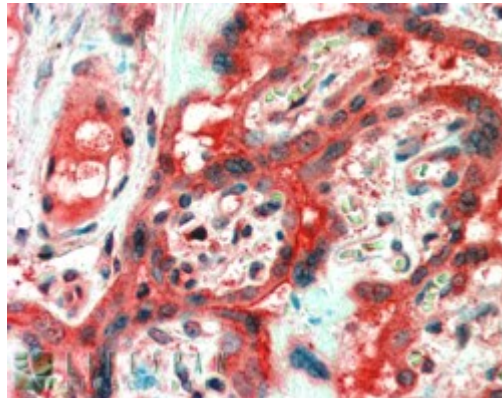
### Species Reactivity

**Tested:** Human

**Expected from sequence similarity:** Human, Mouse, Rat, Dog



EB07613 (0.5 $\mu$ g/ml) staining of Human Lymph Node lysate (35 $\mu$ g protein in RIPA buffer). Primary incubation was 1 hour. Detected by chemiluminescence.



EB07613 (2.5 $\mu$ g/ml) staining of paraffin embedded Human Placenta. Steamed antigen retrieval with citrate buffer pH 6, AP-staining.