

## UK Office

### Everest Biotech Ltd

Cherwell Innovation Centre  
77 Heyford Park  
Upper Heyford  
Oxfordshire  
OX25 5HD  
UK

Enquiries:

[info@everestbiotech.com](mailto:info@everestbiotech.com)

Sales:

[sales@everestbiotech.com](mailto:sales@everestbiotech.com)

Tech support:

[support@everestbiotech.com](mailto:support@everestbiotech.com)

Tel: +44 (0)1869 238326

[www.everestbiotech.com](http://www.everestbiotech.com)

**Research Use Only. Not for  
diagnostic or therapeutic use.**

## EB09908 - Goat Anti-EVI1 / AML1 Antibody

Size: 100µg specific antibody in 200µl



### Target Protein

**Principal Names:** AML1-EVI-1, AML1-EVI-1 fusion protein, ecotropic viral integration site 1, EVI1, MDS1, MDS1 and EVI1 complex locus, MDS1-EVI1, MGC163392, MGC97004, myelodysplasia syndrome 1, myelodysplasia syndrome-associated protein 1, oncogene EVI1, PRDM3, MECOM

**Official Symbol:** MECOM

**Accession Number(s):** NP\_001098547.3; NP\_005232.2; NP\_004982.2;  
NP\_001157471.1; NP\_001157472.1

**Human GenelD(s):** [2122](#)

**Non-Human GenelD(s):** 14013 (mouse)

**Important Comments:** This antibody is expected to recognize all reported isoforms (NP\_001098547.3; NP\_005232.2; NP\_004982.2; NP\_001157471.1; NP\_001157472.1). Reported variants represent identical protein: NP\_001098548.2, NP\_005232.2

### Immunogen

Peptide with sequence C-DKESLHSTSH, from the internal region of the protein sequence according to NP\_001098547.3; NP\_005232.2; NP\_004982.2; NP\_001157471.1; NP\_001157472.1.

Please note the [peptide](#) is available for sale.

### Purification and Storage

Purified from goat serum by ammonium sulphate precipitation followed by antigen affinity chromatography using the immunizing peptide.

Supplied at 0.5 mg/ml in Tris saline, 0.02% sodium azide, pH7.3 with 0.5% bovine serum albumin.

Aliquot and store at -20°C. Minimize freezing and thawing.

### Applications Tested

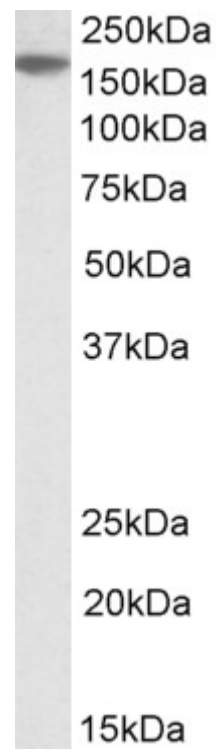
**Peptide ELISA:** antibody detection limit dilution 1:16000.

**Western blot:** Approx 170kDa band observed in lysates of cell lines A549 and HepG2 (calculated MW of 126kDa according to NP\_001098547.3). The observed molecular weight corresponds to earlier findings with different antibodies from other commercial sources. Recommended concentration: 1-3µg/ml.

### Species Reactivity

**Tested:** Human

**Expected from sequence similarity:** Human



EB09908 (2 $\mu$ g/ml) staining of A549 lysate (35 $\mu$ g protein in RIPA buffer). Primary incubation was 1 hour.  
Detected by chemiluminescence.