

## UK Office

### Everest Biotech Ltd

Cherwell Innovation Centre  
77 Heyford Park  
Upper Heyford  
Oxfordshire  
OX25 5HD  
UK

Enquiries:

[info@everestbiotech.com](mailto:info@everestbiotech.com)

Sales:

[sales@everestbiotech.com](mailto:sales@everestbiotech.com)

Tech support:

[support@everestbiotech.com](mailto:support@everestbiotech.com)

Tel: +44 (0)1869 238326

[www.everestbiotech.com](http://www.everestbiotech.com)

**Research Use Only. Not for  
diagnostic or therapeutic use.**

## EB09259 - Goat Anti-ETF-4 / TEAD2 Antibody

Size: 100µg specific antibody in 200µl



### Target Protein

**Principal Names:** TEAD2, TEA domain family member 2, ETF, TEF-4, TEF4

**Official Symbol:** TEAD2

**Accession Number(s):** NP\_003589.1

**Human GeneID(s):** [8463](#)

**Non-Human GeneID(s):** 21677 (mouse), 294299 (rat)

**Important Comments:** This antibody is not expected to cross-react with other TEAD proteins.

### Immunogen

Peptide with sequence C-EPPDAVDSYQRH, from the internal region of the protein sequence according to NP\_003589.1.

Please note the [peptide](#) is available for sale.

### Purification and Storage

Purified from goat serum by ammonium sulphate precipitation followed by antigen affinity chromatography using the immunizing peptide.

Supplied at 0.5 mg/ml in Tris saline, 0.02% sodium azide, pH7.3 with 0.5% bovine serum albumin.

Aliquot and store at -20°C. Minimize freezing and thawing.

### Applications Tested

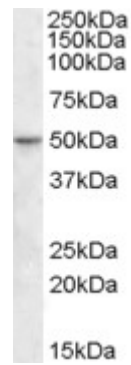
**Peptide ELISA:** antibody detection limit dilution 1:64000.

**Western blot:** Approx. 50kDa band observed in Human Colon and Ileum lysates (calculated MW of 49.2kDa according to NP\_003589.1). Recommended concentration: 1-3µg/ml. Primary incubation was 1 hour.

### Species Reactivity

**Tested:** Human

**Expected from sequence similarity:** Human, Mouse, Rat, Dog, Cow



EB09259 (1 $\mu$ g/ml) staining of Human Ileum lysate (35 $\mu$ g protein in RIPA buffer). Detected by chemiluminescence.



EB09259 (1 $\mu$ g/ml) staining of Human Colon lysate (35 $\mu$ g protein in RIPA buffer). Detected by chemiluminescence.