

## UK Office

### Everest Biotech Ltd

Cherwell Innovation Centre  
77 Heyford Park  
Upper Heyford  
Oxfordshire  
OX25 5HD  
UK

Enquiries:

[info@everestbiotech.com](mailto:info@everestbiotech.com)

Sales:

[sales@everestbiotech.com](mailto:sales@everestbiotech.com)

Tech support:

[support@everestbiotech.com](mailto:support@everestbiotech.com)

Tel: +44 (0)1869 238326

[www.everestbiotech.com](http://www.everestbiotech.com)

**Research Use Only. Not for  
diagnostic or therapeutic use.**

## EB08367 - Goat Anti-ESRRG Antibody

Size: 100µg specific antibody in 200µl



### Target Protein

**Principal Names:** ESRRG, DKFZp781L1617, Estrogen-related receptor gamma, ERR3, FLJ16023, KIAA0832, NR3B3

**Official Symbol:** ESRRG

**Accession Number(s):** NP\_001429.2; NP\_996317.1; NP\_996318.1

**Human GeneID(s):** [2104](#)

**Non-Human GeneID(s):** 26381 (mouse)

**Important Comments:** This antibody is expected to recognise the reported isoform NP\_001429.2.

### Immunogen

Peptide with sequence CRMSNKDRHIDS, from the internal region of the protein sequence according to NP\_001429.2; NP\_996317.1; NP\_996318.1.

Please note the [peptide](#) is available for sale.

### Purification and Storage

Purified from goat serum by ammonium sulphate precipitation followed by antigen affinity chromatography using the immunizing peptide.

Supplied at 0.5 mg/ml in Tris saline, 0.02% sodium azide, pH7.3 with 0.5% bovine serum albumin.

Aliquot and store at -20°C. Minimize freezing and thawing.

### Applications Tested

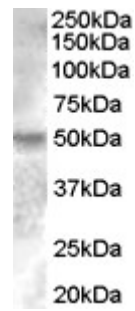
**Peptide ELISA:** antibody detection limit dilution 1:16000.

**Western blot:** Approx. 50kDa band observed in Human Brain (Cerebellum) and Breast lysates (calculated MW of 51.3kDa according to NP\_NP\_001429.2). In transfected HEK293 transiently expressing ESRRG a band of approx. 52kDa is observed. This band is not observed in the non-transfected HEK293. Recommended concentration: 0.2-0.6µg/ml.

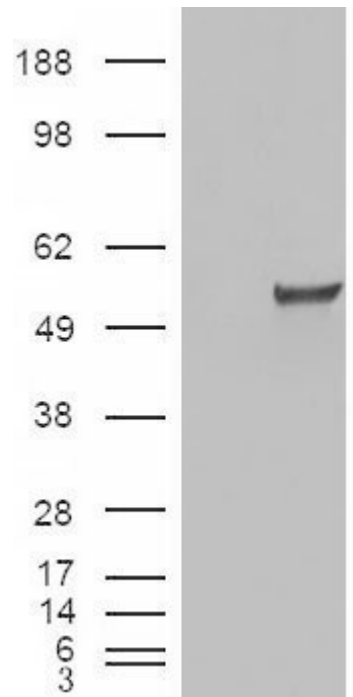
### Species Reactivity

**Tested:** Human

**Expected from sequence similarity:** Human, Mouse, Dog



EB08367 (0.2 $\mu$ g/ml) staining of Human Breast lysate (35 $\mu$ g protein in RIPA buffer). Primary incubation was 1 hour. Detected by chemiluminescence.



HEK293 overexpressing ESRRG (RC218233) and probed with EB08367 (mock transfection in first lane), tested by Origene.