



## UK Office

### Everest Biotech Ltd

Cherwell Innovation Centre  
77 Heyford Park  
Upper Heyford  
Oxfordshire  
OX25 5HD  
UK

Enquiries:

[info@everestbiotech.com](mailto:info@everestbiotech.com)

Sales:

[sales@everestbiotech.com](mailto:sales@everestbiotech.com)

Tech support:

[support@everestbiotech.com](mailto:support@everestbiotech.com)

Tel: +44 (0)1869 238326

[www.everestbiotech.com](http://www.everestbiotech.com)

**Research Use Only. Not for  
diagnostic or therapeutic use.**

## EB08135 - Goat Anti-EPB41L2 / 4.1G (aa 593 to 604) Antibody

Size: 100µg specific antibody in 200µl



### Target Protein

**Principal Names:** EPB41L2, 4.1-G, erythrocyte membrane protein band 4.1-like 2, RP3-324N14.1, DKFZp781D1972, DKFZp781H1755, OTTHUMP00000040262, erythrocyte membrane protein band 4.1 like-protein 2

**Official Symbol:** EPB41L2

**Accession Number(s):** NP\_001422.1

**Human GeneID(s):** [2037](#)

### Immunogen

Peptide with sequence C-RREVRSPKAPH, from the internal region of the protein sequence according to NP\_001422.1.

Please note the [peptide](#) is available for sale.

### Purification and Storage

Purified from goat serum by ammonium sulphate precipitation followed by antigen affinity chromatography using the immunizing peptide.

Supplied at 0.5 mg/ml in Tris saline, 0.02% sodium azide, pH7.3 with 0.5% bovine serum albumin.

Aliquot and store at -20°C. Minimize freezing and thawing.

### Applications Tested

**Peptide ELISA:** antibody detection limit dilution 1:32000.

**Western blot:** Approx 110kDa band observed in Human Brain (Cerebellum) lysates (calculated MW of 113kDa according to NP\_001422.1). Recommended concentration: 0.03-0.1µg/ml. An additional double band of unknown identity was also consistently observed at 38-40kDa. This band was successfully blocked by incubation with the immunising peptide. We would appreciate any feedback from people in the field - have any such results been reported with other antibodies/lysates? Have any further splice variants/modified forms been reported?

**IHC:** In paraffin embedded Human Uterus shows membranous staining of the endometrial cells. Recommended concentration, 3-5µg/ml.

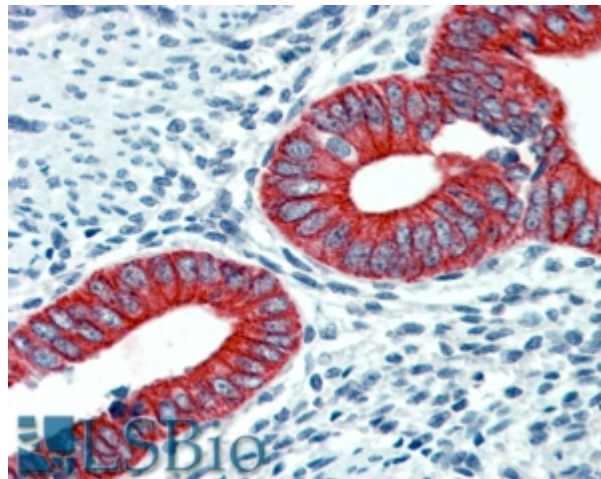
### Species Reactivity

**Tested:** Human

**Expected from sequence similarity:** Human



EB08135 (0.1µg/ml) staining of Human Brain (Cerebellum) lysate (35µg protein in RIPA buffer) with (B) and without (A) blocking with the immunising peptide. Primary incubation was 1 hour. Detected by chemiluminescence.



EB08135 (2.5µg/ml) staining of paraffin embedded Human Uterus. Steamed antigen retrieval with citrate buffer pH 6, AP-staining.