

UK Office

Everest Biotech Ltd

Cherwell Innovation Centre
77 Heyford Park
Upper Heyford
Oxfordshire
OX25 5HD
UK

Enquiries:

info@everestbiotech.com

Sales:

sales@everestbiotech.com

Tech support:

support@everestbiotech.com

Tel: +44 (0)1869 238326

www.everestbiotech.com

**Research Use Only. Not for
diagnostic or therapeutic use.**

EB08973 - Goat Anti-ENT1 Antibody

Size: 100µg specific antibody in 200µl



Target Protein

Principal Names: SLC29A1, solute carrier family 29 (nucleoside transporters), member 1, ENT1, MGC1465, MGC3778, equilibrative nitrobenzylmercaptopurine riboside (NBMPR)-sensitive nucleoside transporter, equilibrative nucleoside transporter 1, nucleoside transporter, es-type, solute carrier family 29, member 1

Official Symbol: SLC29A1

Accession Number(s): NP_001071643.1

Human GeneID(s): [2030](#)

Important Comments: Reported variants represent identical protein: NP_001071642.1, NP_001071645.1, NP_001071644.1, NP_004946.1, NP_001071643.1

Immunogen

Peptide with sequence TSHQPQDRYKAVW-C, from the N Terminus of the protein sequence according to NP_001071643.1.

Please note the [peptide](#) is available for sale.

Purification and Storage

Purified from goat serum by ammonium sulphate precipitation followed by antigen affinity chromatography using the immunizing peptide.

Supplied at 0.5 mg/ml in Tris saline, 0.02% sodium azide, pH7.3 with 0.5% bovine serum albumin.

Aliquot and store at -20°C. Minimize freezing and thawing.

Applications Tested

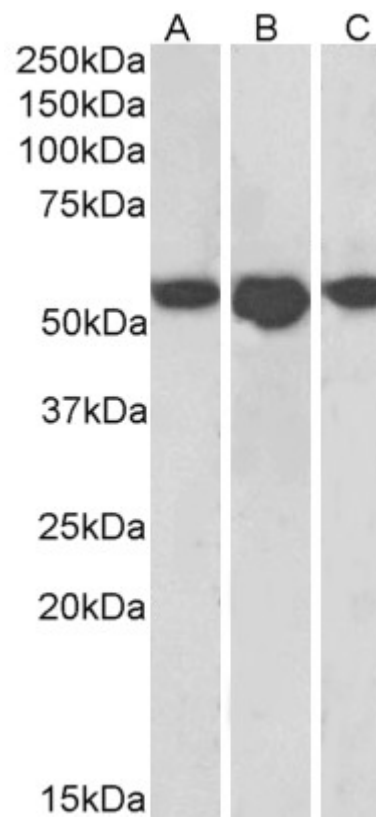
Peptide ELISA: antibody detection limit dilution 1:4000.

Western blot: Approx 55kDa band observed in Human Breast, Spleen and Placenta lysates (calculated MW of 50.2kDa according to NP_001071643.1). Recommended concentration: 1-3µg/ml.

Species Reactivity

Tested: Human

Expected from sequence similarity: Human, Mouse, Rat, Dog, Cow



EB08973 (1 μ g/ml) staining of Human Breast (A), Placenta (B) and Spleen (C) lysates (35 μ g protein in RIPA buffer). Primary incubation was 1 hour. Detected by chemiluminescence.